

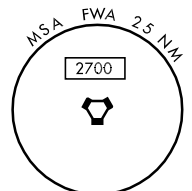
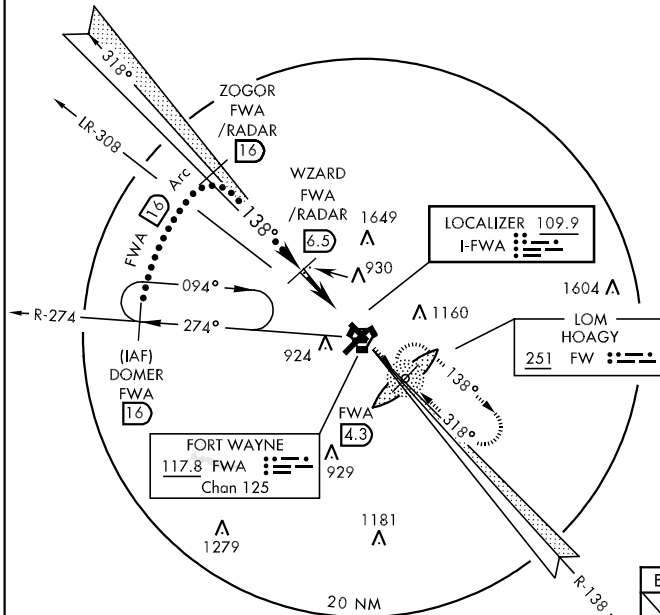
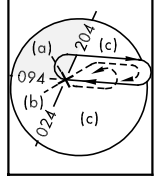
LOC I-FWA <b>109.9</b>	APCH CRS <b>138°</b>	Rwy Idg TDZE Arpt Elev <b>8001</b> <b>802</b> <b>814</b>	JAL-156 [USAF]	FORT WAYNE INTL (KFWA)
---------------------------	-------------------------	---	----------------	------------------------

**MISSED APPROACH:** Climb to 3000 via I-FWA SE course to HOAGY LOM/FWA 4.3 DME and hold, continue climb-in-hold to 3000 (ADF or DME or RADAR REQUIRED).

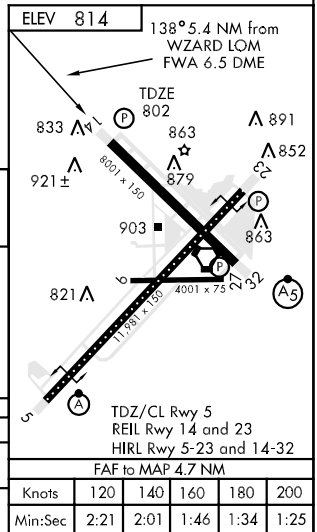
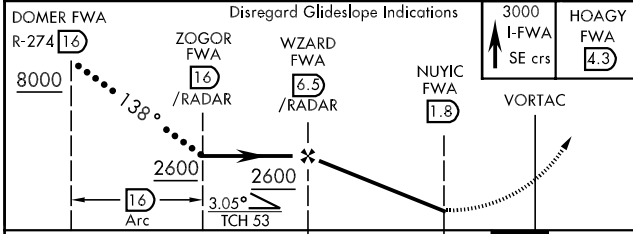
ATIS <b>121.25 349.0</b>	FORT WAYNE APP CON <b>127.2 284.6</b>	FORT WAYNE TOWER <b>119.1 272.725</b>	GND CON <b>121.9 348.6</b>	CLNC DEL <b>124.75</b>	ASR
-----------------------------	--	--	-------------------------------	---------------------------	-----

**BACK COURSE**  
**DME or RADAR REQUIRED**

1879



EMERG SAFE ALT 100 NM 3100



CATEGORY	Disregard Glideslope Indications		
	C	D	E
S-14	1220-1¼	418 (500-1¼)	1220-1½ 418 (500-1½)
CIRCLING	1300-1½ 486 (500-1½)	1380-2 566 (600-2)	1520-2½ 706 (800-2½)

FAF to MAP 4.7 NM					
Knots	120	140	160	180	200
Min:Sec	2:21	2:01	1:46	1:34	1:25

EC-2, 22 OCT 2009 to 19 NOV 2009

EC-2, 22 OCT 2009 to 19 NOV 2009