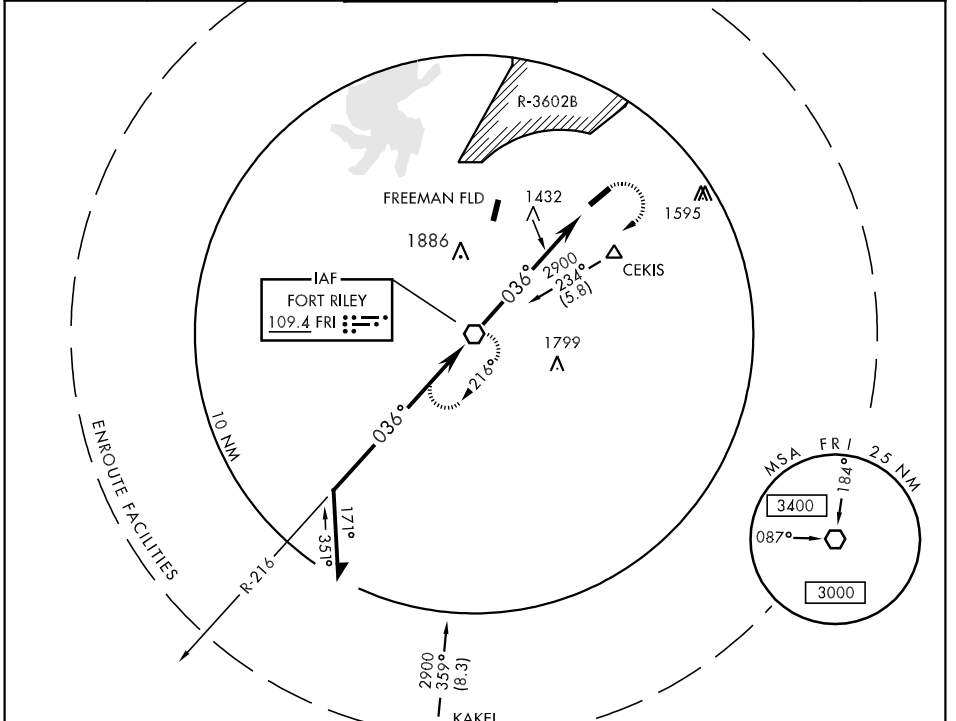


VOR FRI 109.4	APCH CRS 036°	Rwy Idg TDZE Arpt Elev 4503 1065 1065	AL-155 [USA]	MARSHALL AAF (KFRI)
-------------------------	-------------------------	---	--------------	---------------------

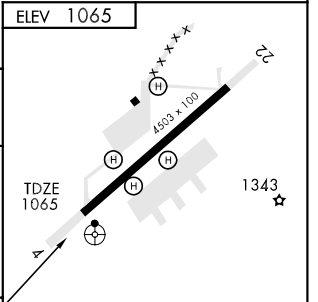
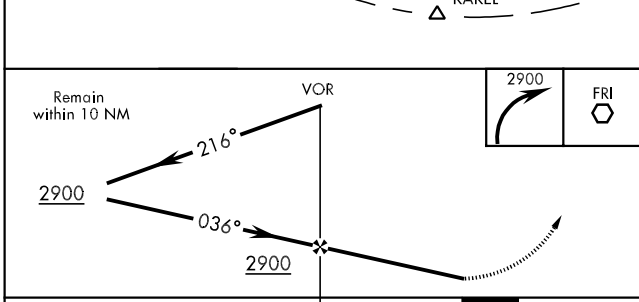
<p>Visibility reduction by helicopters NA * Circling not authorized NW of Rwy 4-22.</p>	<p>MISSED APPROACH: Climbing right turn to 2900 direct FRI VOR and hold.</p>
---	--

ATIS ★ 121.025	KANSAS CITY CENTER 127.35 257.975	MARSHALL TOWER ★ 126.2 (CTAF) 0 248.65	GND CON 140.20 229.4	CLNC DEL 119.65	ASR/PAR
--------------------------	---	--	--------------------------------	---------------------------	---------



NC-2, 22 OCT 2009 to 19 NOV 2009

NC-2, 22 OCT 2009 to 19 NOV 2009



CATEGORY	A	B	C	D
S-4	1700-1 635 (700-1)		1700-1¾ 635 (700-1¾)	1700-2 635 (700-2)
CIRCLING *	1700-1 635 (700-1)		1700-1¾ 635 (700-1¾)	1760-2¼ 755 (800-2¼)
S-PAR-4	1265-¾	200 (200-¾)	GS 3.00°	

036° 6.3 NM from VOR
HIRL Rwy 4-22

FAF to MAP 6.3 NM					
Knots	60	90	120	150	180
Min:Sec	6:18	4:12	3:09	2:31	2:06