

FORT RILEY, KANSAS

RNAV (GPS) RWY 4

APCH CRS 044°	Rwy Idg 4503
	TDZE 1065
	Arpt Elev 1065

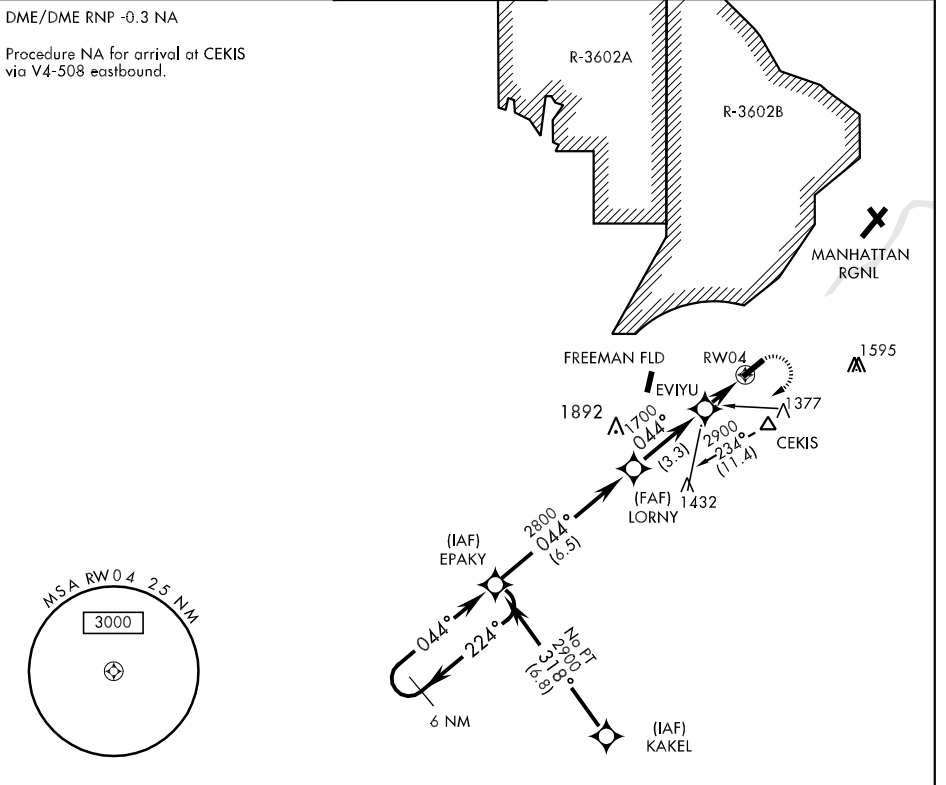
AL-155 [USA]

MARSHALL AAF (KFRI)

∇ * Circling not authorized NW of Rwy 4-22.	MISSED APPROACH: Climbing right turn to 2900 direct EPAKY and hold.				
▲ NA Visibility reduction by helicopters NA					
ATIS ★ 121.025	KANSAS CITY CENTER 127.35 257.975	MARSHALL TOWER ★ 126.2 (CTAF) 0 248.65	GND CON 140.20 229.4	CLNC DEL 119.65	ASR/PAR

DME/DME RNP -0.3 NA

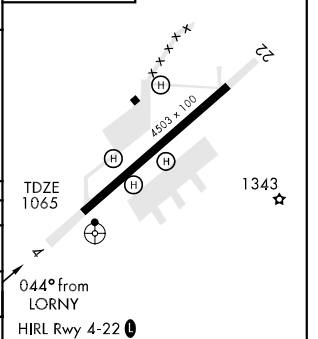
Procedure NA for arrival at CEKIS via V4-508 eastbound.



NC-2, 22 OCT 2009 to 19 NOV 2009

NC-2, 22 OCT 2009 to 19 NOV 2009

	EPAKY	LORNY	EVIYU	RW04	EPAKY	ELEV 1065
	2900 ← 224°	← 044°	← 044°	← 044°	← 044°	
	3.05° TCH 40	2800	1700			
		← 3.3 NM	← 1.9 NM			
CATEGORY	A	B	C	D		
LNAV MDA	1640-1	575 (600-1)	1640-1½ 575 (600-1½)	1640-1¾ 575 (600-1¾)		
CIRCLING *	1660-1 595 (600-1)	1680-1 615 (700-1)	1680-1¾ 615 (700-1¾)	1760-2¼ 695 (700-2¼)		
S-PAR-4	1265-¾	200 (200-¾)	GS 3.00°			



FORT RILEY, KANSAS

39° 03' N - 96° 46' W

MARSHALL AAF (KFRI)

Orig 08213

RNAV (GPS) RWY 4