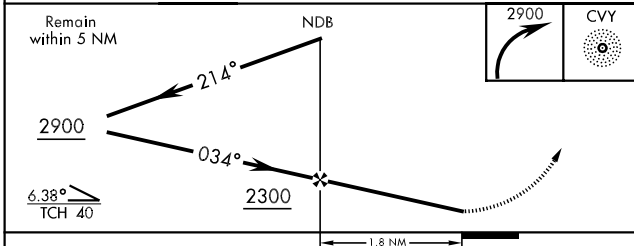
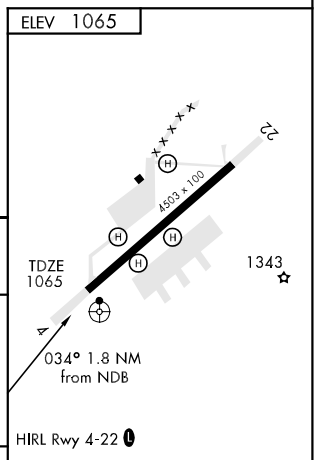
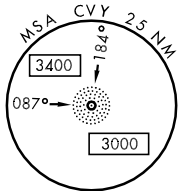
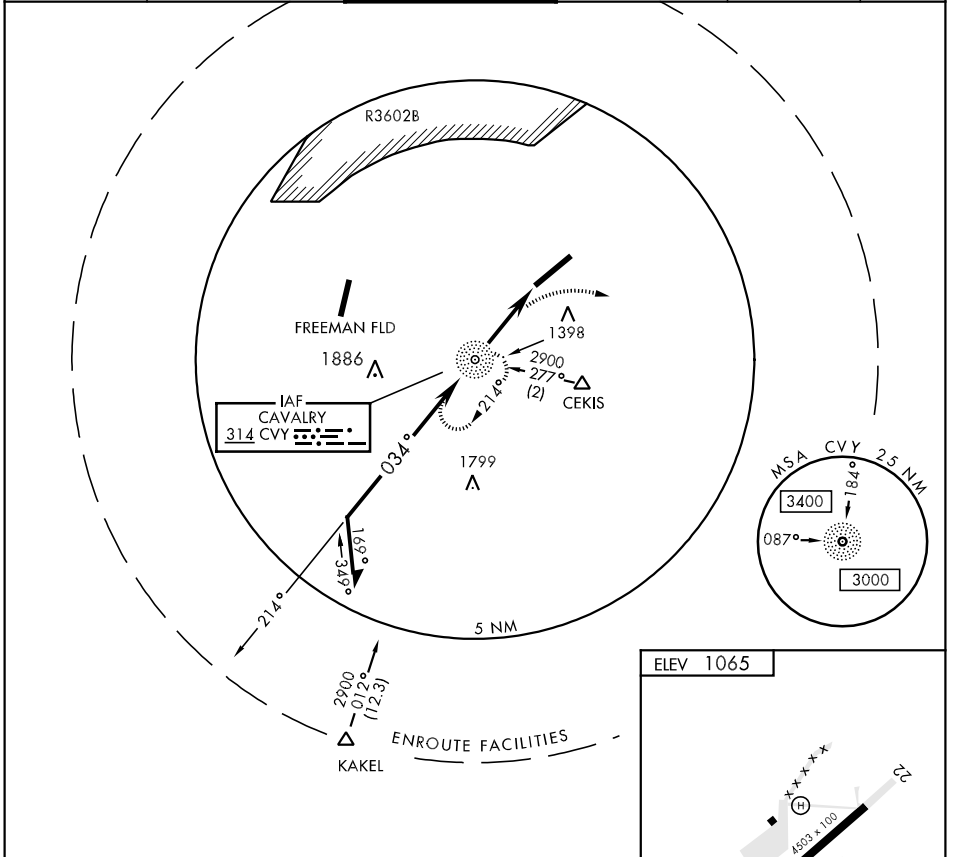


NDB CVY 314	APCH CRS 034°	Rwy Idg TDZE Arpt Elev 4503 1065 1065	AL-155 [USA]	MARSHALL AAF (KFRI)
-----------------------	-------------------------	---	--------------	---------------------

<p>Visibility reduction by helicopters NA</p>	<p>MISSED APPROACH: Climbing right turn to 2900 direct CVY NDB and hold.</p>
---	--

ATIS ★ 121.025	KANSAS CITY CENTER 127.35 257.975	MARSHALL TOWER ★ 126.2 (CTAF) 0 248.65	GND CON 140.20 229.4	CLNC DEL 119.65	ASR/PAR
--------------------------	---	--	--------------------------------	---------------------------	---------



CATEGORY	COPTER			FAF to MAP 1.8 NM						
	1640-1	575	(600-1)	Knots	45	60	75	90	105	
S-PAR-4	1265-¾	200	(200-¾)	GS 3.00°	Min:Sec	2:24	1:48	1:26	1:12	1:02

NC-2, 22 OCT 2009 to 19 NOV 2009

NC-2, 22 OCT 2009 to 19 NOV 2009