

# SHFTY ONE ARRIVAL (RNAV) ST-154 (FAA)

FORT MYERS, FLORIDA

NOTE: AMG and DUNKN Transitions to PONTY or TIOFF: For non-GPS equipped aircraft, LBV and RSW must be operational.

FORT MYERS APP CON ★  
125.15 306.2  
PAGE FIELD ATIS  
123.725  
SOUTHWEST FLORIDA ATIS ★  
124.65

ALMA TRANSITION (AMG.SHFTY1):  
DUNKN TRANSITION (DUNKN.SHFTY1):  
HIBAC TRANSITION (HIBAC.SHFTY1):

From over SHFTY via 183° track to WRTRS, then via 161° track to MAZZY, then via 161° track to MOEMO, thence....

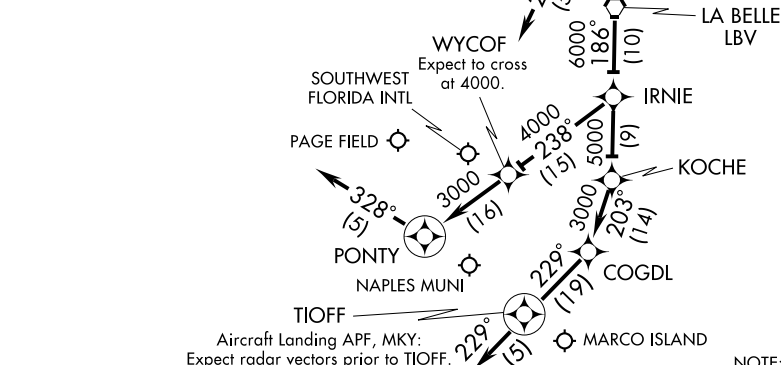
Landing RSW Rwy 6: From over MOEMO via 160° track to LBV VORTAC, then via 186° track to IRNIE, then via 238° track to WYCOF, then via 238° track to PONTY, then via 328° heading. Expect radar vectors.

Landing RSW Rwy 24 and FMY: From over MOEMO via 220° heading. Expect radar vectors.

Landing APF and MKY: From over MOEMO via 160° track to LBV VORTAC, then via 186° track to IRNIE, then via 186° track to KOCH, then via 203° track to COGDL, then via 229° track to TIOFF, then via 229° heading. Expect radar vectors.

NOTE: RNAV 1.  
NOTE: RADAR Required.  
NOTE: DME/DME/IRU or GPS Required.  
NOTE: Turbojet/Turboprop aircraft only.

MOEMO  
RSW Landing Rwy 6:  
Expect to cross at 10000.  
RSW Landing Rwy 24: Expect to cross at 10000 and 250 KIAS.



# SHFTY ONE ARRIVAL (RNAV)

FORT MYERS, FLORIDA

SE-3, 22 OCT 2009 to 19 NOV 2009

SE-3, 22 OCT 2009 to 19 NOV 2009