

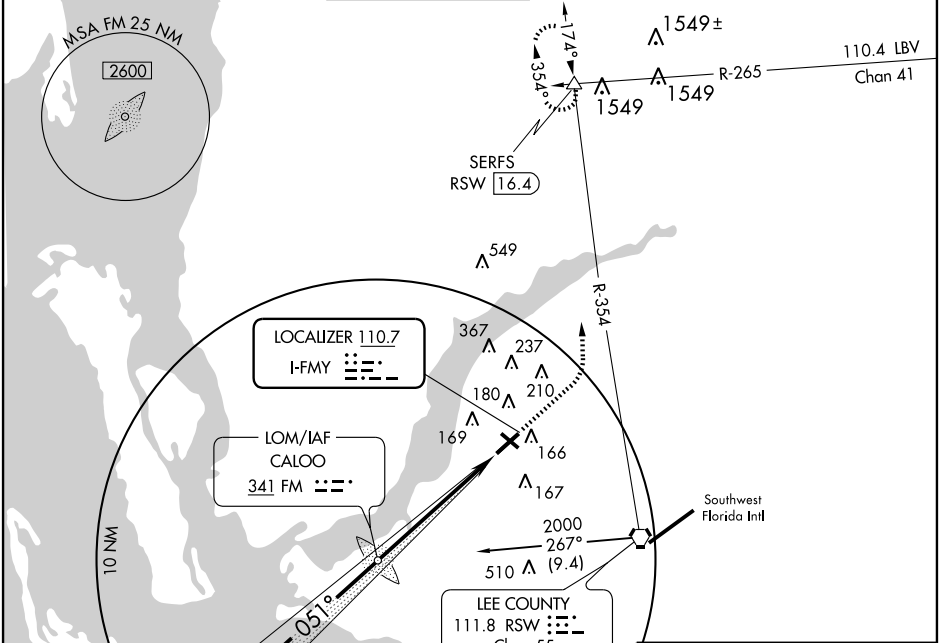
# ILS RWY 5

FORT MYERS / PAGE FIELD (FMY)

LOC I-FMY <b>110.7</b>	APP CRS <b>051°</b>	Rwy Ldg <b>5947</b> TDZE <b>15</b> Apt Elev <b>17</b>
---------------------------	------------------------	---

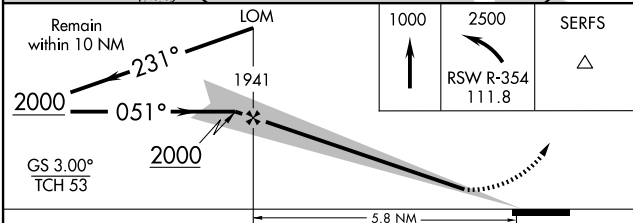
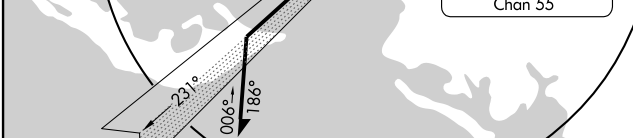
**⚠** Inoperative table does not apply. MISSED APPROACH: Climb to 1000 then climbing left turn to 2500 via RSW R-354 to SERFS Int/RSW 16.4 DME and hold.

ATIS <b>123.725</b>	FORT MYERS APP CON ★ <b>126.8 385.45</b>	PAGE TOWER ★ <b>119.0 (CTAF) 306.95</b>	GND CON <b>121.7</b>	CLNC DEL <b>121.7</b>	UNICOM <b>130.55</b>
------------------------	---	--	-------------------------	--------------------------	-------------------------

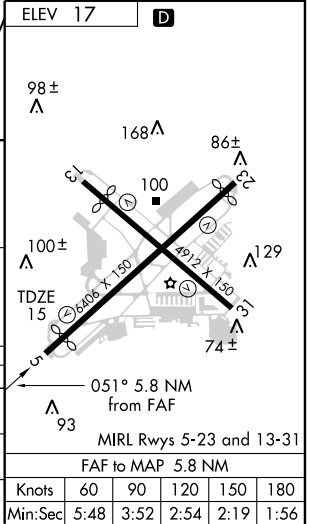


SE-3, 22 OCT 2009 to 19 NOV 2009

SE-3, 22 OCT 2009 to 19 NOV 2009



CATEGORY	A	B	C	D
S-ILS 5	265-1 250 (300-1)			
S-LOC 5	440-1	425 (500-1)	440-1¼	425 (500-1¼)
CIRCLING	540-1	523 (600-1)	540-1½	600-2 583 (600-2)



Knots	60	90	120	150	180
Min:Sec	5:48	3:52	2:54	2:19	1:56