

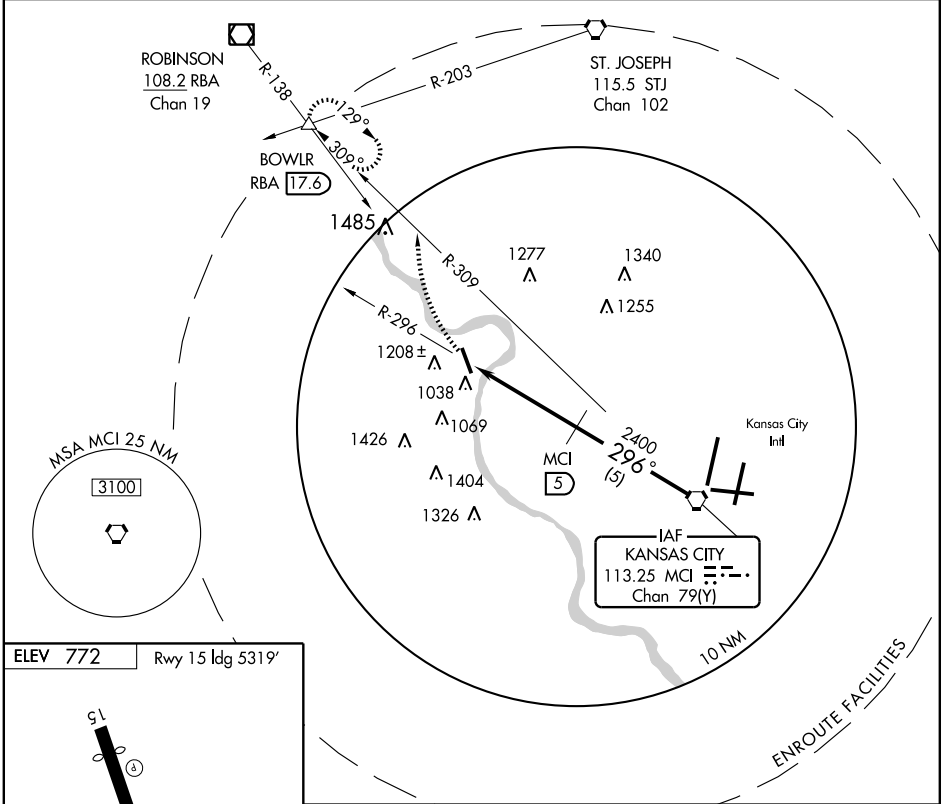
VORTAC MCI 113.25 Chan 79(Y)	APP CRS 296°	Rwy Idg TDZE Apt Elev	N/A N/A 772
--	------------------------	-----------------------------	--

Use Kansas City Intl altimeter setting.
Circling NA West of Rwy 15-33

MISSED APPROACH: Climbing right turn to 3000 via heading 340° and MCI R-309 to BOWLR Int and hold.

KANSAS CITY APP CON
124.7 318.1

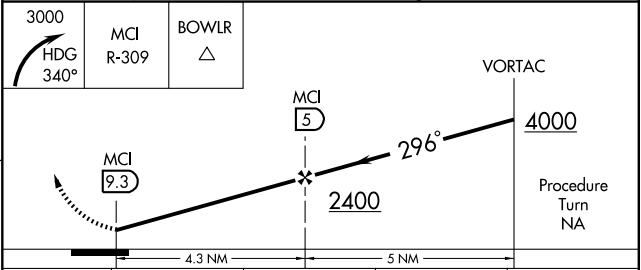
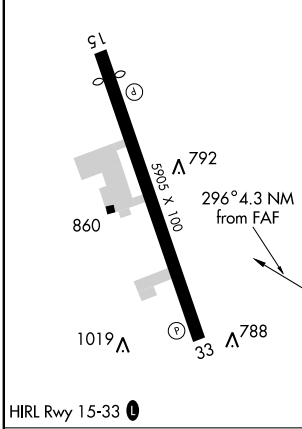
CTAF
126.2 0 *



NC-2, 22 OCT 2009 to 19 NOV 2009

NC-2, 22 OCT 2009 to 19 NOV 2009

ELEV 772 Rwy 15 ldg 5319'



Knots	60	90	120	150	180
Min:Sec					

CATEGORY	KANSAS CITY INTL ALTIMETER SETTING MINIMUMS			
	A	B	C	D
CIRCLING	1440-1	668 (700-1)	1440-1¾ 668 (700-1¾)	1500-2¼ 728 (800-2¼)