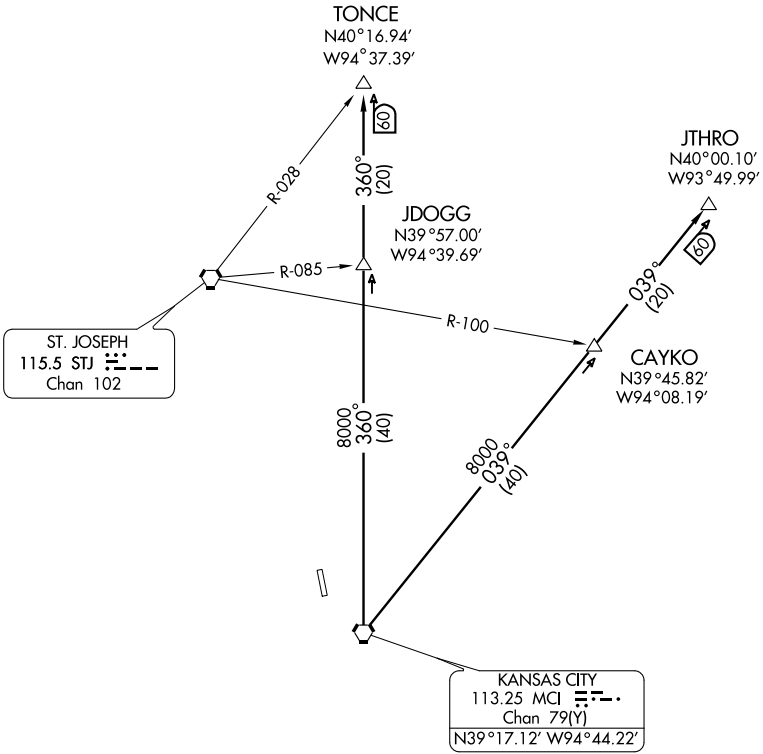


KANSAS CITY DEP CON
 124.7 318.1



NC-2, 22 OCT 2009 to 19 NOV 2009

NC-2, 22 OCT 2009 to 19 NOV 2009

NOTE: Chart not to scale

DEPARTURE ROUTE DESCRIPTION

Fly assigned heading and altitude for vector to appropriate route. Expect filed altitude 10 minutes after departure.

JTHRO TRANSITION (ROYAL3.JTHRO): From over MCI VORTAC via MCI R-039 to JTHRO INT.

TONCE TRANSITION (ROYAL3.TONCE): From over MCI VORTAC via MCI R-360 to TONCE INT.