

RNAV (GPS) RWY 33

SHERMAN AAF (FLV)

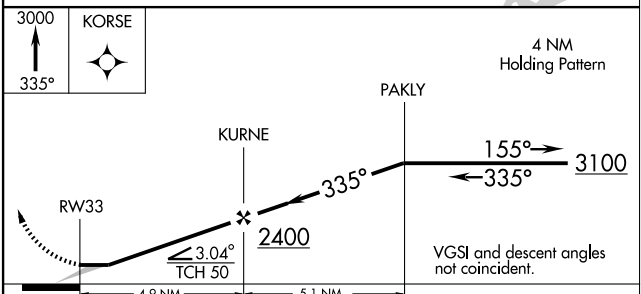
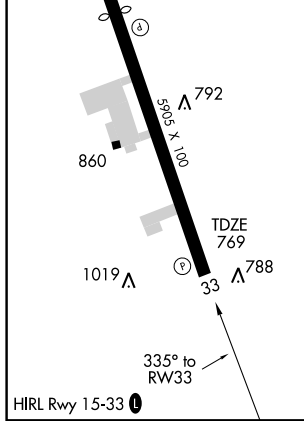
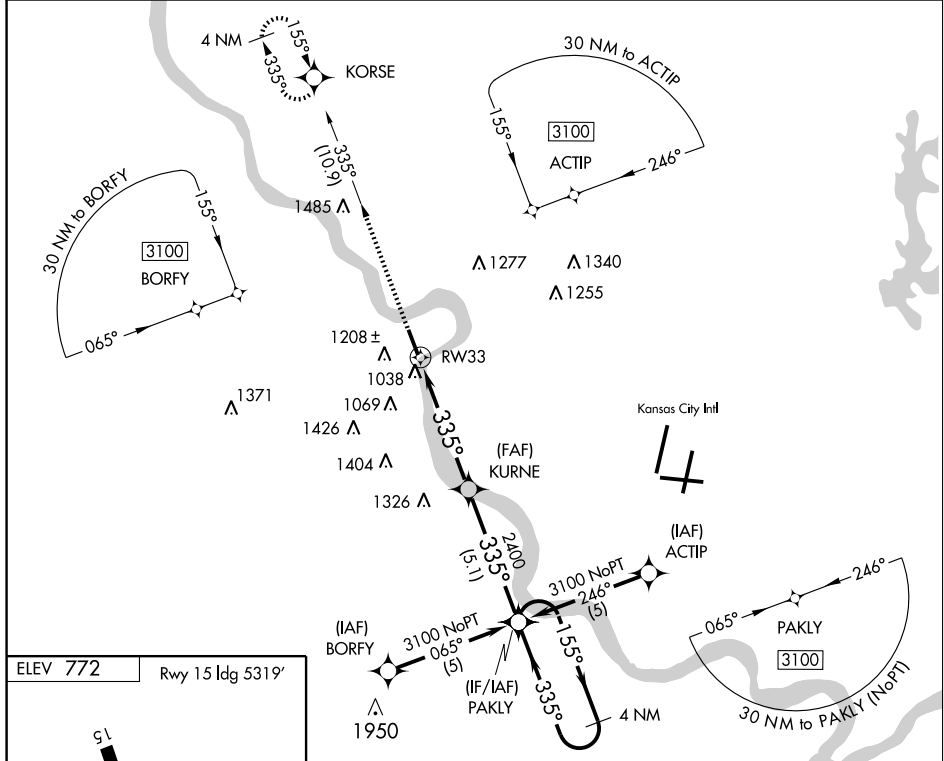
APP CRS 335°	Rwy ldg TDZE Apt Elev	5905 769 772
------------------------	-----------------------------	---

NA DME/DME RNP-0.3 NA. Use Kansas City Intl altimeter setting. Circling not authorized west of Rwy 15-33.

MISSED APPROACH: Climb to 3000 via 335° course to KORSE WP and hold.

KANSAS CITY APP CON **124.7 318.1**

CTAF **126.2 0 ***



CATEGORY	A	B	C	D
LNAV MDA	1560-1 791 (800-1)	1560-1¼ 791 (800-1¼)	1560-2¼ 791 (800-2¼)	NA
CIRCLING	1560-1 788 (800-1)	1560-1¼ 788 (800-1¼)	1560-2¼ 788 (800-2¼)	NA

NC-2, 22 OCT 2009 to 19 NOV 2009

NC-2, 22 OCT 2009 to 19 NOV 2009