

RNAV (GPS) RWY 15

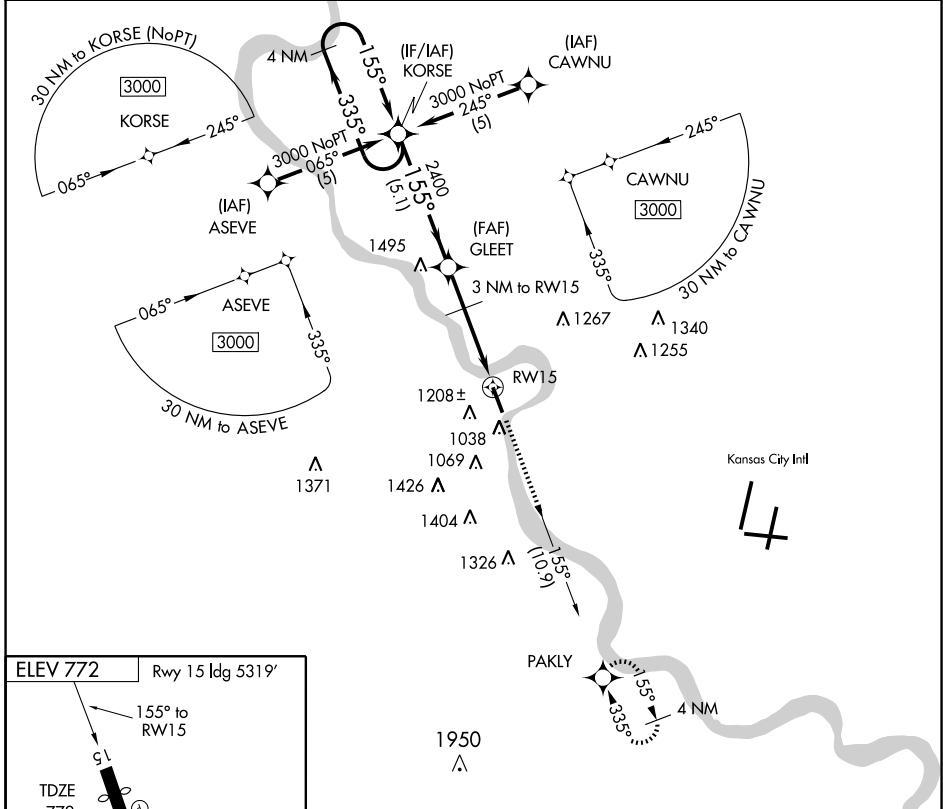
SHERMAN AAF (FLV)

APP CRS 155°	Rwy Idg 5319
	TDZE 772
	Apt Elev 772

NA DME/DME RNP-0.3 NA. Use Kansas City Intl altimeter setting. Circling not authorized west of Rwy 15-33.

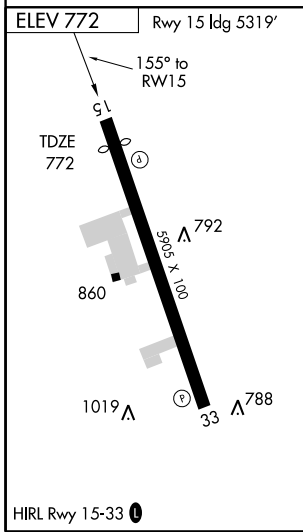
MISSED APPROACH: Climb to 3100 via 155° course to PAKLY WP and hold.

KANSAS CITY APP CON **124.7 318.1** CTAF **126.2 0 ***



NC-2, 22 OCT 2009 to 19 NOV 2009

NC-2, 22 OCT 2009 to 19 NOV 2009



	4 NM Holding Pattern	KORSE	GLEET	3100	PAKLY
				↑ 155°	✧
	3000 ← 335°	→ 155°	→ 155°	3.04° TCH 50	3 NM to RWY 15
			2400	1780	RWY 15
		5.1 NM	1.9 NM	3 NM	
VGSI and descent angles not coincident.					
CATEGORY	A	B	C	D	
LNAV MDA	1520-1 748 (800-1)	1520-1¼ 748 (800-1¼)	1520-2¼ 748 (800-2¼)	NA	
CIRCLING	1520-1 748 (800-1)	1520-1¼ 748 (800-1¼)	1520-2¼ 748 (800-2¼)	NA	