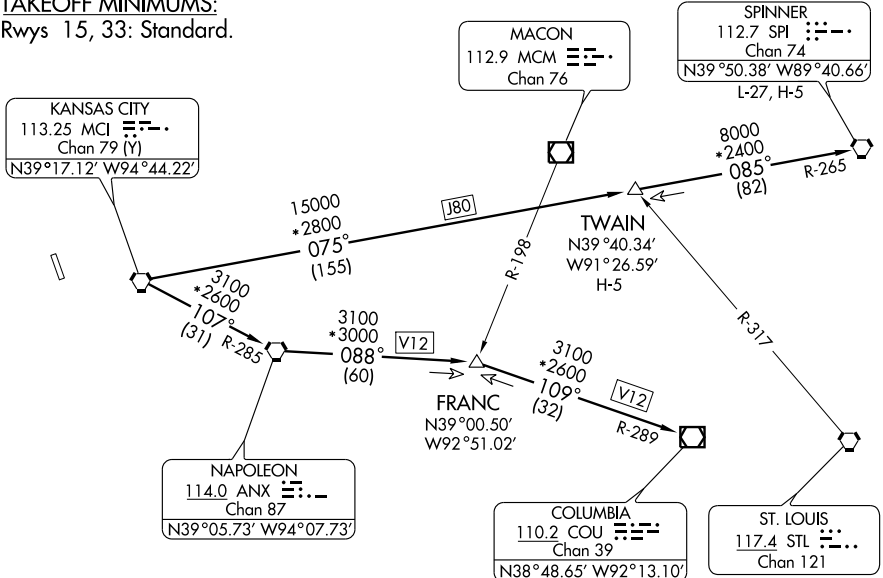


KANSAS CITY DEP CON  
124.7 318.1

NOTE: Chart not to scale.

**TAKEOFF MINIMUMS:**  
Rwys 15, 33: Standard.



NOTE: Radar Required.  
NOTE: DME Required for TWAIN and SPINNER Transitions.

**Takeoff Obstacles:**

Rwy 15, road 79 feet from DER, across departure course, up to 15' AGL/779' MSL. Building 400 feet from DER, 580 feet left of centerline, 28' AGL/788' MSL. Pumphouse 444 feet from DER, 564 feet left of centerline, 23' AGL/783' MSL. Boats 1063 feet from DER, across departure course, up to 45' AGL/800' MSL. Trees 2165 feet from DER, across departure course, up to 75' AGL/838' MSL.  
Rwy 33, multiple trees and poles beginning 117 feet from DER, on centerline, up to 100' AGL/879' MSL. Levee 187 feet from DER, on centerline, 35' AGL/782' MSL.

### DEPARTURE ROUTE DESCRIPTION

Expect vectors to appropriate route. Expect filed altitude 10 minutes after departure.

**COLUMBIA TRANSITION (LAKES5.COU):** From over MCI VORTAC via MCI R-107 and ANX R-285 to ANX VORTAC, then via ANX R-088 to FRANC INT, then via COU R-289 to COU VOR/DME.

**SPINNER TRANSITION (LAKES5.SPI):** From over MCI VORTAC via MCI R-075 and SPI R-265 to TWAIN INT, then via SPI R-265 to SPI VORTAC.

**TWAIN TRANSITION (LAKES5.TWAIN):** From over MCI VORTAC via MCI R-075 and SPI R-265 to TWAIN INT.

NC-2, 22 OCT 2009 to 19 NOV 2009

NC-2, 22 OCT 2009 to 19 NOV 2009