

VOR/DME FTK <b>109.6</b> Chan <b>33</b>	APCH CRS <b>349°</b>	Rwy ldg TDZE Arpt Elev <b>5585</b> <b>741</b> <b>756</b>
---	-------------------------	--

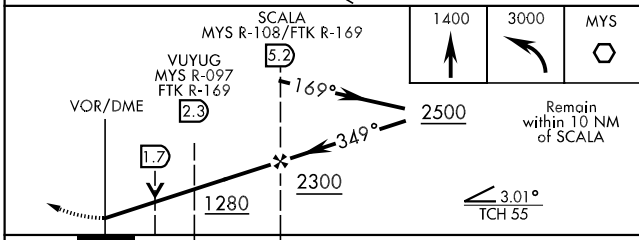
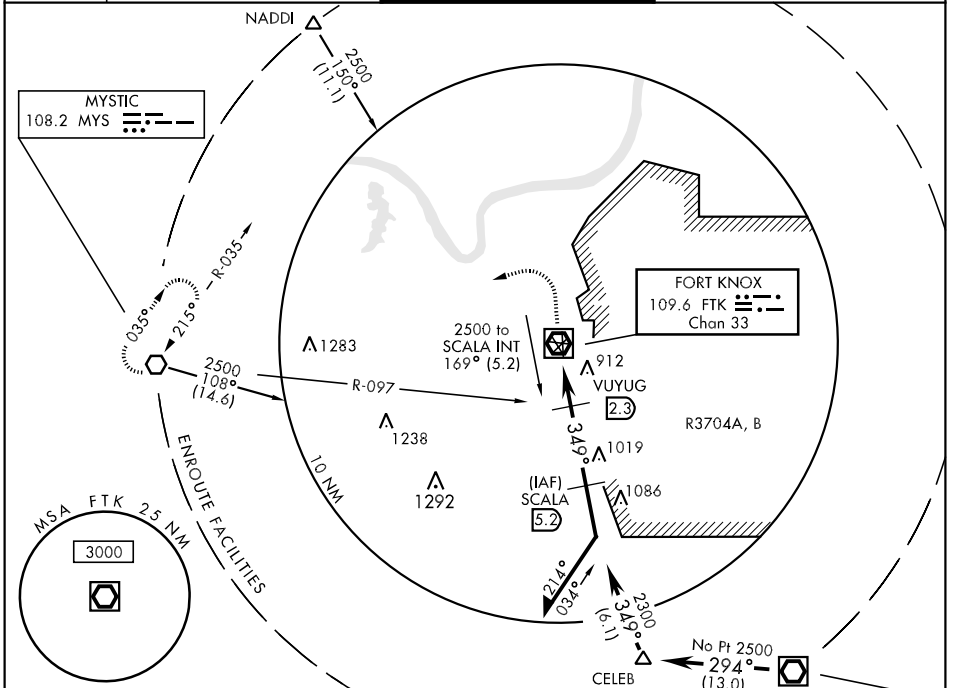
AL-151 [USA]

GODMAN AAF (KFTK)

▼ Visibility reduction by helicopters NA.  
 \* For inoperative ODALS, increase S-36 visibility CAT D ¼ mile.

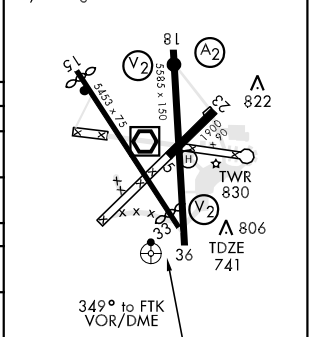
ODALS MISSED APPROACH: Climb to 1400, then climbing left turn to 3000 direct MYS VOR and hold.

ATIS ★ <b>109.6</b>	LOUISVILLE APP CON <b>123.675 327.0</b>	GODMAN TOWER ★ <b>133.35 233.7</b>	GND CON <b>121.9 239.3</b>
------------------------	--	---------------------------------------	-------------------------------



ELEV 756	HIRL Rwy 15-33, 18-36
Rwy 15 ldg 5253'	REIL Rwy 15
Rwy 33 ldg 5253'	

CATEGORY	A	B	C	D
S-36 *	1280-¾	539 (600-¾)	1280-1½	1280-1½
CIRCLING	1280-1	1340-1	1340-1½	1340-2
	524 (600-1)	584 (600-1)	584 (600-1½)	584 (600-2)
VUYUG MINIMA				
S-36 *	1180-¾	439 (500-¾)	1180-1	1180-1½
CIRCLING	1220-1	1340-1	1340-1½	1340-2
	464 (500-1)	584 (600-1)	584 (600-1½)	584 (600-2)



SE-1, 22 OCT 2009 to 19 NOV 2009

SE-1, 22 OCT 2009 to 19 NOV 2009