

VORTAC GXU <b>110.6</b> Chan <b>43</b>	APCH CRS <b>043°</b>	Rwy ldg <b>10,001</b> TDZE <b>131</b> Arpt Elev <b>131</b>
----------------------------------------------	-------------------------	------------------------------------------------------------------

AL-150 [USAF]

MC GUIRE AFB (KWRI)

**⚠** \* When ALS inop, increase CAT AB RVR to 50 and vis to 1 mile, CAT C RVR to 60 and vis to 1¼ miles, CAT D vis to 1½ miles, CAT E vis to 1¾ miles.



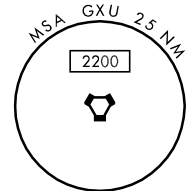
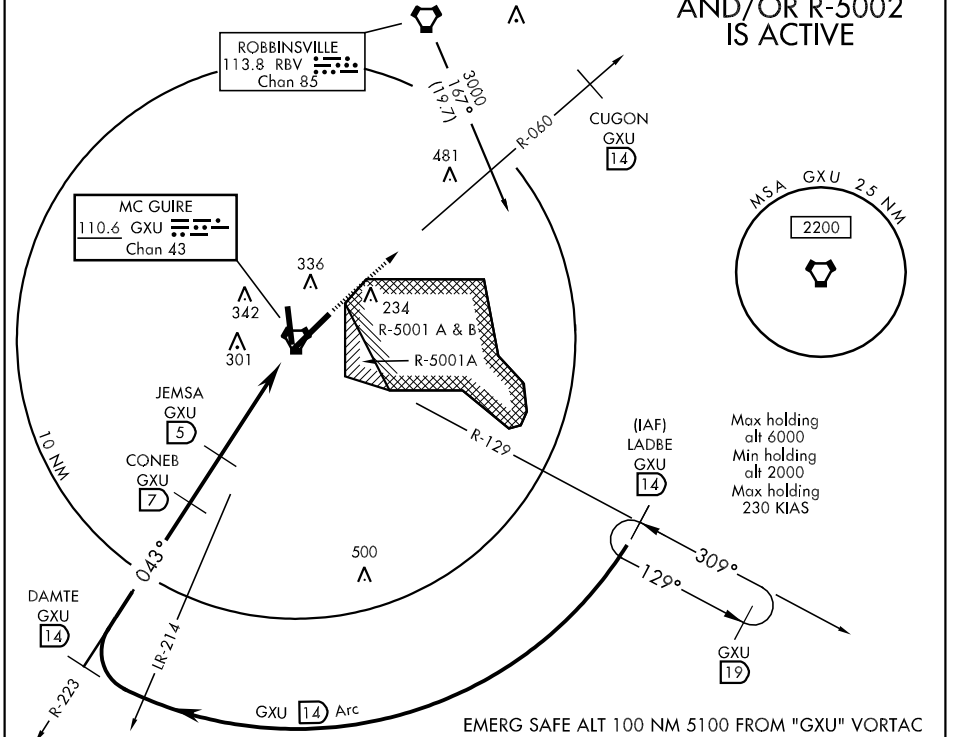
**MISSED APPROACH:** Climbing to 2000, proceed direct GXU VORTAC then outbound R-060 to CUGON. EFC with ATC.

ATIS <b>110.6 270.1</b>	MC GUIRE APP CON <b>124.15 363.8</b>	MC GUIRE TOWER <b>118.65 255.6</b>	GND CON <b>121.8 275.8</b>	CLNC DEL <b>135.2 335.8</b>
----------------------------	-----------------------------------------	---------------------------------------	-------------------------------	--------------------------------

\*\*Circling not authorized E of field.

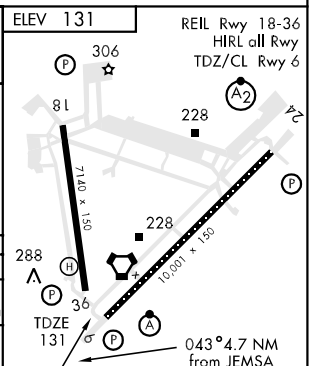
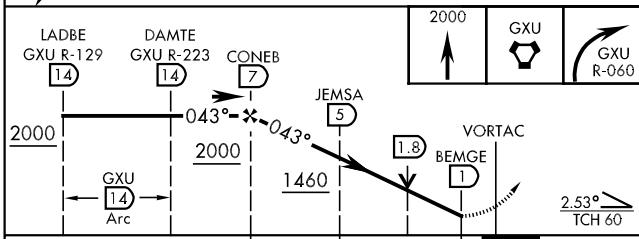
**RADAR REQUIRED  
WHEN R-5001  
AND/OR R-5002  
IS ACTIVE**

If radar inoperative, expect 15 min delay for deactivation of R-5001 and/or R-5002.



Max holding alt 6000  
Min holding alt 2000  
Max holding 230 KIAS

EMERG SAFE ALT 100 NM 5100 FROM "GXU" VORTAC



CATEGORY	A	B	C	D	E
S-6 *	620/40	489	(500-¾)	620/50 489 (500-1)	620/60 489 (500-1¼)
CIRCLING **	660-1	529 (600-1)	680-1½ 549 (600-1½)	700-2 569 (600-2)	1200-3 1069(1100-3)

NE-2, 22 OCT 2009 to 19 NOV 2009

NE-2, 22 OCT 2009 to 19 NOV 2009