

WRIGHTSTOWN, NEW JERSEY

# VOR/DME or TACAN RWY 18

VORTAC GXU <b>110.6</b> Chan <b>43</b>	APCH CRS <b>178°</b>	Rwy Idg TDZE Arpt Elev <b>7140</b> <b>123</b> <b>131</b>
--	-------------------------	---

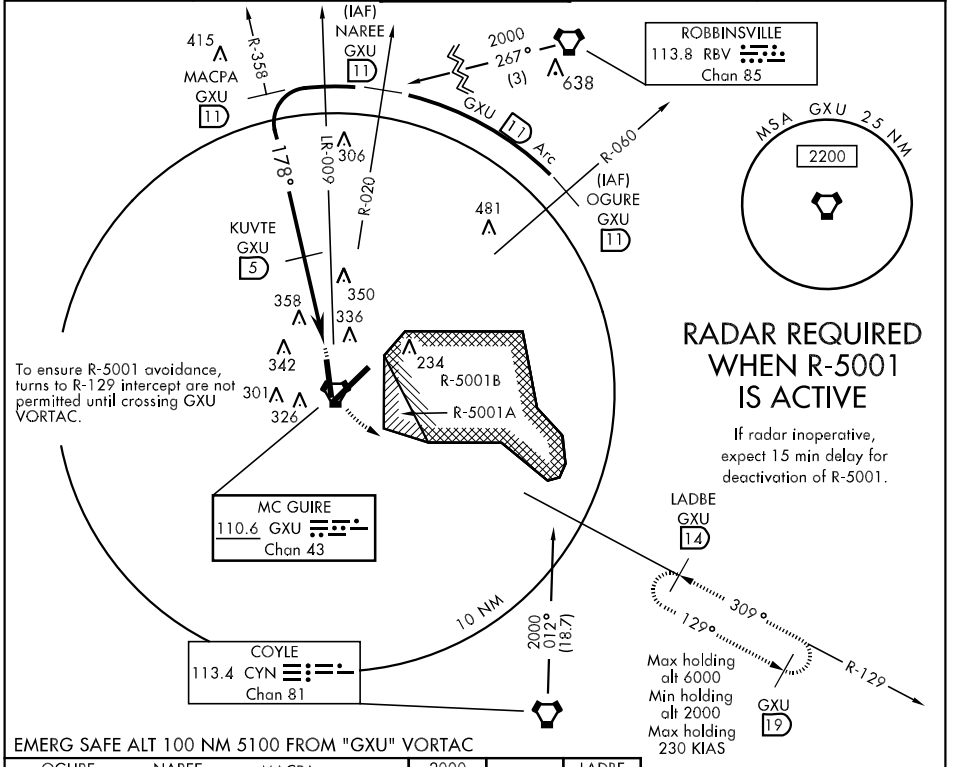
AL-150 [USAF]

MC GUIRE AFB (KWRI)

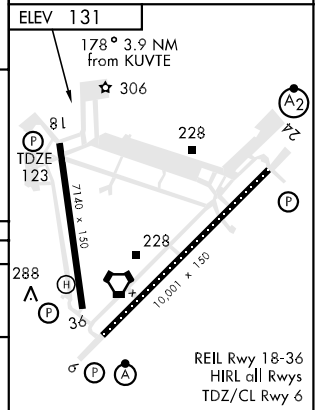
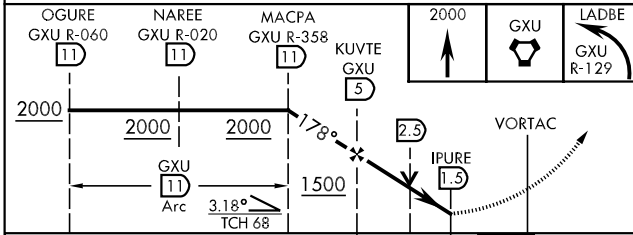
▼ \*Circling not authorized E of field.

MISSED APPROACH: Climbing to 2000, proceed direct GXU then outbound GXU R-129 to LADBE (GXU R-129/14) and hold.

ATIS <b>110.6 270.1</b>	MC GUIRE APP CON <b>124.15 363.8</b>	MC GUIRE TOWER <b>118.65 255.6</b>	GND CON <b>121.8 275.8</b>	CLNC DEL <b>135.2 335.8</b>
----------------------------	---	---------------------------------------	-------------------------------	--------------------------------



EMERG SAFE ALT 100 NM 5100 FROM "GXU" VORTAC



CATEGORY	A	B	C	D	E
S-18	640-1	517 (600-1)	640-1½ 517 (600-1½)	640-1¾	517 (600-1¾)
CIRCLING *	660-1	529 (600-1)	680-1½ 549 (600-1½)	700-2 569 (600-2)	1200-3 1069 (1100-3)

WRIGHTSTOWN, NEW JERSEY

40°01'N-74°36'W

MC GUIRE AFB (KWRI)

Orig 09267

# VOR/DME or TACAN RWY 18

NE-2, 22 OCT 2009 to 19 NOV 2009

NE-2, 22 OCT 2009 to 19 NOV 2009