

WRIGHTSTOWN, NEW JERSEY


APCH CRS	Rwy Idg	10,001
058°	TDZE	131
	Arpt Elev	131

AL-150 [USAF]

RNAV (GPS) RWY 06

MC GUIRE AFB (KWRI)

▼ * When ALS inop, increase CAT AB RVR to 50 and vis to 1 mile, CAT C RVR to 60, vis to 1¼ miles, CAT D vis to 1½ miles, CAT E vis to 1¾ miles.

SALSF
 MISSED APPROACH: Climbing to 2000, proceed direct BORKE, expect further clearance from ATC.

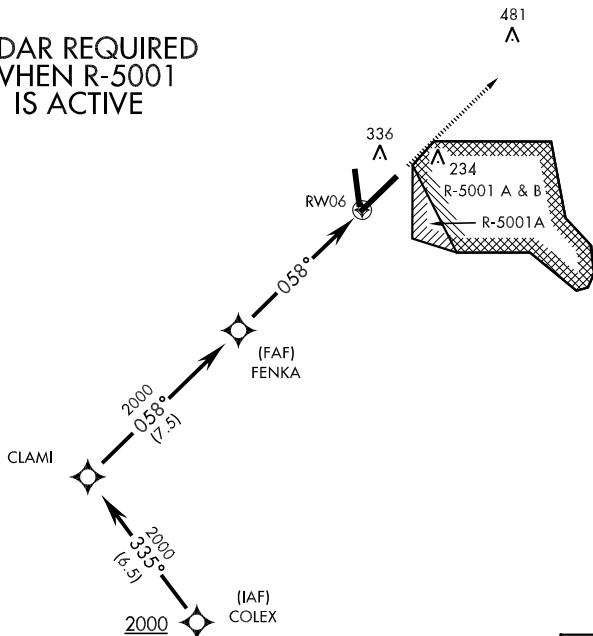
ATIS 110.6 270.1	MC GUIRE APP CON 124.15 363.8	MC GUIRE TOWER 118.65 255.6	GND CON 121.8 275.8	CLNC DEL 135.2 335.8
----------------------------	---	---------------------------------------	-------------------------------	--------------------------------

** Circling not authorized East of field.

DME/DME RNP -0.3 NA.

If radar inoperative, expect 15 min delay for deactivation of R-5001.

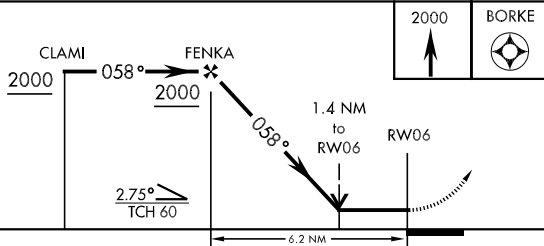
RADAR REQUIRED WHEN R-5001 IS ACTIVE



NE-2, 22 OCT 2009 to 19 NOV 2009

NE-2, 22 OCT 2009 to 19 NOV 2009

EMERG SAFE ALT 100 NM 5100



ELEV 131
REIL Rwy 18-36 HIRL all Rwy's TDZL/CL Rwy 6

CATEGORY	A	B	C	D	E
LNAV MDA*	600/24 469 (500-½)		600/40 469 (500-¾)	600/50 469 (500-1)	600/60 469 (500-1¼)
CIRCLING**	660-1 529 (600-1)		680-1½ 549 (600-1½)	700-2 569 (600-2)	1200-3 1069(1100-3)

WRIGHTSTOWN, NEW JERSEY
 Orig 09267

40°01'N-74°36'W

MC GUIRE AFB (KWRI)

RNAV (GPS) RWY 06