

WRIGHTSTOWN, NEW JERSEY

APCH CRS	Rwy ldg	<b>7140</b>
<b>185°</b>	TDZE	<b>123</b>
	Arpt Elev	<b>131</b>

AL-150 [USAF]

# RNAV (GPS) RWY 36

MC GUIRE AFB (KWRI)

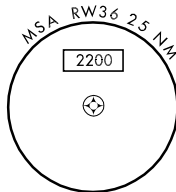
▼ \* Circling not authorized E of field. MISSED APPROACH: Climbing to 2000 proceed direct LODBE then turn right direct RBV VORTAC. Expect clearance from ATC.

ATIS <b>110.6 270.1</b>	MC GUIRE APP CON <b>124.15 363.8</b>	MC GUIRE TOWER <b>118.65 255.6</b>	GND CON <b>121.8 275.8</b>	CLNC DEL <b>135.2 335.8</b>
----------------------------	---	---------------------------------------	-------------------------------	--------------------------------

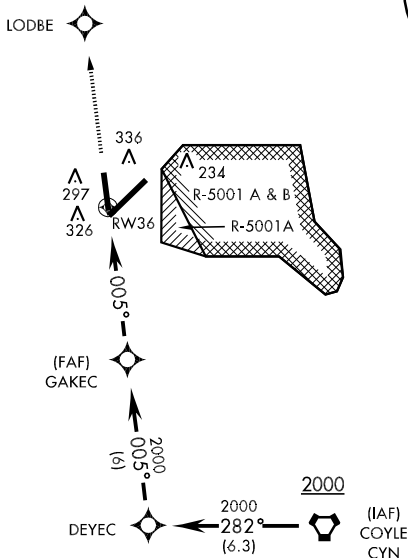
DME/DME RNP -0.3 NA.

If radar inoperative, expect 15 min delay for deactivation of R-5001.

ROBBINSVILLE RBV  
638



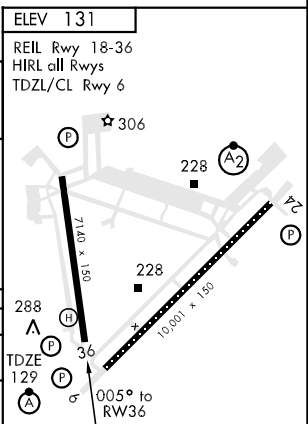
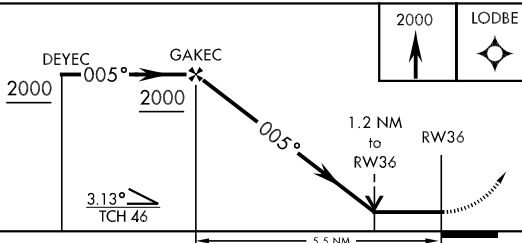
**RADAR REQUIRED WHEN R-5001 IS ACTIVE**



NE-2, 22 OCT 2009 to 19 NOV 2009

NE-2, 22 OCT 2009 to 19 NOV 2009

EMERG SAFE ALT 100 NM 5100



CATEGORY	A	B	C	D	E
LNAV MDA	560-1	431 (500-1)	560-1¼ 431 (500-1¼)	560-1½	431 (500-1½)
CIRCLING *	660-1	529 (600-1)	680-1½ 549 (600-1½)	700-2 569 (600-2)	1200-3 1069(1100-3)

WRIGHTSTOWN, NEW JERSEY  
Orig 09295

40°01'N-74°36'W

MC GUIRE AFB (KWRI)

# RNAV (GPS) RWY 36