

MODENA THREE DEPARTURE (MXE3.MXE)

SHL-150 [USAF]

WRIGHTSTOWN, NEW JERSEY

NE-2, 22 OCT 2009 to 19 NOV 2009

RADAR REQUIRED WHEN R-5001 IS ACTIVE

If RADAR inoperative, expect 1.5 minute delay for deactivation of R-5001

DME REQUIRED

- ATIS 110.6 270.1
- CLNC DEL 135.2 335.8
- GND CON
- 121.8 275.8
- MC GUIRE TOWER
- 118.65 255.6
- MC GUIRE DEP CON
- 124.15 363.8

LANCASTER
117.3 LRP
Chan 120

BELLAIRE
117.1 AIR
Chan 118
L-29, H-3-4-6

MODENA
113.2 MXE
Chan 79

WESTMINSTER
117.9 EMI
Chan 126
L-29-34-36, H-3-4-6

MARTINSBURG
112.1 MRB
Chan 58
L-29, H-3-4-6

ROBBINSVILLE
113.8 RBV
Chan 85

MC GUIRE
110.6 GXU
Chan 43

COYLE
113.4 CYN
Chan 81

Rwy	Knots	60	120	180	240	300	360
6	V/V(fpm)	346	692	1038	1384	1730	2076
36	V/V(fpm)	444	888	1332	1776	2220	2664

ATC Climb Rate to 5000'

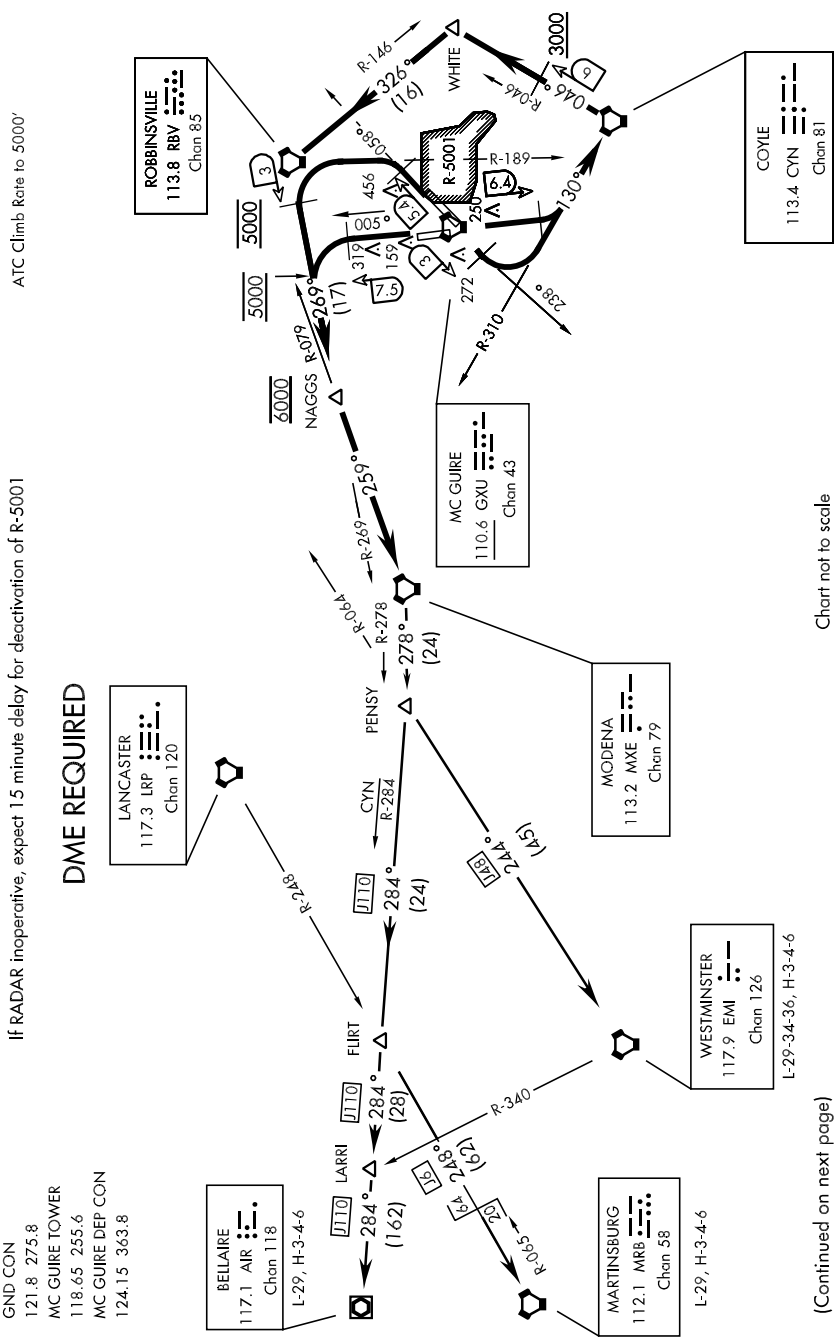


Chart not to scale

(Continued on next page)

MODENA THREE DEPARTURE (MXE3.MXE)

WRIGHTSTOWN, NEW JERSEY

MC GUIRE AFB (KWRI)

NE-2, 22 OCT 2009 to 19 NOV 2009