

CRESI-THREE DEPARTURE RWY 6, 36 (CRESI 3•LEEAH)

MC GUIRE AFB (KWRI)
WRIGHTSTOWN, NEW JERSEY

ATIS 110.6 270.1
CLNC DEL
135.2 335.8
GND CON
121.8 275.8
MC GUIRE TOWER
118.65 255.6
MC GUIRE DEP CON
124.15 363.8

SHL-150 [USAF]

* Approximate
distance to
WHITE INT

DME REQUIRED

NOTE: If radar inoperative, expect
15 minute delay for deactivation
of R-5001.

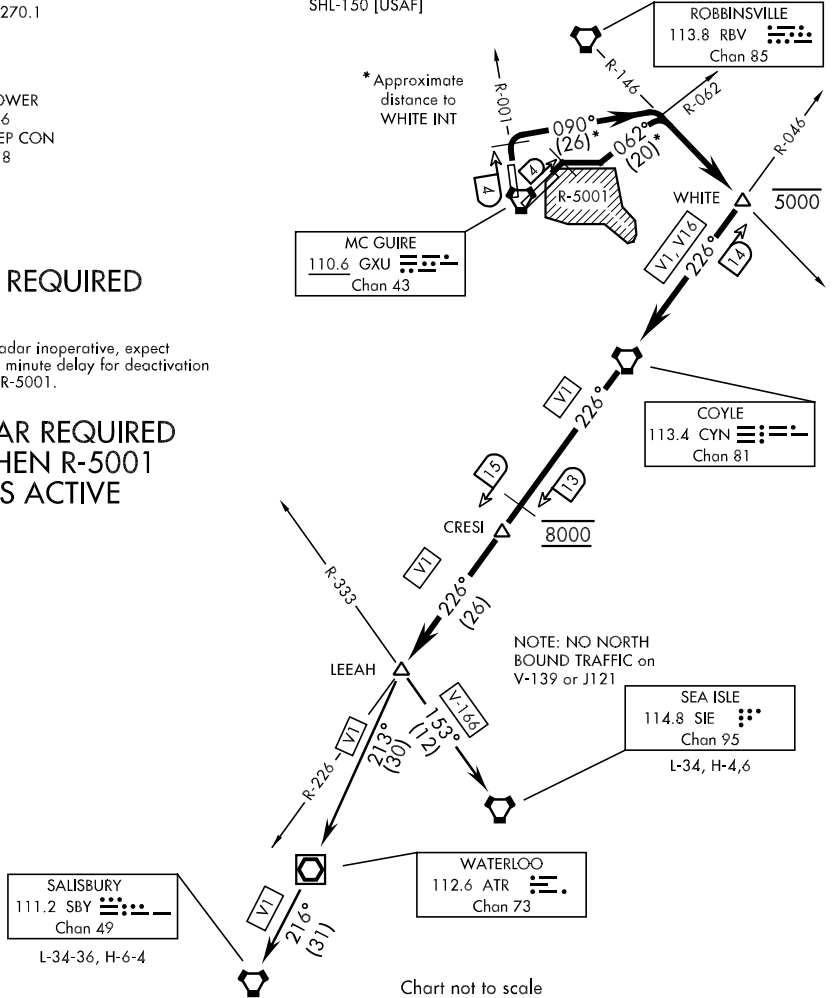
RADAR REQUIRED
WHEN R-5001
IS ACTIVE

Chart not to scale

DEPARTURE ROUTE DESCRIPTION

TAKE-OFF RWY 6: Climb on a track of 058°. At GXU VORTAC 4 DME turn right and proceed via GXU R-062 until intercepting the RBV VORTAC R-146 to WHITE INT. Then

TAKE-OFF RWY 36: Climb on GXU VORTAC R-001. At GXU 4 DME turn right and track 090° until intercepting the RBV VORTAC R-146 to WHITE INT. Then

.... Then via V1 LEEAH. Cross WHITE INT at or below 5000. Cross CYN VORTAC R-226/13 DME at and maintain 8000.

Then via (transition) or (as assigned route).

NOTE: EXPECT REQUESTED ALTITUDE 10 MINUTES AFTER DEPARTURE.

SALISBURY TRANSITION: (CRESI 3•SBY) via V1 to SBY VORTAC.

SEA ISLE TRANSITION: (CRESI 3•SIE) via V-166 to SIE VORTAC.

CRESI-THREE DEPARTURE RWY 6, 36 (CRESI 3•LEEAH)

WRIGHTSTOWN, NEW JERSEY
MC GUIRE AFB (KWRI)