

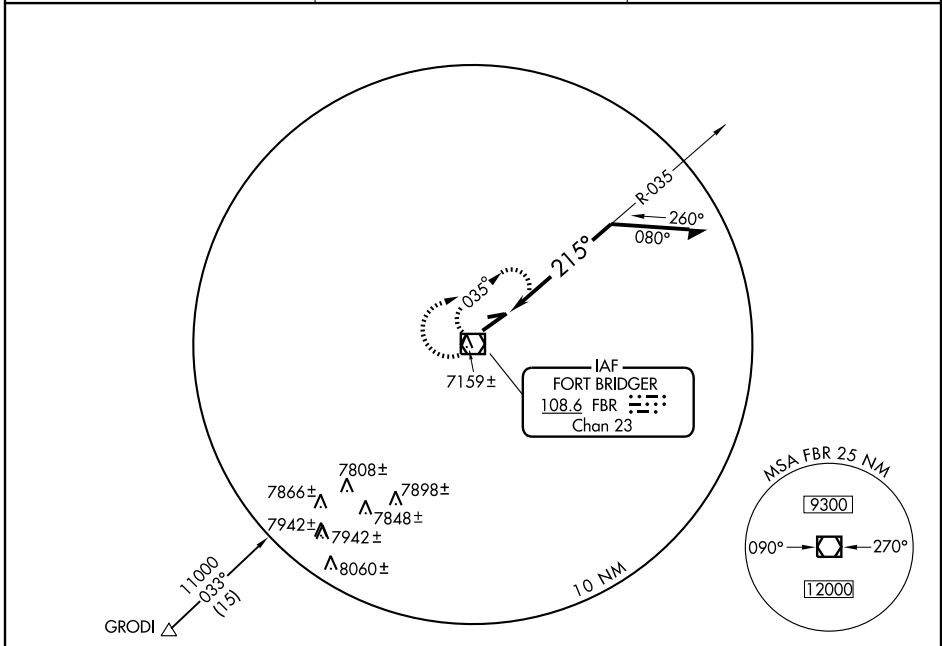
# VOR RWY 22

FORT BRIDGER (FBR)

VOR/DME FBR <b>108.6</b> Chan <b>23</b>	APP CRS <b>215°</b>	Rwy Idg TDZE Apt Elev	<b>6402</b> <b>7018</b> <b>7034</b>
---	------------------------	-----------------------------	---

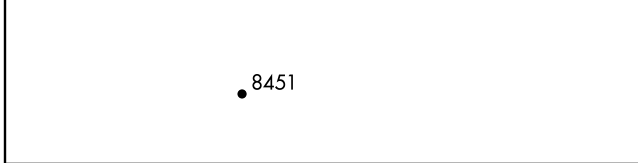
**NA** If local altimeter setting not received, procedure NA. MISSED APPROACH: Climbing right turn to 9000 in FBR VOR/DME holding pattern.

AWOS-1 <b>118.8</b>	CASPER RADIO <b>122.3</b>	UNICOM <b>122.8</b> (CTAF) <b>0</b>
------------------------	------------------------------	--



NW-1, 22 OCT 2009 to 19 NOV 2009

NW-1, 22 OCT 2009 to 19 NOV 2009



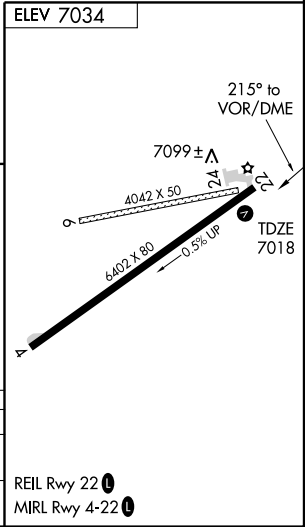
9000 FBR 108.6

VOR/DME\* Remain within 10 NM

035° 8500

215°

\*Maintain 8700 or above until established outbound for procedure turn.



CATEGORY	A	B	C	D
S-22	7440-1	422 (500-1)	7440-1 ¼	422 (500-1 ¼)
CIRCLING	7480-1 446 (500-1)	7500-1 466 (500-1)	7500-1 ½ 466 (500-1 ½)	7600-2 566 (600-2)