

# RNAV (GPS) RWY 22

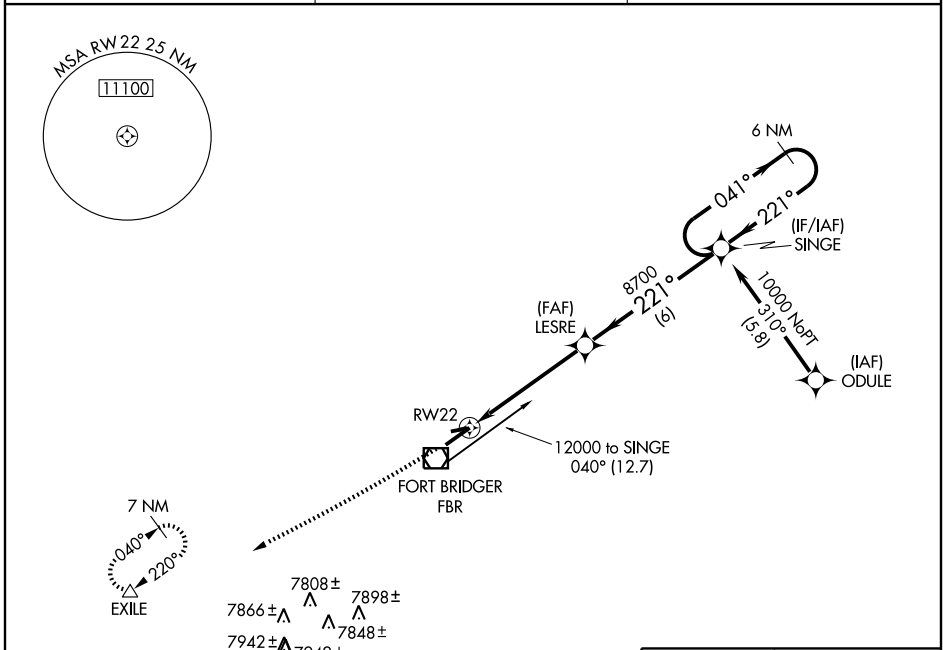
FORT BRIDGER (FBR)

APP CRS <b>221°</b>	Rwy Idg <b>6402</b>
	TDZE <b>7018</b>
	Apt Elev <b>7034</b>

**NA** GPS or RNP-0.3 required. DME/DME RNP-0.3 NA

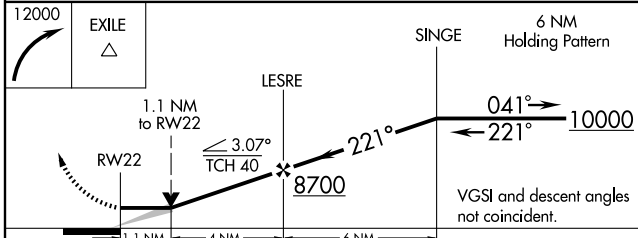
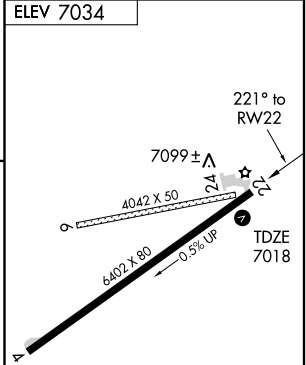
**MISSED APPROACH:** Climbing right turn to 12000 direct EXILE WP and hold.

AWOS-1 <b>118.8</b>	CASPER RADIO <b>122.3</b>	UNICOM <b>122.8 (CTAF)</b>
------------------------	------------------------------	-------------------------------



NW-1, 22 OCT 2009 to 19 NOV 2009

NW-1, 22 OCT 2009 to 19 NOV 2009



CATEGORY	A	B	C	D
LNVA MDA	7360-1 342 (400-1)		7360-1 ¼ 342 (400-1 ¼)	
CIRCLING	7480-1 446 (500-1)	7500-1 466 (500-1)	7500-1 ½ 466 (500-1 ½)	7600-2 566 (600-2)

REIL Rwy 22  
MRL Rwy 4-22