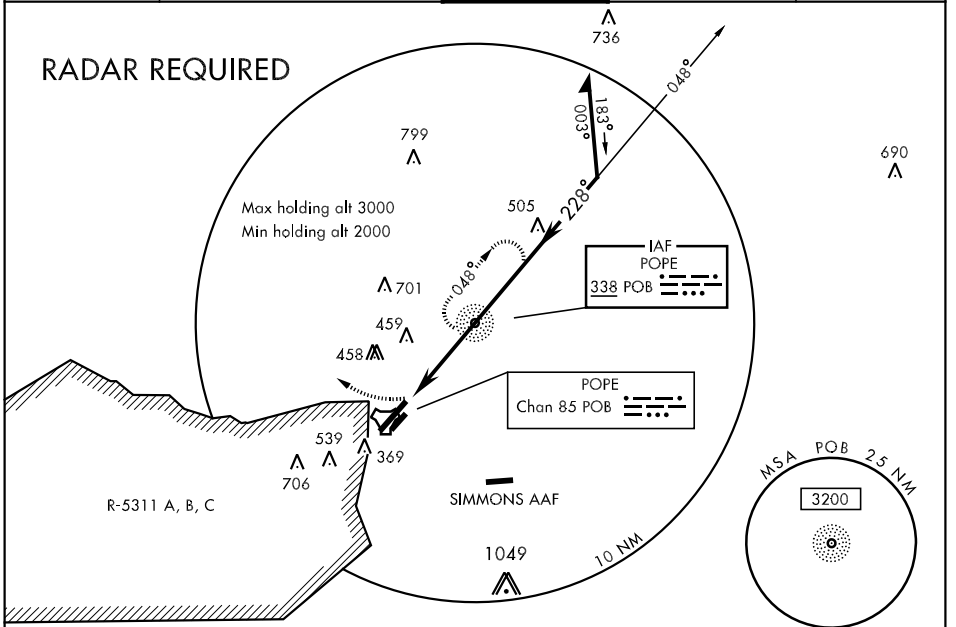


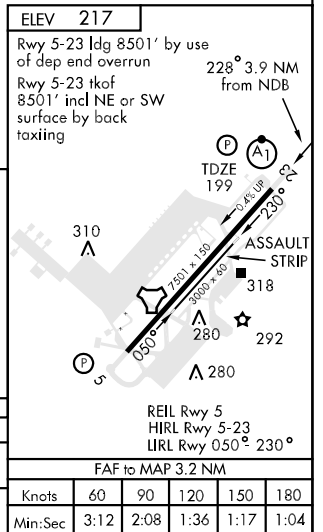
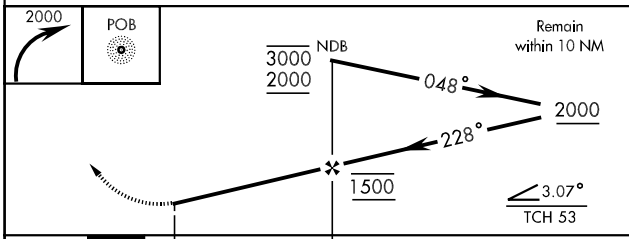
NDB POB <b>338</b>	APCH CRS <b>228°</b>	Rwy ldg TDZE 7501 199 Arpt Elev 217	AL-147 [USAF]	ALSF-1 <b>(A1)</b>	MISSED APPROACH: Climbing right turn to 2000 direct POB NDB and hold, continue climb-in-hold to 2000.
<p>▼ * When ALS inop, increase CAT AB RVR to 50 and vis to 1 mile, CAT C vis to 1½ miles, CAT D to 1¾ miles.                  ** Circling not authorized SE of Rwy 5-23.</p>					

ATIS <b>132.3 353.725</b>	FAYETTEVILLE APP CON <b>125.175 397.85</b> <b>133.0 295.0</b> (271° - 090°) (091° - 270°)	POPE TOWER <b>135.025 291.1</b>	GND CON <b>124.55 275.8</b>	CLNC DEL <b>275.8</b>
------------------------------	---	------------------------------------	--------------------------------	--------------------------



CAUTION: Avoid R-5311 A, B, C located 2.5 DME West of field

EMERG SAFE ALT 100 NM 5300 FROM "POB" TACAN



SE-2, 22 OCT 2009 to 19 NOV 2009

SE-2, 22 OCT 2009 to 19 NOV 2009