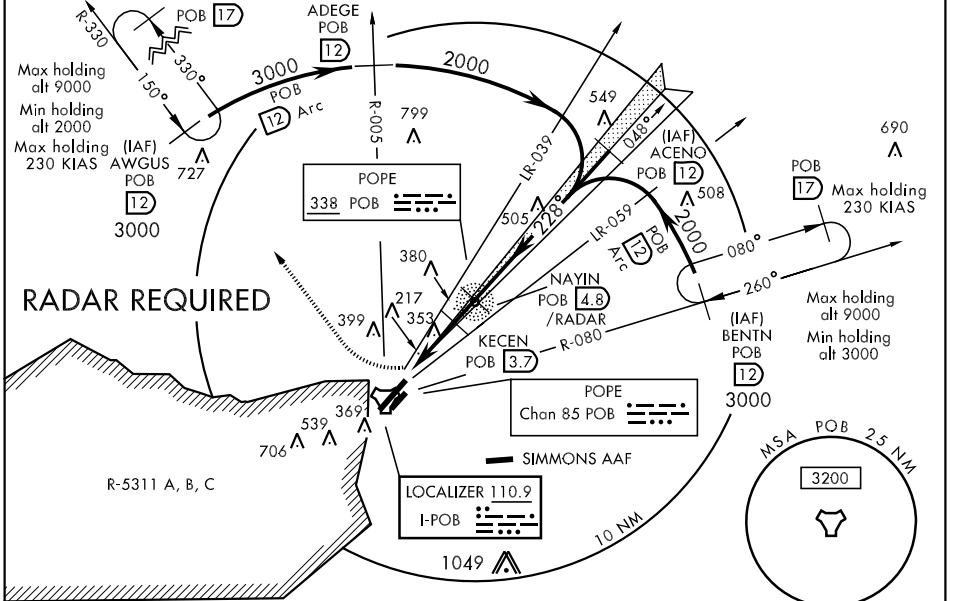


LOC I-POB 110.9	APCH CRS 228°	Rwy Idg TDZE Arpt Elev 7501 199 217	AL-147 [USAF]	POPE AFB (KPOB)
---------------------------	-------------------------	---	---------------	-----------------

* When ALS inop, increase CAT ABCD RVR to 40 and vis to 3/4 mile.
 ** When ALS inop, increase CAT AB RVR to 50 and vis to 1 mile, CAT CD RVR to 60 and vis to 1 1/2 miles.
 *** Circling not authorized SE of Rwy 5-23.

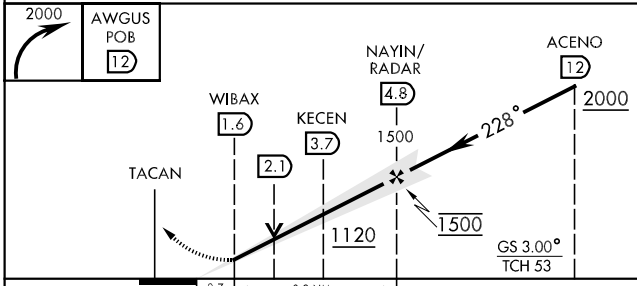
MISSED APPROACH: Climbing right turn to 2000 direct AWGUS and hold.

ATIS 132.3 353.725	FAYETTEVILLE APP CON 125.175 397.85 133.0 295.0 (271° - 090°) (091° - 270°)	POPE TOWER 135.025 291.1	GND CON 124.55 275.8	CLNC DEL 275.8
------------------------------	---	------------------------------------	--------------------------------	--------------------------

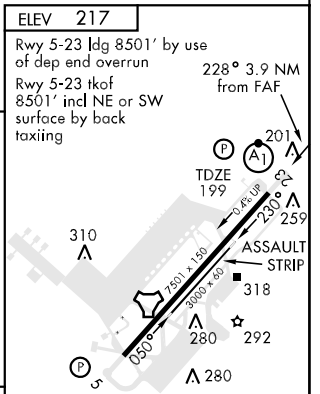


CAUTION: Avoid R-5311 A, B, C located 2.5 DME West of field

EMERG SAFE ALT 100 NM 5300 FROM "POB" TACAN



CATEGORY	A	B	C	D
S-ILS 23*	399/24 200 (200-1/2)			
S-LOC 23**	620/24	421 (500-1/2)	620/40	421 (500-3/4)
CIRCLING ***	680-1	463 (500-1)	680-1 1/2	860-2
	463 (500-1 1/2) 643 (700-2)			



FAF to MAP 3.2 NM					
Knots	60	90	120	150	180
Min:Sec	3:12	2:08	1:36	1:17	1:04

SE-2, 22 OCT 2009 to 19 NOV 2009

SE-2, 22 OCT 2009 to 19 NOV 2009