

APCH CRS 327°	Rwy Idg 9300
	TDZE 226
	Arpt Elev 232

AL-146 [USA]

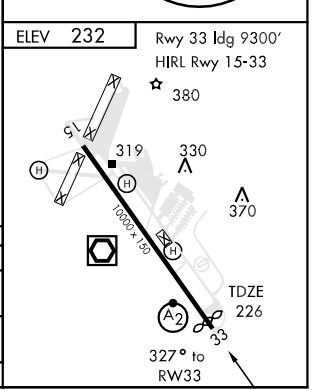
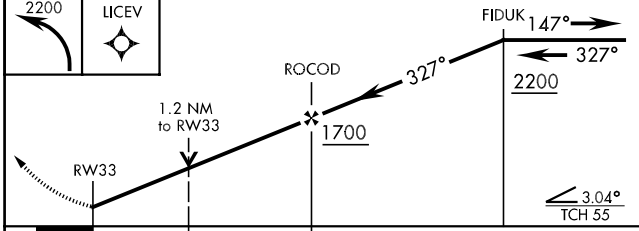
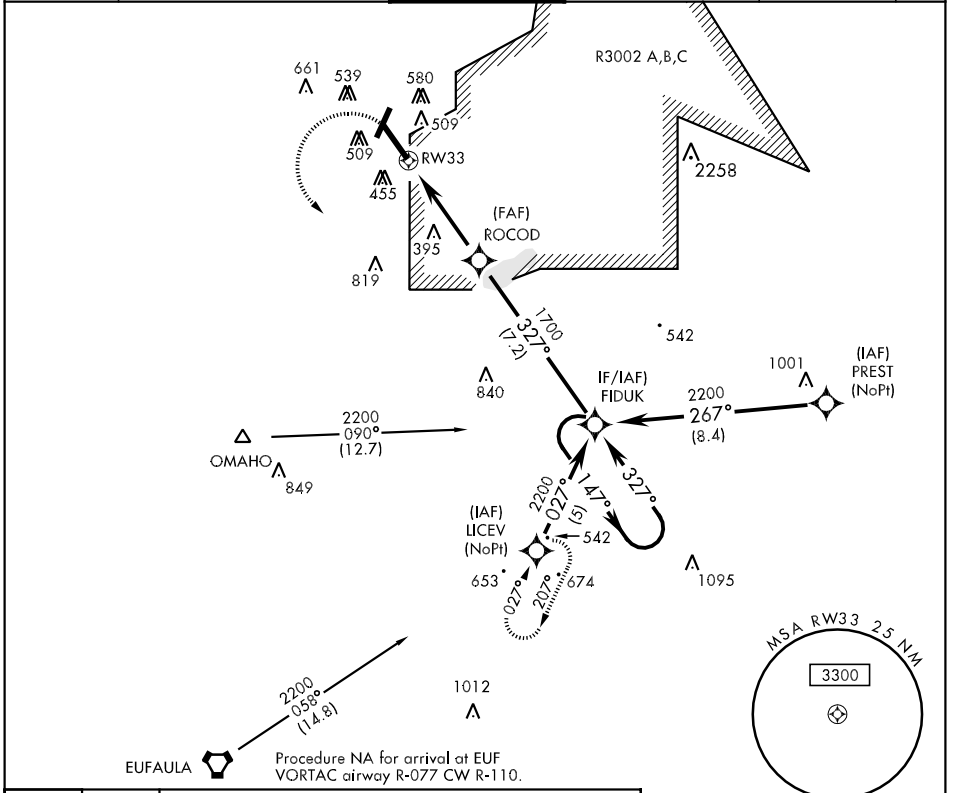
LAWSON AAF (KLSF)

- ▼ *When ALS inop, increase CAT D vis to 1½ miles.
 - ▲ **Circling not authorized E of Rwy 15-33.
- DME/DME RNP-0.3 NA.

SALSF
A2

MISSED APPROACH: Climbing left turn to 2200 direct LICEV and hold.

ATIS ★ 134.375	ATLANTA APP CON 125.5 323.1 b/w 7000 126.55 353.75 7000 and abv	LAWSON TOWER ★ 119.05 269.525	GND CON 121.7 254.25	CLNC DEL 121.7 251.15	ASR/PAR
--------------------------	---	---	--------------------------------	---------------------------------	---------



CATEGORY	A		B		C		D	
RNAV MDA*	660/40	434 (500-¾)	660/50	434 (500-1)	660/60	434 (500-1½)	660/60	434 (500-1½)
CIRCLING**	820-1	588 (600-1)	840-1¾	608 (700-1¾)	880-2	648 (700-2)	880-2	648 (700-2)
S-PAR 33	426/24	200 (200-½)	426/40	200 (200-¾)	426/40	200 (200-¾)	426/40	200 (200-¾)

SE-4, 22 OCT 2009 to 19 NOV 2009

SE-4, 22 OCT 2009 to 19 NOV 2009