

RNAV (GPS) RWY 9

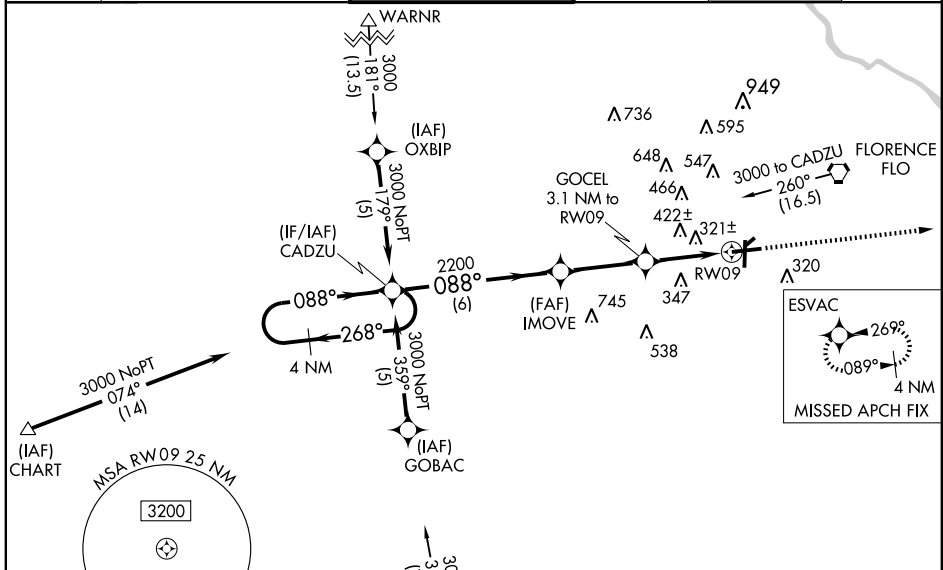
FLORENCE RGNL (FLO)

WAAS CH 70710 W09A	APP CRS 088°	Rwy Idg TDZE 146 Apt Elev 146	6502
--	------------------------	---	-------------

▼ For inoperative MALS, increase LPV all Cats. visibility to 1 mile. For uncompensated Baro-VNAV systems, LNAV/VNAV NA below -15°C (5°F) or above 49°C (120°F).
▲ DME/DME RNP-0.3 NA. When local altimeter setting not received, use Darlington altimeter setting and increase all DA 48 feet and all MDA 60 feet, increase LPV visibility ¼ mile all Cats. For inoperative MALS when using Darlington altimeter setting, increase LPV all Cats. visibility to 1¼ mile. Baro-VNAV and VDP NA when using Darlington altimeter setting.

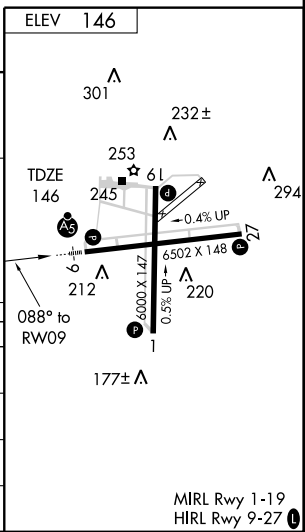
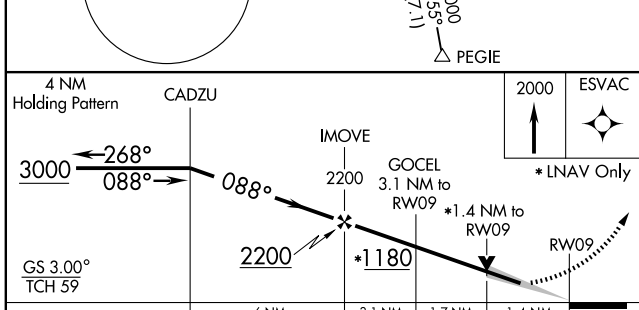
MALS ASR	MISSED APPROACH Climb to 2000 direct ESVAC and hold.
--------------------	--

ATIS 123.625	FLORENCE APP CON* 118.6 341.7 135.25 316.15 (256°-074°) (075°-255°)	FLORENCE TOWER* 125.1 (CTAF) 0 353.85	GND CON 121.9 353.85	CLNC DEL 121.9 353.85	UNICOM 122.95
------------------------	---	---	--------------------------------	---------------------------------	-------------------------



SE-2, 22 OCT 2009 to 19 NOV 2009

SE-2, 22 OCT 2009 to 19 NOV 2009



CATEGORY	A	B	C	D
LPV DA	441-½ 295 (300-½)			
LNAV/VNAV DA	623-1¼ 477 (500-1¼)			
LNAV MDA	660-½ 514 (600-½)	660-1 514 (600-1)	660-1¼ 514 (600-1¼)	
CIRCLING	660-1 514 (600-1)	660-1½ 514 (600-1½)	740-2 594 (600-2)	