

VOR or TACAN RWY 36

FARGO/HECTOR INTL (FAR)

VORTAC FAR 116.2 Chan 109	APP CRS 360°	Rwy Idg TDZE Apt Elev	9000 899 902
---	------------------------	-----------------------------	---

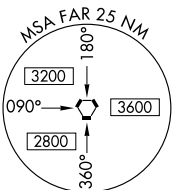
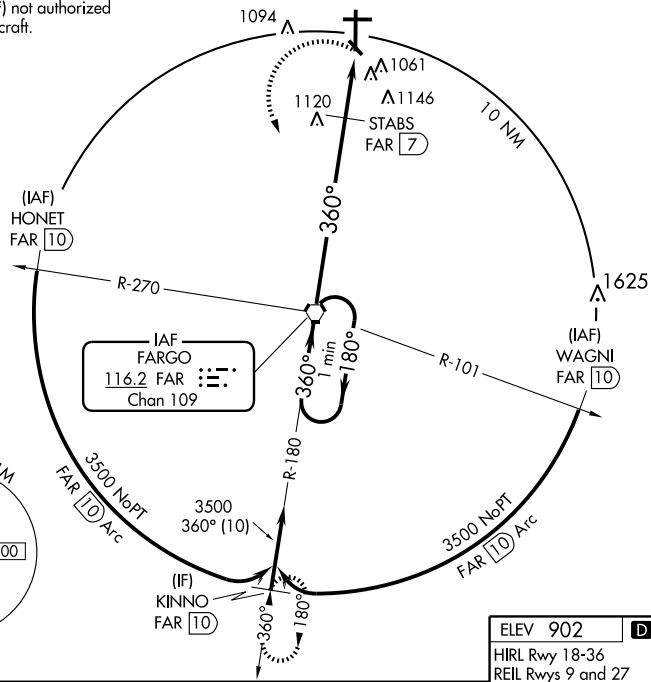
⚠ VOR MINIMUMS: For inoperative MALSR, increase S-36 Cat E visibility to 2½ miles. STABS FIX MINIMUMS: For inoperative MALSR, increase S-36 Cat E visibility to 1¼ mile.



MISSED APPROACH: Climbing left turn to 3500 direct FAR VORTAC and hold. (TACAN aircraft climbing left turn to 3500 direct FAR VORTAC, then via FAR R-180 to KINNO/FAR 10 DME and hold South, right turns, 360° inbound.)

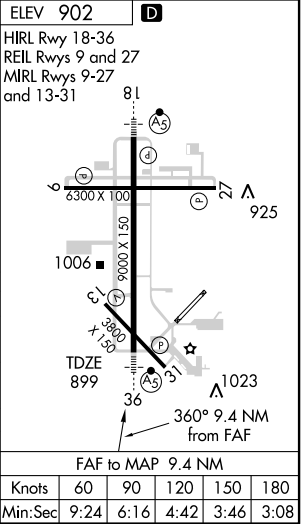
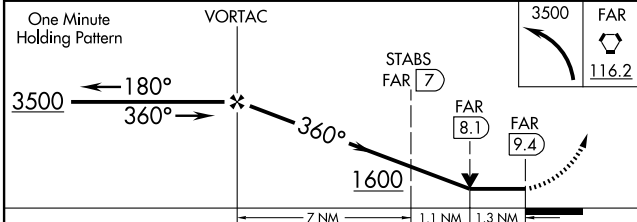
ATIS 124.5 379.2	FARGO APP CON* 120.4 377.15	FARGO TOWER 133.8 290.4	GND CON 121.9 348.6	CLNC DEL 121.9 348.6
----------------------------	---------------------------------------	-----------------------------------	-------------------------------	--------------------------------

Course reversal (IAF) not authorized for TACAN only aircraft.



NC-1, 22 OCT 2009 to 19 NOV 2009

NC-1, 22 OCT 2009 to 19 NOV 2009



CATEGORY	A	B	C	D	E
S-36	1600/24	701 (700-½)	1600-1½ 701 (700-1½)	1600-1¾ 701 (700-1¾)	1600-2 701 (700-2)
CIRCLING	1600-1	698 (700-1)	1600-2 698 (700-2)	1600-2¼ 698 (700-2¼)	1600-2½ 698 (700-2½)
STABS FIX MINIMUMS					
S-36	1380/24	481 (500-½)	1380/40 481 (500-¾)	1380/50 481 (500-1)	1380/60 481 (500-1¼)
CIRCLING	1380-1	478 (500-1)	1380-1½ 478 (500-1½)	1500-2 598 (600-2)	1560-2¼ 658 (700-2¼)

FAF to MAP 9.4 NM	Knots	60	90	120	150	180
	Min:Sec	9:24	6:16	4:42	3:46	3:08