

FARGO, NORTH DAKOTA

AL-144 (FAA)

VOR/DME or TACAN RWY 18

FARGO/HECTOR INTL (F.A.R.)

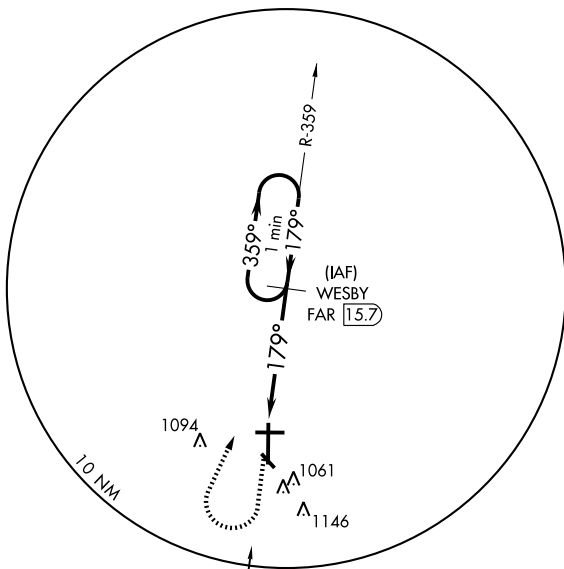
VORTAC FAR 116.2 Chan 109	APP CRS 179°	Rwy Idg TDZE Apt Elev	9000 900 902
---	------------------------	-----------------------------	---

⚠ For inoperative MALSR, increase Cat D visibility to RVR 6000 and Cat E to 1½.



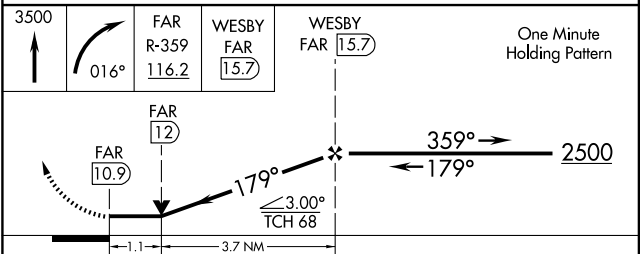
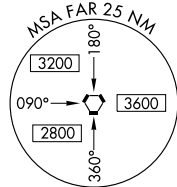
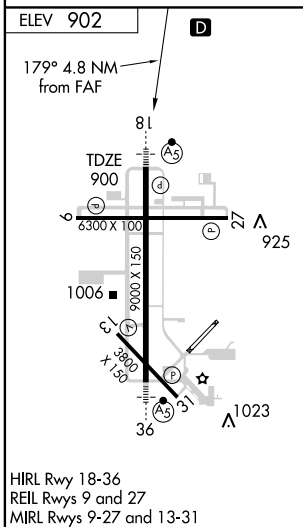
MISSED APPROACH: Climb to 3500 then right turn via heading 016° and FAR R-359 to WESBY/15.7 DME and hold.

ATIS 124.5 379.2	FARGO APP CON* 120.4 377.15	FARGO TOWER 133.8 290.4	GND CON 121.9 348.6	CLNC DEL 121.9 348.6
----------------------------	---------------------------------------	-----------------------------------	-------------------------------	--------------------------------



NC-1, 22 OCT 2009 to 19 NOV 2009

NC-1, 22 OCT 2009 to 19 NOV 2009



CATEGORY	A	B	C	D	E
S-18	1320/24	420 (500-½)	1320/40 420 (500-¾)	1320/50	420 (500-1)
CIRCLING	1380-1	478 (500-1)	1380-1½ 478 (500-1½)	1500-2 598 (600-2)	1560-2¼ 658 (700-2¼)

FARGO, NORTH DAKOTA
Amdt 1B 09295

46°55'N-96°49'W

FARGO/HECTOR INTL (F.A.R.)

VOR/DME or TACAN RWY 18