

VORTAC FAR 116.2 Chan 109	APP CRS 360°	Rwy Idg TDZE Apt Elev	9000 899 902
---	------------------------	-----------------------------	---

JAL-144 [USAF]

FARGO/HECTOR INTL (FAR)

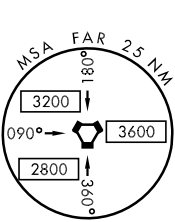
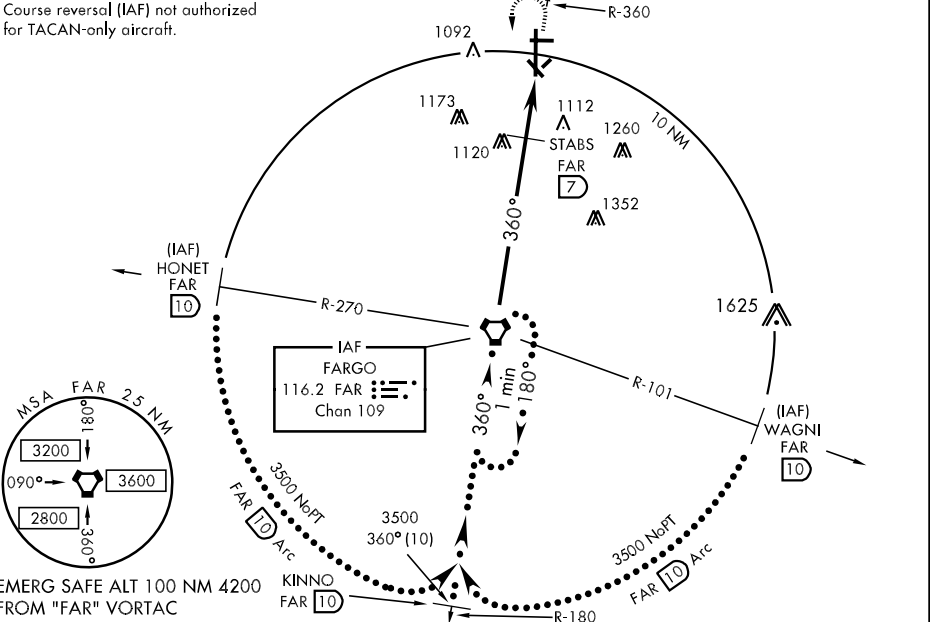
▼ * When ALS inop, increase CAT E vis to 2½ miles.
** When ALS inop, increase CAT E vis to 1¾ miles.



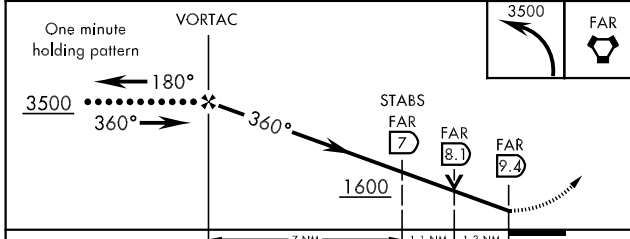
MISSED APPROACH: Climbing left turn to 3500 direct FAR VORTAC and hold. (TACAN aircraft climbing left turn to 3500 direct FAR VORTAC then via FAR R-180 to KINNO/FAR 10 DME and hold south, right turns, 360° inbound.)

ATIS 124.5 379.2	FARGO APP CON 120.4 377.15	FARGO TOWER 133.8 290.4	GND CON 121.9 348.6	CLNC DEL 121.9 348.6	ASR
----------------------------	--------------------------------------	-----------------------------------	-------------------------------	--------------------------------	-----

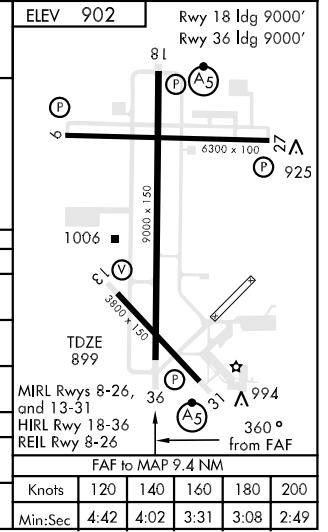
Course reversal (IAF) not authorized for TACAN-only aircraft.



EMERG SAFE ALT 100 NM 4200 FROM "FAR" VORTAC



CATEGORY	C	D	E
S-36*	1600-1½ 701 (700-1½)	1600-1¾ 701 (700-1¾)	1600-2 701 (700-2)
CIRCLING	1600-2 698 (700-2)	1600-2¼ 698 (700-2¼)	1600-2½ 698 (700-2½)
S-ASR 36	1420/50 521 (600-1)	1420/60	521 (600-1½)
STABS FIX MINIMUMS			
S-36**	1380/40 481 (500-¾)	1380/50 481 (500-1)	1380/60 481 (500-1½)
CIRCLING	1380-1½ 478 (500-1½)	1500-2 598 (600-2)	1560-2½ 658 (700-2½)



NC-1, 22 OCT 2009 to 19 NOV 2009

NC-1, 22 OCT 2009 to 19 NOV 2009