

07298  
**YERIN-FOUR DEPARTURE**  
 (YERIN4•YERIN)

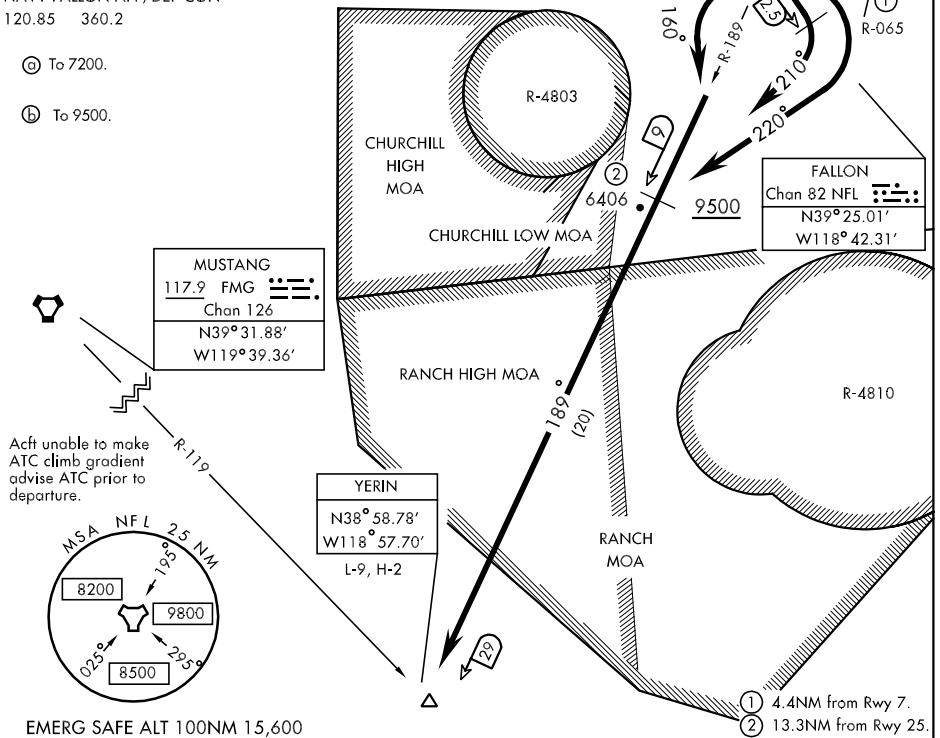
FALLON NAS (VAN VOORHIS FLD)

FALLON, NEVADA

Rwy	Knots	60	120	180	240	300	360	FALLON
* 7	(a) V/V(fpm)	255	510	765	1020	1275	1530	FALLON
† 7	(b) V/V(fpm)	360	720	1080	1440	1800	2160	MUNI
*13L/R	(c) V/V(fpm)	245	490	735	980	1225	1470	4183
†13L/R	(d) V/V(fpm)	485	970	1455	1940	2425	2910	
*25	(e) V/V(fpm)	250	500	750	1000	1250	1500	
†25	(f) V/V(fpm)	355	710	1065	1420	1775	2130	
†31L/R	(g) V/V(fpm)	235	470	705	940	1175	1410	

\* Minimum Military and Civil † ATC Climb Rate

- (a) To 7200.
- (b) To 9500.



SW-4, 22 OCT 2009 to 19 NOV 2009

SW-4, 22 OCT 2009 to 19 NOV 2009

**DEPARTURE ROUTE DESCRIPTION**

**TAKE-OFF RWY 7:** Turn right heading 220° to join and fly NFL R-189 to YERIN. Cross 9 DME at or above 9500. (Left turn-out not authorized).

**TAKE-OFF RWY 13L/R:** Climb on runway heading to NFL 2.5 DME, turn right heading 210° to join and fly NFL R-189 to YERIN. Cross 9 DME at or above 9500.

**TAKE-OFF RWY 25:** Turn left heading 160° to join and fly NFL R-189 to YERIN. Cross 9 DME at or above 9500. (Right turn-out not authorized).

**TAKE-OFF RWY 31L/R:** Climb on runway heading to NFL 1.5 DME, turn right heading 210° to join and fly NFL R-189 to YERIN. Cross NFL R-065 at or above 5200. Cross 9 DME at or above 9500.

YERIN-FOUR DEPARTURE  
 (YERIN4•YERIN)

FALLON, NEVADA  
 FALLON NAS (VAN VOORHIS FLD)