

FALLON, NEVADA

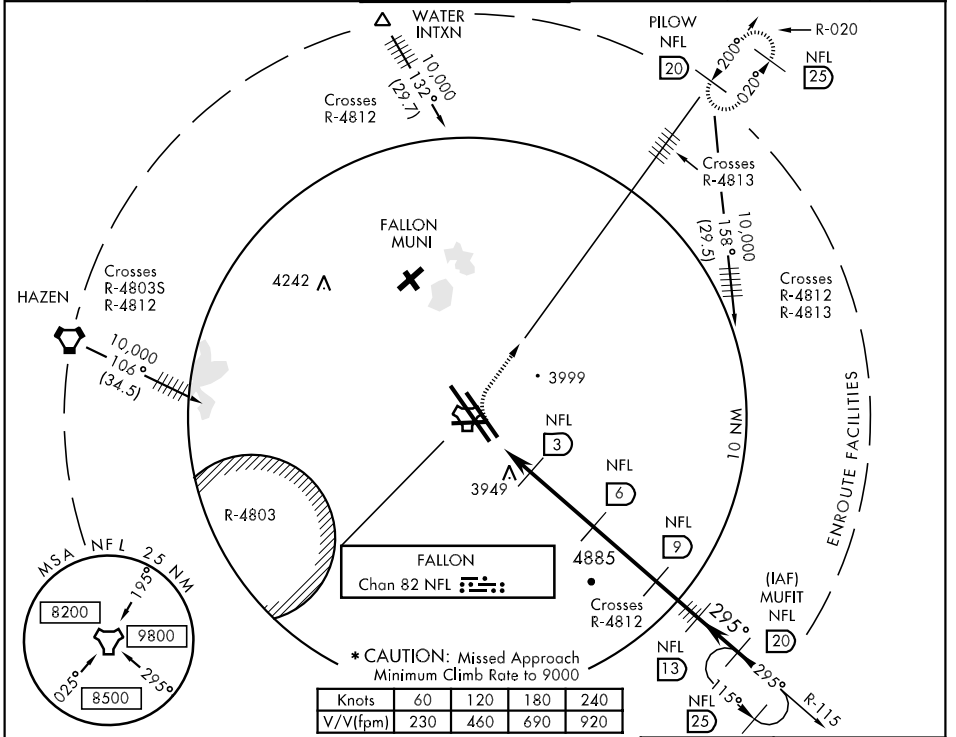
# TACAN Z RWY 31L/R

TACAN NFL Chan <b>82</b>	APCH CRS <b>295°</b>	Rwy Idg TDZE Arpt Elev	31L <b>14,005</b> 31L <b>3926</b> <b>3934</b>	31R <b>11,079</b> 31R <b>3928</b>
--------------------------	----------------------	------------------------	---	--------------------------------------

AL-143 [USN] FALLON NAS (VAN VOORHIS FLD) (KNFL)

\* MISSED APPROACH: Climbing right turn to 9000 on NFL TACAN R-020 to 20 DME (PILOW).

ATIS ★ <b>370.925</b>	NAVY FALLON APP CON <b>120.85 360.2</b>	NAVY FALLON TOWER ★ <b>119.25 340.2</b>	GND CON <b>251.15</b>	CLNC DEL <b>353.55</b>	ASR/PAR
-----------------------	---	---	-----------------------	------------------------	---------



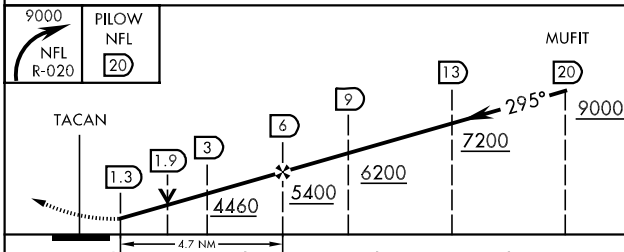
SW-4, 22 OCT 2009 to 19 NOV 2009

SW-4, 22 OCT 2009 to 19 NOV 2009

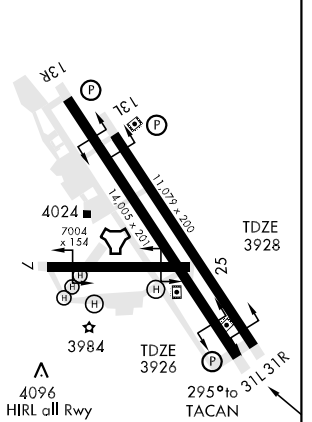
EMERG SAFE ALT 100 NM 15,600

ATC Minimum Climb Rate

ELEV 3934



CATEGORY	A	B	C	D
S-31L	4200-1	274	(300-1)	
S-31R	4200-1	272	(300-1)	
CIRCLING	4400-1 466 (500-1)		4400-1½ 466 (500-1½)	4520-2 586 (600-2)
S-PAR 31L	4126-¾	200	(200-¾)	GS 3.5°
S-PAR 31R	4128-¾	200	(200-¾)	GS 3.5°



FALLON, NEVADA  
09267

39° 25' N - 118° 42' W FALLON NAS (VAN VOORHIS FLD) (KNFL)

# TACAN Z RWY 31L/R