

EVERETT, WASHINGTON

AL-142 (FAA)

# VOR/DME RWY 16R

EVERETT/SNOHOMISH COUNTY (PAINE FIELD) (P.A.E.)

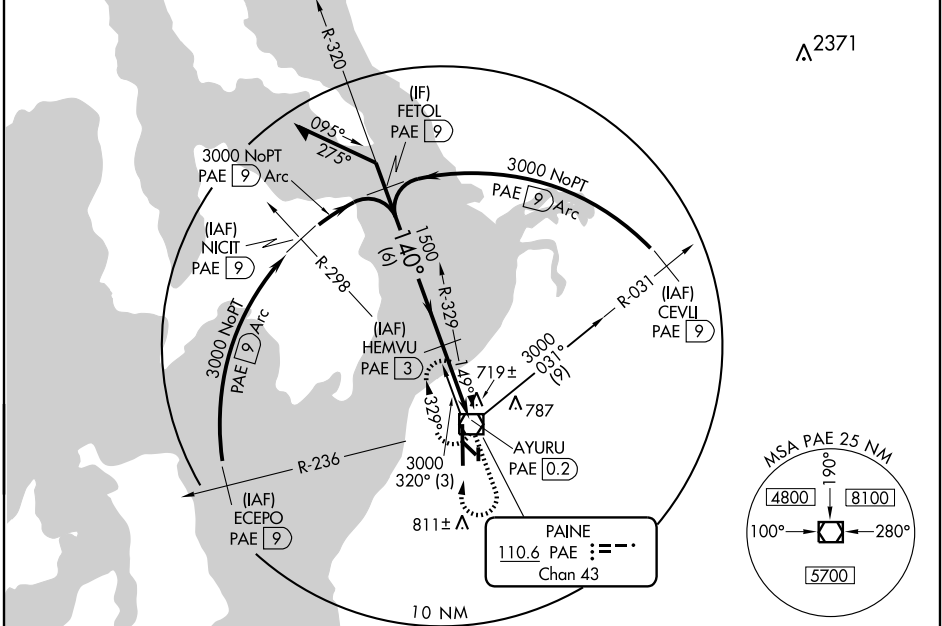
VOR/DME PAE <b>110.6</b> Chan <b>43</b>	APP CRS <b>140°</b>	Rwy Idg TDZE Apt Elev	<b>9010</b> <b>565</b> <b>606</b>
---	------------------------	-----------------------------	---

**▼** For inoperative MALS, increase S-16R Cat. D visibility to RVR 6000.



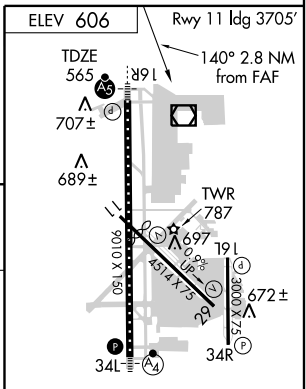
**MISSED APPROACH:** Climb to 1700 then climbing right turn to 2000 direct PAE VOR/DME and hold.

ATIS <b>128.65</b>	SEATTLE CENTER <b>128.5 306.9</b>	PAINE TOWER ★ (E of Rwy 16L-34R) (W of Rwy 16R-34L) <b>120.2 256.7 132.95 (CTAF) 256.7</b>	GND CON <b>121.8 339.8</b>	CLNC DEL <b>126.75</b>	UNICOM <b>122.95</b>
-----------------------	--------------------------------------	--	-------------------------------	---------------------------	-------------------------



NW-1, 22 OCT 2009 to 19 NOV 2009

NW-1, 22 OCT 2009 to 19 NOV 2009



Remain within 10 NM	HEMVU PAE 3	1700	2000	PAE 110.6
2000	320°	1500	2.98° TCH 56	1.4 NM
	140°			1.2 NM
				VOR/DME AYURU PAE 0.2

CATEGORY	A	B	C	D
S-16R	980/24	415 (400-½)	980/40 415 (400-¾)	980/50 415 (400-1)
CIRCLING	1100-1	494 (500-1)	1100-1½ 494 (500-1½)	1180-2 574 (600-2)

HIRL Rwy 16R-34L  
REIL Rws 16L and 34R  
MIRL Rws 11-29 and 16L-34R

Knots	60	90	120	150	180
Min:Sec					

EVERETT, WASHINGTON  
Orig 07298

EVERETT/SNOHOMISH COUNTY (PAINE FIELD) (P.A.E.)  
47°54'N - 122°17'W  
**VOR/DME RWY 16R**