

RNAV (GPS) RWY 16R

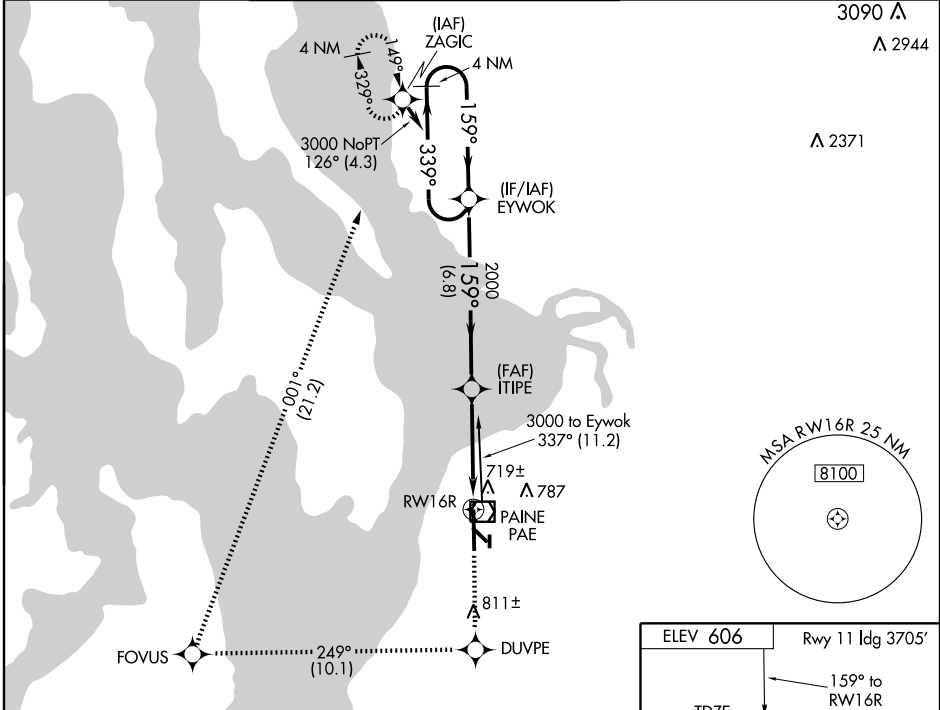
EVERETT/SNOHOMISH COUNTY (PAINE FIELD) (P.A.E.)

WAAS CH 60911 W16A	APP CRS 159°	Rwy Idg TDZE Apt Elev 9010 565 606
---------------------------------	------------------------	--

▽ For inoperative MALS increase LPV visibility to RVR 5000 all Cats. Increase LNAV Cat. D visibility to RVR 6000. DME/DME RNP-0.3 NA. Baro-VNAV NA below -16°C (4°F).

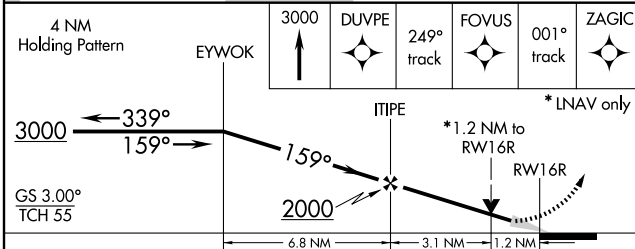
MALS R
AS
MISSED APPROACH: Climb to 3000 direct DUVPE and via 249° track to FOVUS and via 001° track to ZAGIC and hold.

ATIS 128.65	SEATTLE CENTER 128.5 306.9	PAINE TOWER★ (E of Rwy 16L-34R) (W of Rwy 16R-34L) 120.2 256.7 132.95 (CTAF) 256.7	GND CON 121.8 339.8	CLNC DEL 126.75	UNICOM 122.95
-----------------------	--------------------------------------	---	-------------------------------	---------------------------	-------------------------



NW-1, 22 OCT 2009 to 19 NOV 2009

NW-1, 22 OCT 2009 to 19 NOV 2009



CATEGORY	A	B	C	D
LPV DA	830/24 265 (300-½)			
LNAV/VNAV DA	1000/50 435 (400-1)			
LNAV MDA	980/24 415 (400-½)	980/40 415 (400-¾)	980/50 415 (400-1)	
CIRCLING	1100-1½ 494 (500-1½)		1180-2 574 (600-2)	

