


LOC I-PAE 109.3	APP CRS 159°	Rwy ldg TDZE Apt Elev	9010 570 606
---------------------------	------------------------	-----------------------------	---

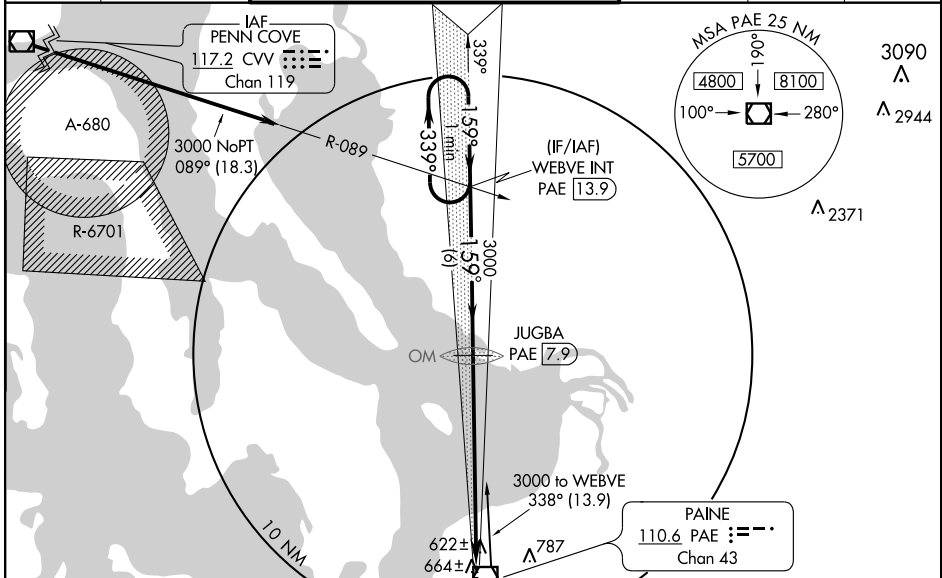
ILS or LOC/DME RWY 16R

EVERETT/SNOHOMISH COUNTY (PAINE FIELD) (P.A.E.)

⚠ DME from PAE VOR/DME. Simultaneous reception of I-PAE and PAE DME required. When local altimeter setting not received, use Seattle-Tacoma Intl altimeter setting: increase DA to 858 feet; increase all MDA 100 feet, increase S-LOC 16R Cat C visibility to RVR 5000, Cat D to RVR 6000. For inoperative MALSRR when using Seattle-Tacoma Intl altimeter setting, increase S-ILS 16R all Cats visibilities to RVR 5000.

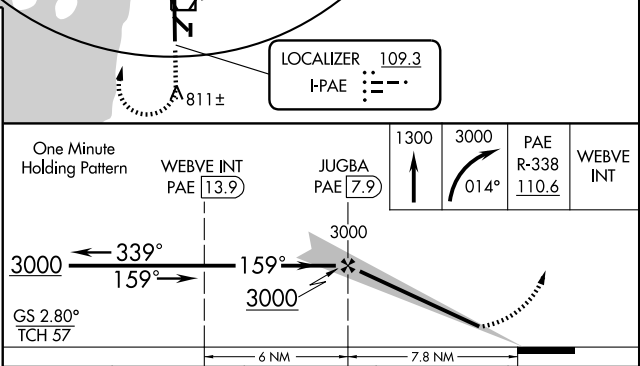
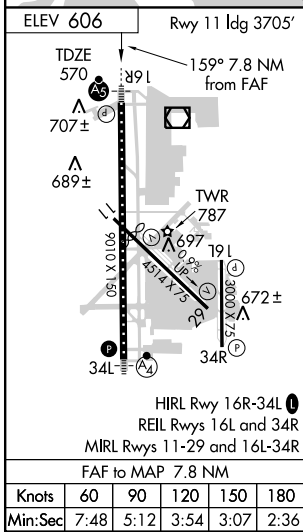
MALSRR  MISSED APPROACH: Climb to 1300 then climbing right turn to 3000 via heading 014° and PAE VOR/DME R-338 to WEBVE INT/PAE 13.9 DME and hold.

ATIS 128.65	SEATTLE CENTER 128.5 306.9	PAINE TOWER* (E of Rwy 16L-34R) (W of Rwy 16R-34L) 120.2 256.7 132.95 (CTAF) 256.7		GND CON 121.8 339.8	CLNC DEL 126.75	UNICOM 122.95
-----------------------	--------------------------------------	---	--	-------------------------------	---------------------------	-------------------------



NW-1, 22 OCT 2009 to 19 NOV 2009

NW-1, 22 OCT 2009 to 19 NOV 2009



CATEGORY	A	B	C	D
S-ILS 16R	786/24 216 (200-½)			
S-LOC 16R	1020/24	450 (500-½)	1020/40 450 (500-¾)	1020/50 450 (500-1)
CIRCLING	1100-1	494 (500-1)	1100-1½ 494 (500-1½)	1160-2 554 (600-2)