

EUGENE, OREGON

AL-140 (FAA)

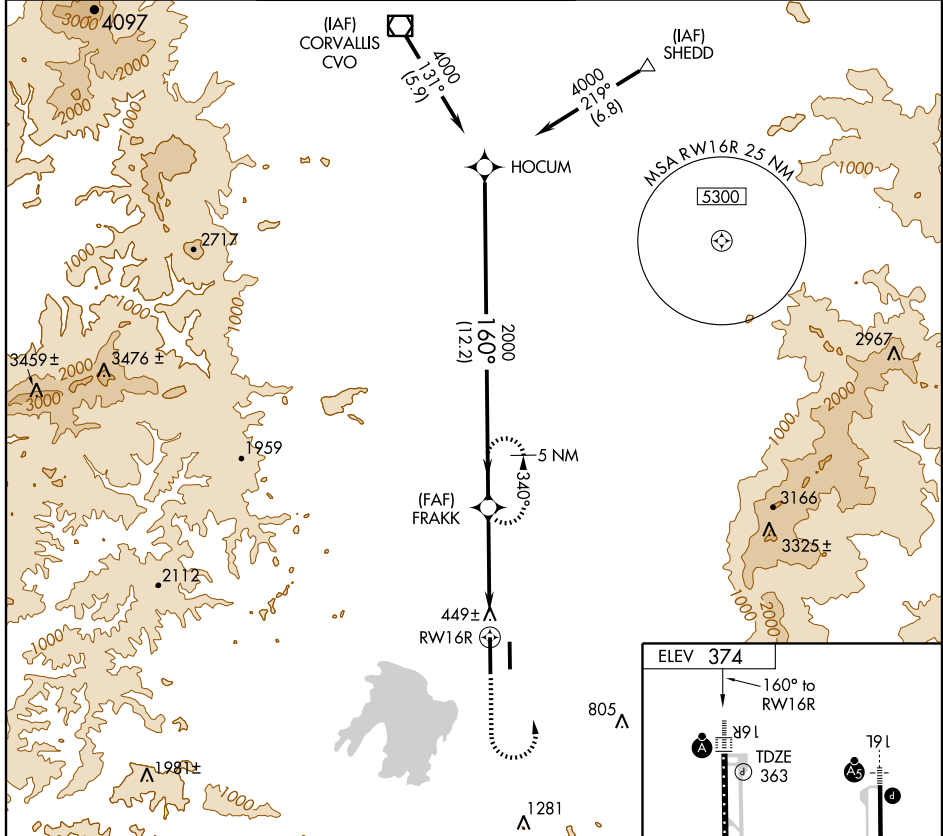
GPS RWY 16R

EUGENE/MAHLON SWEET FIELD (EUG)

APP CRS	Rwy Idg	8009
160°	TDZE	363
	Apt Elev	374

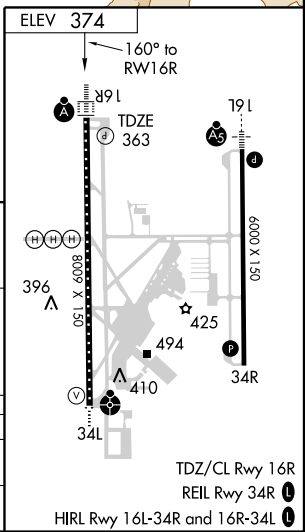
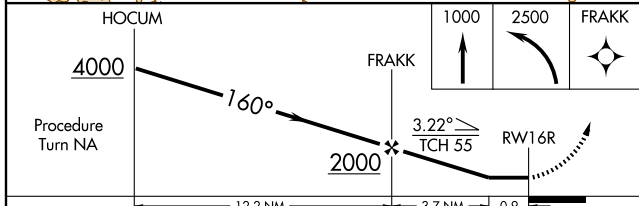
NA Inoperative table does not apply to S-16R Cat D.	ALSF-2 	MISSED APPROACH: Climb to 1000 then climbing left turn to 2500 direct FRAKK WP and hold.

ATIS 125.225	CASCADE APP CON 119.6 348.7	EUGENE TOWER * 118.9 (CTAF) 0 371.9 (Rwy 16R/34L) 124.15 371.9 (Rwy 16L/34R)	GND CON 121.7 269.5	CLNC DEL 121.7 269.5	UNICOM 122.95
------------------------	---------------------------------------	---	-------------------------------	--------------------------------	-------------------------



NW-1, 22 OCT 2009 to 19 NOV 2009

NW-1, 22 OCT 2009 to 19 NOV 2009



CATEGORY	A	B	C	D
S-16R	700/24 337 (400-½)			700/50 337 (400-1)
CIRCLING	800-1 426 (500-1)	840-1 466 (500-1)	840-1½ 466 (500-½)	940-2 566 (600-2)

EUGENE, OREGON
Orig-C 08213

44°07'N-123°13'W

EUGENE/MAHLON SWEET FIELD (EUG)

GPS RWY 16R

TDZ/CL Rwy 16R
REIL Rwy 34R
HIRL Rwy 16L-34R and 16R-34L