

EUGENE SEVEN DEPARTURE

SL-140 (FAA)

EUGENE/MAHLON SWEET FIELD (EUG)
EUGENE, OREGON

ATIS 125.225
 GND CON
 121.7 269.5
 EUGENE TOWER *
 118.9 (CTAF) 371.9 (Rwy 16R-34L)
 124.15 371.9 (Rwy 16L-34R)
 CASCADE DEP CON
 119.6 348.7

BATTLEGROUND
 116.6 BTG
 Chan 113
 N45°44.87' - W122°35.49'
 L-1, H-1

CORVALLIS
 115.4 CVO
 Chan 101
 N44°29.97' - W123°17.62'
 L-1

NEWBERG
 117.4 UBG
 Chan 121
 N45°21.19' - W122°58.69'
 L-1, H-1

NEWPORT
 117.1 ONP
 Chan 118
 N44°34.52' - W124°03.64'
 L-1, H-1

TAKE-OFF OBSTACLE NOTES

Rwy 16R: Tree 1992' from DER, 832' left of centerline, 50' AGL/419' MSL.
 Rwy 16L: Multiple trees and power poles beginning 872' from DER, 35' right of centerline, up to 50' AGL/437' MSL.
 Multiple trees and power poles beginning 890' from DER, 77' left of centerline, up to 50' AGL/433' MSL.
 Rwy 34R: Multiple trees beginning 2869' from DER, 186' right of centerline, up to 50' AGL/447' MSL.
 Tree 2535' from DER, 652' left of centerline, 50' AGL/428' MSL.

NORTH BEND
 112.1 OTH
 Chan 58
 N43°24.93' - W124°10.11'
 L-1

TAKE-OFF MINIMUMS

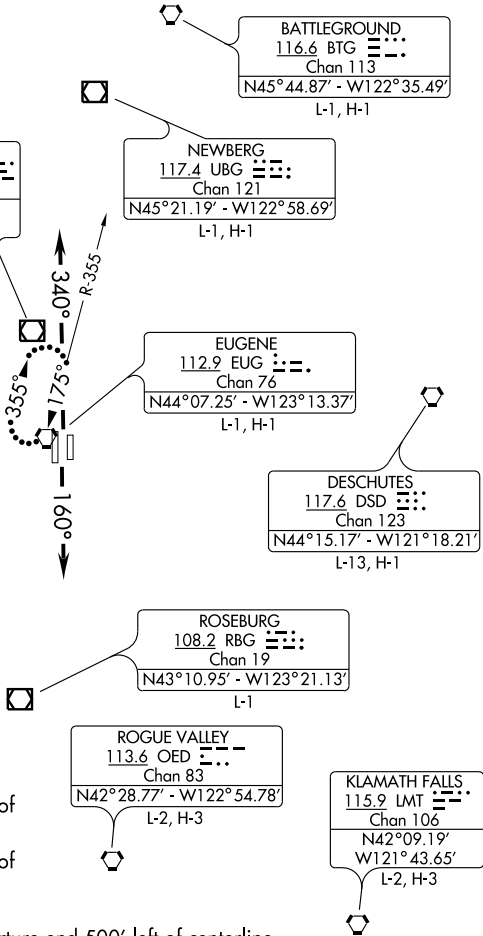
Rwy 16L/16R: Standard with minimum climb of 305' per NM to 6000.
 Rwy 34L/34R: Standard with minimum climb of 320' per NM to 6000.

NOTE: Aircraft taxiing beyond Rwy 16R departure end 500' left of centerline.

NOTE: Chart not to scale.

NW-1, 22 OCT 2009 to 19 NOV 2009

NW-1, 22 OCT 2009 to 19 NOV 2009



DEPARTURE ROUTE DESCRIPTION

TAKE-OFF RUNWAYS 16L and 16R: Climb via heading 160° (or ATC assigned heading) for vectors to assigned route/fix

TAKE-OFF RUNWAYS 34L and 34R: Climb via heading 340° (or ATC assigned heading) for vectors to assigned route/fix

. . . . maintain 9000 or assigned altitude, expect filed altitude/flight level five minutes after departure.

LOST COMMUNICATIONS: If not in contact with ATC after reaching 3000', continue climb to assigned altitude direct EUG VORTAC, climb in EUG VORTAC holding pattern (hold N, RT, 175° inbound) to cross EUG VORTAC at or above MEA before proceeding enroute.