

VOR/DME RWY 24

ERIE INTL/TOM RIDGE FIELD (ERI)

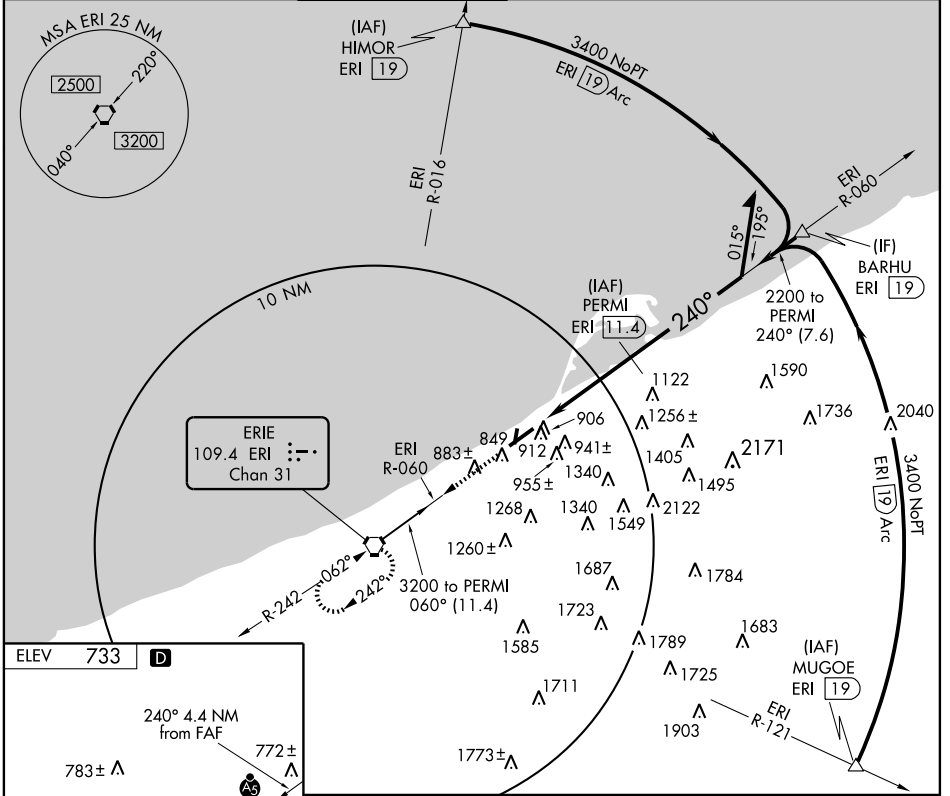
VORTAC ERI 109.4 Chan 31	APP CRS 240°	Rwy Idg TDZE 732 Apt Elev 733	6010 732 733
--	------------------------	---	---

▼ Circling to Rwy 20 NA at night. When local altimeter setting not received, use Ashtabula, OH altimeter setting and increase all MDA 100 ft and S-24 Cats. C/D and Circling Cat. C visibilities ¼ mile and Circling Cat. D visibility ½ mile.

▲ MALSR

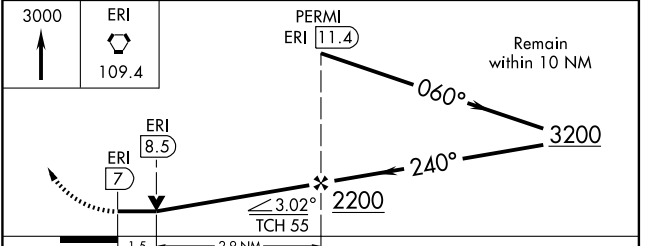
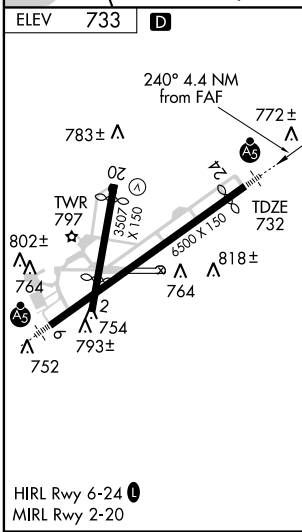
MISSED APPROACH: Climb to 3000 direct ERI VORTAC and hold.

ATIS 120.35	ERIE APP CON 121.0	ERIE TOWER * 118.1 (CTAF) 0 257.8	GND CON 121.9	CLNC DEL 126.8	UNICOM 122.95
-----------------------	------------------------------	---	-------------------------	--------------------------	-------------------------



NE-4, 22 OCT 2009 to 19 NOV 2009

NE-4, 22 OCT 2009 to 19 NOV 2009



CATEGORY	A	B	C	D
S-24	1260-½ 528 (600-½)		1260-1 528 (600-1)	1260-1¼ 528 (600-1¼)
CIRCLING	1340-1 607 (700-1)		1340-1¾ 607 (700-1¾)	1380-2 647 (700-2)