

# VOR RWY 6

ERIE INTL/TOM RIDGE FIELD (ERI)

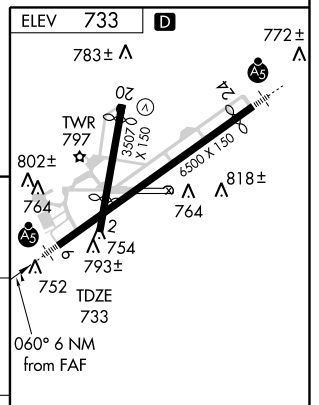
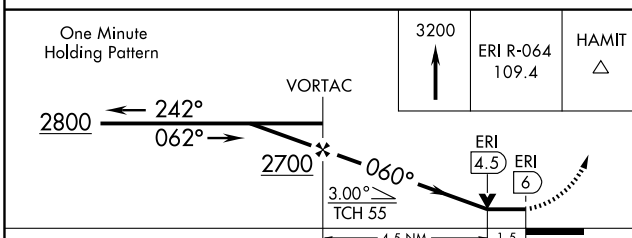
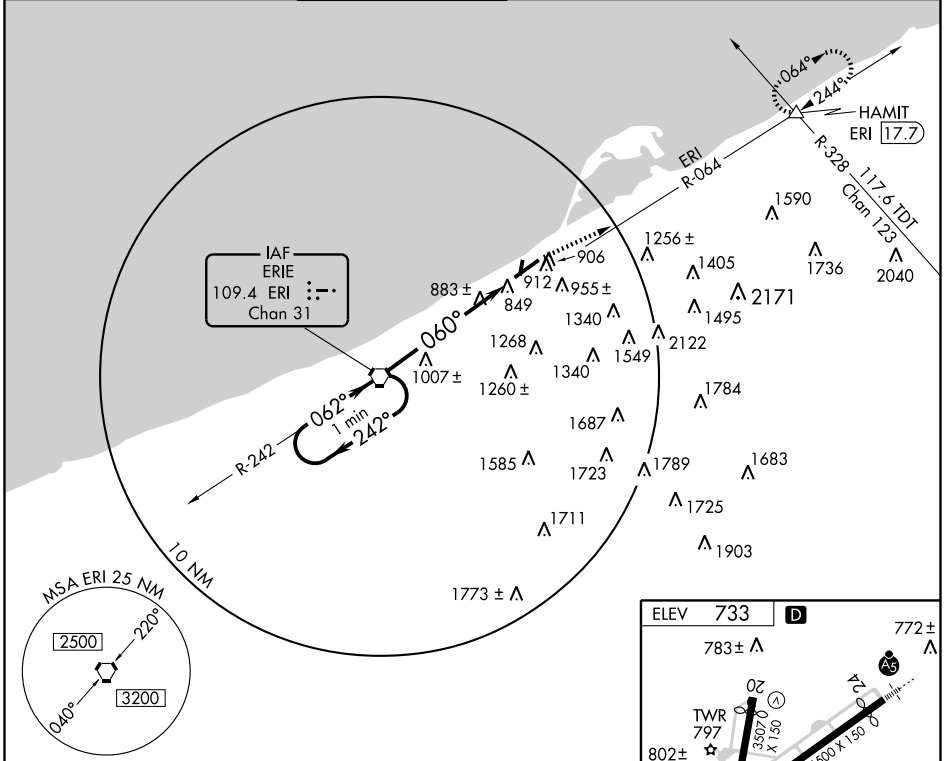
VORTAC ERI <b>109.4</b> Chan <b>31</b>	APP CRS <b>060°</b>	Rwy Idg <b>6500</b> TDZE <b>733</b> Apt Elev <b>733</b>
--	------------------------	---

⚠ Circling to Rwy 20 NA at night. For inoperative MALS, increase Cats. A and B visibility to RVR 5000. Visibility reduction by helicopters NA. When local altimeter setting not received, use Ashtabula, OH altimeter setting and increase all MDA 100 ft and S-6 Cats. C/D and Circling Cat. C visibilities ¼ mile, and Circling Cat. D visibility ½ mile. For inoperative MALS, when using Ashtabula altimeter setting, increase S-6 Cats. A/B visibility to RVR 5000. VDP NA when using Ashtabula altimeter setting.

MALS R

MISSED APPROACH: Climb to 3200 via ERI R-064 to HAMIT INT/ ERI 17.7 DME and hold.

ATIS <b>120.35</b>	ERIE APP CON <b>121.0</b>	ERIE TOWER * <b>118.1</b> (CTAF) <b>257.8</b>	GND CON <b>121.9</b>	CLNC DEL <b>126.8</b>	UNICOM <b>122.95</b>
-----------------------	------------------------------	--	-------------------------	--------------------------	-------------------------



CATEGORY	A	B	C	D
S-6	1260/40 527 (600-¾)	1260/50 527 (600-1)	1260/60 527 (600-1¼)	1260/60 527 (600-1¼)
CIRCLING	1340-1 607 (700-1)	1340-1¾ 607 (700-1¾)	1380-2 647 (700-2)	

HIRL Rwy 6-24 MIRL Rwy 2-20

FAF to MAP 6 NM

Knots	60	90	120	150	180
Min:Sec	6:00	4:00	3:00	2:24	2:00

# VOR RWY 6

NE-4, 22 OCT 2009 to 19 NOV 2009

NE-4, 22 OCT 2009 to 19 NOV 2009