


# RNAV (GPS) RWY 24

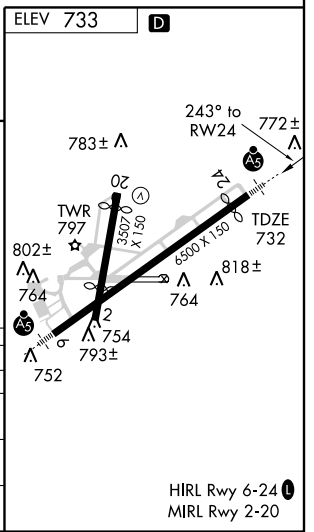
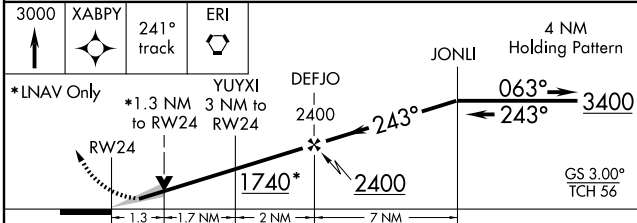
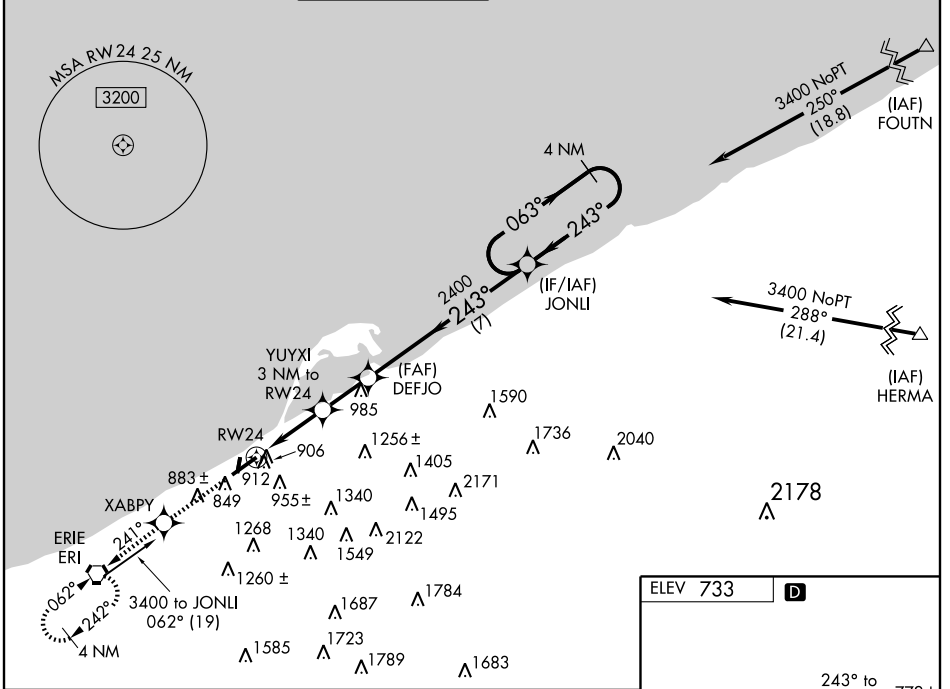
ERIE INTL/TOM RIDGE FIELD (ERI)

WAAS CH <b>86812</b> <b>W24A</b>	APP CRS <b>243°</b>	Rwy Idg <b>6010</b> TDZE <b>732</b> Apt Elev <b>733</b>
--	------------------------	---

**⚠** Circling to Rwy 20 NA at night. For uncompensated Baro-VNAV systems, LNAV/VNAV NA below -16°C (4°F) or above 47°C (116°F). DME/DME RNP-0.3 NA. When local altimeter setting not received, use Ashtabula, OH altimeter setting and increase all DA/MDA 100 feet and LNAV/VNAV all Cats., LNAV Cats. C/D, and Circling Cat. C visibilities ¼ mile and Circling Cat. D visibility ½ mile. For inoperative MALSRL when using Ashtabula altimeter setting, increase LPV all Cats visibility to 1 mile. Baro-VNAV and VDP NA when using Ashtabula altimeter setting.

**MALSRL**  
  
**MISSED APPROACH:**  
 Climb to 3000 direct XABPY and via 241° track to ERI VORTAC and hold, continue climb-in-hold to 3000.

ATIS <b>120.35</b>	ERIE APP CON <b>121.0</b>	ERIE TOWER * <b>118.1 (CTAF) 257.8</b>	GND CON <b>121.9</b>	CLNC DEL <b>126.8</b>	UNICOM <b>122.95</b>
-----------------------	------------------------------	---	-------------------------	--------------------------	-------------------------



CATEGORY	A	B	C	D
LPV DA		935-1/2	203 (300-1/2)	
LNAV/VNAV DA		1207-1 1/4	475 (500-1 1/4)	
LNAV MDA	1200-1/2	468 (500-1/2)	1200-3/4	1200-1
			468 (500-3/4)	468 (500-1)
CIRCLING	1340-1	607 (700-1)	1340-1 3/4	1380-2
			607 (700-1 3/4)	647 (700-2)

NE-4, 22 OCT 2009 to 19 NOV 2009

NE-4, 22 OCT 2009 to 19 NOV 2009