

ILS or LOC RWY 6

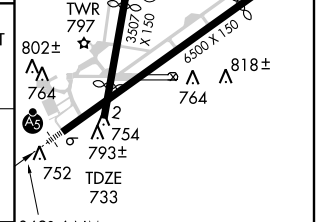
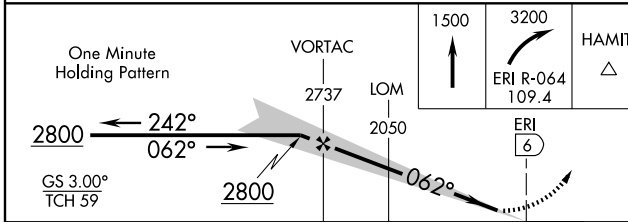
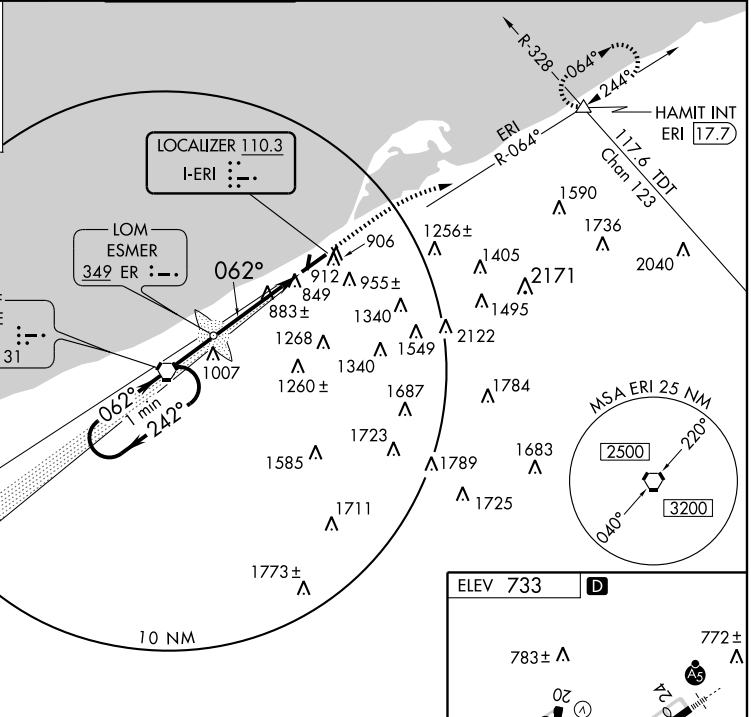
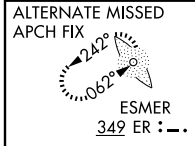
ERIE INTL/TOM RIDGE FIELD (ERI)

LOC I-ERI 110.3	APP CRS 062°	Rwy Idg TDZE Apt Elev	6500 733 733
---------------------------	------------------------	-----------------------------	---

⚠ Circling to Rwy 20 NA at night. Inoperative table does not apply to S-ILS 6.
⚠ For inoperative MALS/R, increase S-LOC 6 Cats. A/B visibility to RVR 5000.
 Visibility reduction by helicopters NA. When local altimeter setting not received, use Ashtabula, OH altimeter setting and increase all DA/MDA 100 feet and S-LOC 6 Cats. C/D and Circling Cat. C visibilities ¼ mile and Circling Cat. D visibility ½ mile.
 For inoperative MALS/R, when using Ashtabula altimeter setting, increase S-ILS 6 all Cats. visibility to RVR 6000 and S-LOC 6 Cats. A/B to RVR 5000.

MALS/R
 MISSED APPROACH:
 Climb to 1500 then climbing right turn to 3200 via ERI VORTAC R-064 to HAMIT INT/ERI 17.7 DME and hold.

ATIS 120.35	ERIE APP CON 121.0	ERIE TOWER * 118.1 (CTAF) 0 257.8	GND CON 121.9	CLNC DEL 126.8	UNICOM 122.95
-----------------------	------------------------------	---	-------------------------	--------------------------	-------------------------



CATEGORY	A	B	C	D
S-ILS 6	983/40 250 (300-¾)			
S-LOC 6	1160/40 427 (500-¾)		1160/50 427 (500-1)	
CIRCLING	1340-1 607 (700-1)		1340-1¾ 607 (700-1¾)	
			1380-2 647 (700-2)	

FAF to MAP 6 NM					
Knots	60	90	120	150	180
Min:Sec	6:00	4:00	3:00	2:24	2:00

NE-4, 22 OCT 2009 to 19 NOV 2009

NE-4, 22 OCT 2009 to 19 NOV 2009