

# RNAV (GPS) RWY 3

EPHRATA MUNI (EPH)

WAAS CH <b>50208</b> <b>W03A</b>	APP CRS <b>027°</b>	Rwy Idg <b>5500</b> TDZE <b>1269</b> Apt Elev <b>1276</b>
--	------------------------	---

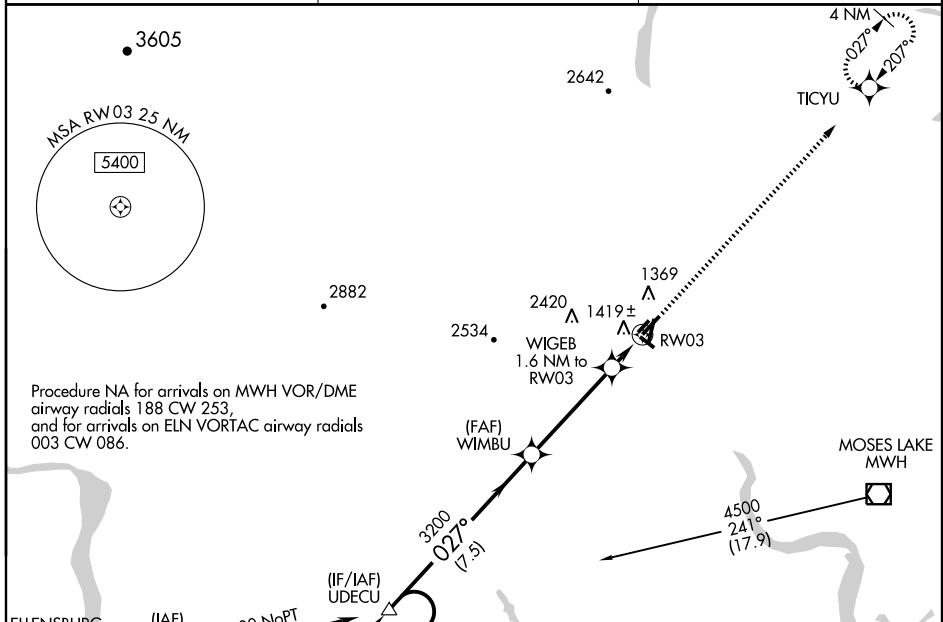
**⚠** For uncompensated Baro-VNAV systems, LNAV/VNAV NA below -17°C (2°F) or above 46°C (114°F). DME/DME RNP-0.3 NA. VDP and Baro-VNAV NA when using Moses Lake/Grant County Intl altimeter setting. When local altimeter setting not received, use Moses Lake/Grant County Intl altimeter setting and increase all DA/MDA 40 feet and LNAV Cat D visibility ¼ mile.

MISSED APPROACH: Climb to 3800 direct TICYU and hold.

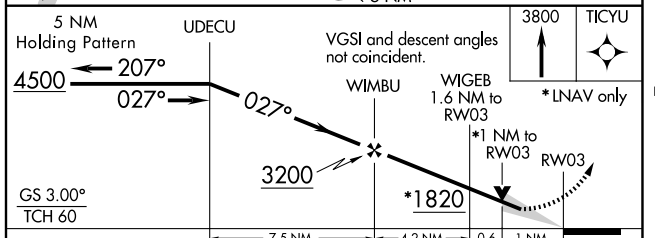
ASOS  
**135.775**

GRANT COUNTY APP CON \*  
**126.4 379.95**

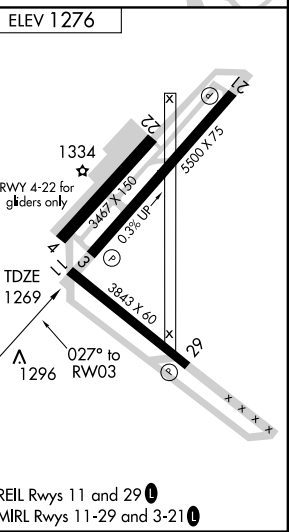
UNICOM  
**122.8 (CTAF)**



Procedure NA for arrivals on MWH VOR/DME airway radials 188 CW 253, and for arrivals on ELN VORTAC airway radials 003 CW 086.



CATEGORY	A	B	C	D
LPV DA		1519-1	250 (300-1)	
LNAV/VNAV DA		1689-1½	420 (500-1½)	
LNAV MDA	1680-1	411 (500-1)	1680-1¼	411 (500-1¼)
CIRCLING	1720-1 444 (500-1)	1740-1 464 (500-1)	1780-1½ 504 (600-1½)	2500-3 1224 (1300-3)



NW-1, 22 OCT 2009 to 19 NOV 2009

NW-1, 22 OCT 2009 to 19 NOV 2009