

RNAV (GPS) RWY 21

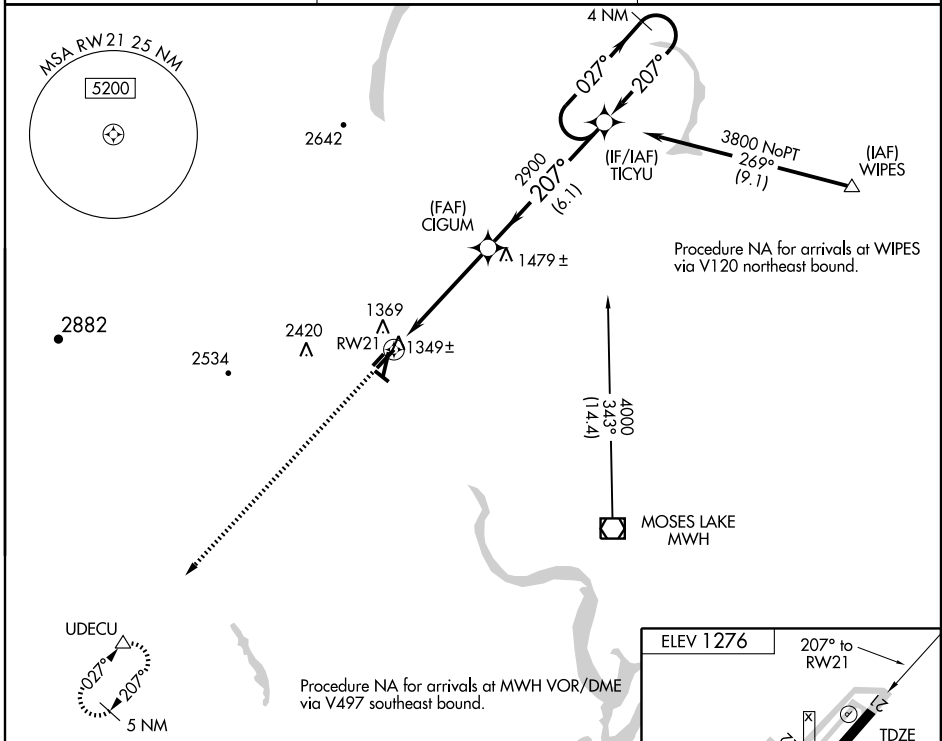
EPHRATA MUNI (EPH)

WAAS CH 82308 W21A	APP CRS 207°	Rwy Idg 5500 TDZE 1276 Apt Elev 1276
---------------------------------	------------------------	---

▼ For uncompensated Baro-VNAV systems, LNAV/VNAV NA below -17°C (2°F) or above 46°C (114°F). DME/DME RNP-0.3 NA. VDP and Baro-VNAV NA when using Moses Lake/Grant County Intl altimeter setting. When local altimeter setting not received, use Moses Lake/Grant County Intl altimeter setting and increase all DA/MDA 40 feet. Increase LNAV Cat. C visibility ¼ mile.

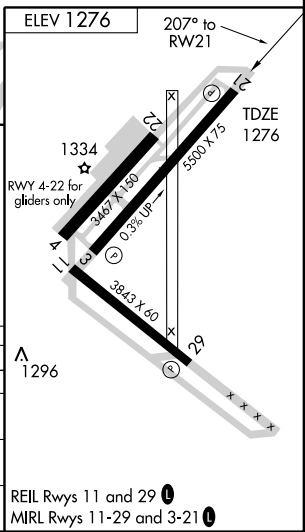
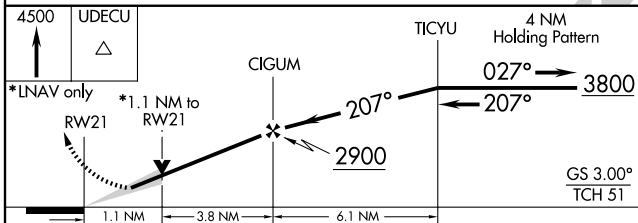
MISSED APPROACH: Climb to 4500 direct UDECU and hold.

ASOS 135.775	GRANT COUNTY APP CON * 126.4 379.95	UNICOM 122.8 (CTAF)
------------------------	---	-------------------------------



NW-1, 22 OCT 2009 to 19 NOV 2009

NW-1, 22 OCT 2009 to 19 NOV 2009



CATEGORY	A	B	C	D
LPV DA		1526-1	250 (300-1)	
LNAV/VNAV DA		2169-4	893 (900-4)	
LNAV MDA	1660-1	384 (400-1)		1660-1¼ 384 (400-1¼)
CIRCLING	1720-1 444 (500-1)	1740-1 464 (500-1)	1780-1½ 504 (600-1½)	2500-3 1224 (1300-3)