

RNAV (GPS) RWY 17

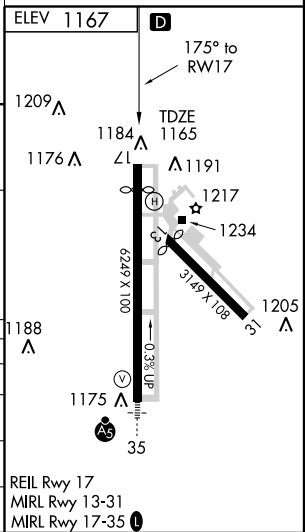
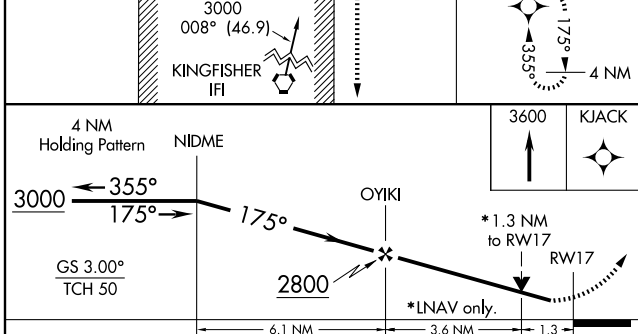
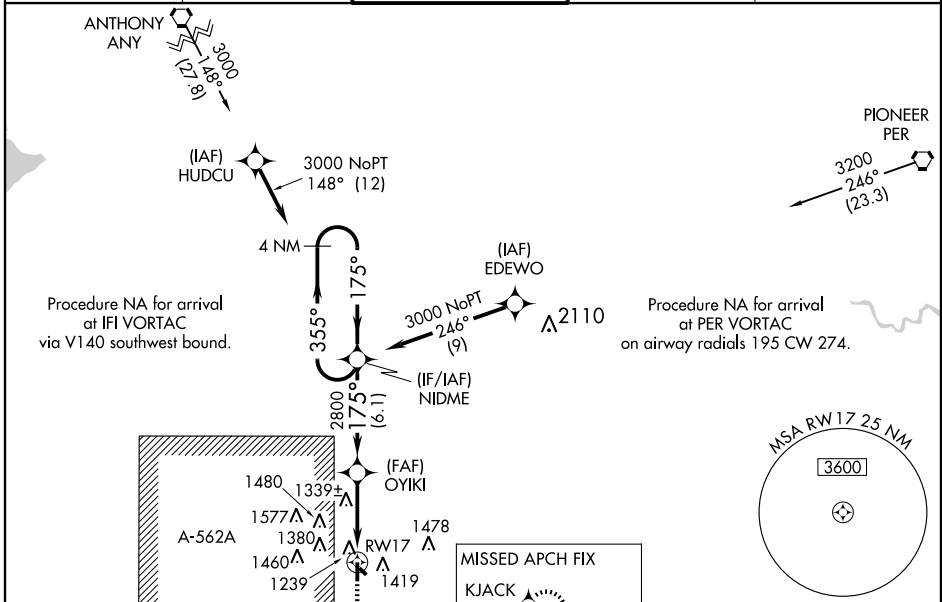
ENID WOODRING RGNL (WDG)

WAAS CH 50213 W17A	APP CRS 175°	Rwy Idg 5638 TDZE 1165 Apt Elev 1167
--	------------------------	---

⚠ For uncompensated Baro-VNAV systems, LNAV/VNAV NA below -17°C (2°F) or above 46°C (114°F). DME/DME RNP-0.3 NA. Visibility reduction by helicopters NA. When local altimeter setting not received, use Guthrie altimeter setting and increase all DA 98 feet and all MDA 100 feet; increase LPV all Cats visibility to 1¼ miles, LNAV/VNAV all Cats visibility to 1¾ miles, LNAV Cat C visibility to 1½ miles, LNAV Cat D visibility to 1¾ miles and Circling Cat C visibility to 1¾ miles. Baro-VNAV and VDP NA when using Guthrie altimeter setting.

⚠ MISSED APPROACH: Climb to 3600 direct KJACK and hold.

AWOS-3 120.625	VANCE APP CON * 119.775 378.8	WOODRING TOWER * 118.9 (CTAF) 0 257.95	GND CON 121.925	UNICOM 122.95
--------------------------	---	--	---------------------------	-------------------------



CATEGORY	A	B	C	D
LPV DA		1415-¾	250 (300-¾)	
LNAV/VNAV DA		1594-1½	429 (500-1½)	
LNAV MDA	1640-1	475 (500-1)	1640-1¼ 475 (500-1¼)	1640-1½ 475 (500-1½)
CIRCLING	1720-1	553 (600-1)	1720-1½ 553 (600-1½)	1720-2 553 (600-2)

SC-1, 22 OCT 2009 to 19 NOV 2009

SC-1, 22 OCT 2009 to 19 NOV 2009