

ENID, OKLAHOMA

# VOR/DME or TACAN RWY 35L

VORTAC END <b>115.4</b> Chan <b>101</b>	APCH CRS <b>003°</b>	Rwy Idg <b>9202</b> TDZE <b>1307</b> Arpt Elev <b>1307</b>
---	-------------------------	--

AL-135 [USAF]

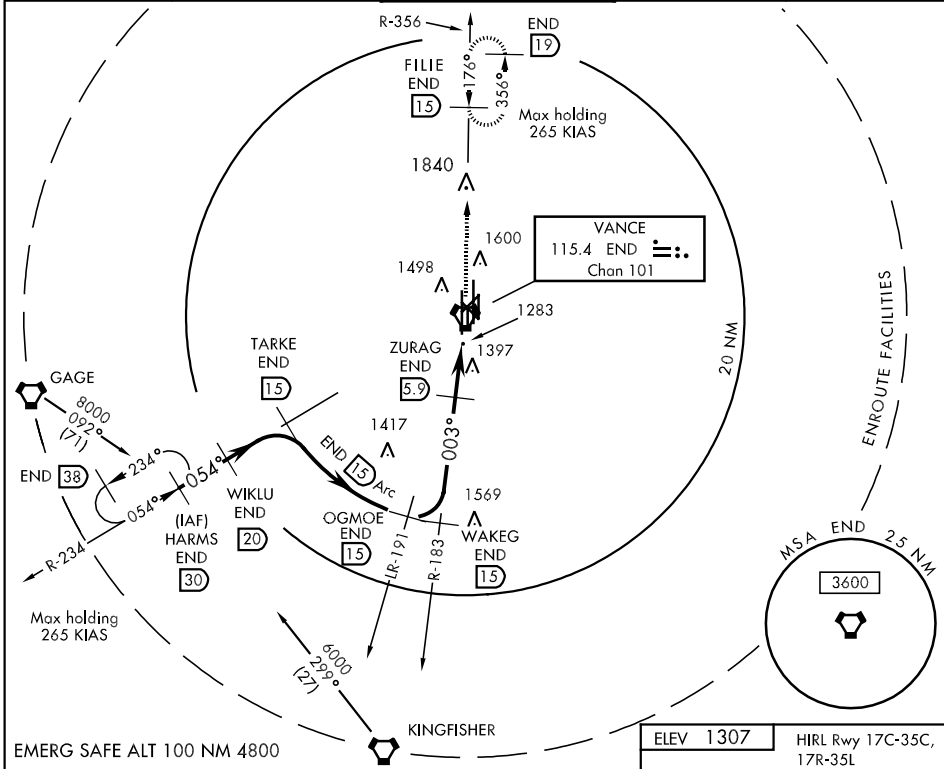
VANCE AFB (KEND)

▼ \* When ALS inop, increase CAT ABC vis to 1 mile, CAT DE vis to 1½ miles.  
\*\* Circling not authorized at night to Rwy 35R.



MISSED APPROACH: Climb to 3000, intercept END VORTAC R-356 to FILE and hold.

ATIS ★ <b>115.4 263.15</b>	VANCE APP CON <b>E125.45 388.2</b> <b>W126.75 378.8</b>	VANCE TOWER ★ <b>124.05 259.1</b>	GND CON <b>121.8 289.4</b>	CLNC DEL <b>225.4</b>
-------------------------------	---	--------------------------------------	-------------------------------	--------------------------



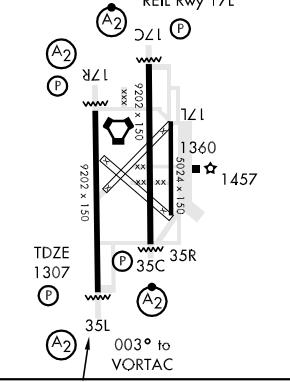
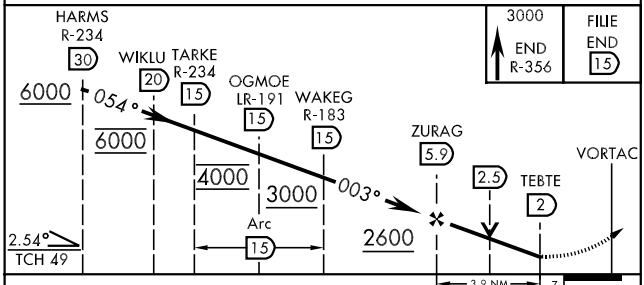
SC-1, 22 OCT 2009 to 19 NOV 2009

SC-1, 22 OCT 2009 to 19 NOV 2009

EMERG SAFE ALT 100 NM 4800

ELEV 1307

HIRL Rwy 17C-35C, 17R-35L  
MIRL Rwy 17L-35R  
REIL Rwy 17L



CATEGORY	A	B	C	D	E
S-35L *	1680-¾	373	(400-¾)	1680-1	373 (400-1)
CIRCLING **	1760-1	453 (500-1)	1760-1½ 453 (500-1½)	1860-2 553 (600-2)	2300-3 993 (1000-3)

ENID, OKLAHOMA  
Orig 09183

36° 20'N-97° 55'W

VANCE AFB (KEND)

# VOR/DME or TACAN RWY 35L