

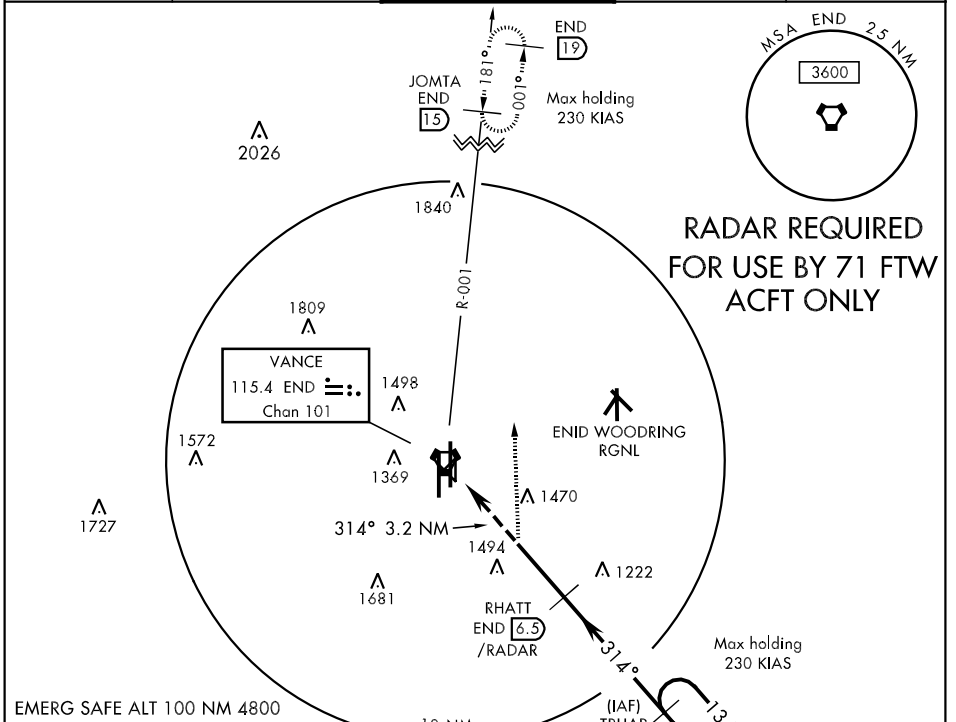
ENID, OKLAHOMA

VOR/DME-A

VORTAC END <b>115.4</b> Chan <b>101</b>	APCH CRS <b>314°</b>	Rwy Idg TDZE NA Arpt Elev <b>1307</b>	AL-135 [USAF]	VANCE AFB (KEND)
---	-------------------------	---	---------------	------------------

▼ \* Circle to remain East of Rwy 35R/17L extended centerline unless directed otherwise by ATC. Circling NA at night to Rwy 35R. MISSED APPROACH: Immediate climbing right turn to 4000 via heading 353° to JOMTA and hold.

ATIS ★ <b>115.4 263.15</b>	VANCE APP CON <b>E125.45 388.2</b> <b>W126.75 378.8</b>	VANCE TOWER ★ <b>124.05 259.1</b>	GND CON <b>121.8 289.4</b>	CLNC DEL <b>225.4</b>
-------------------------------	---	--------------------------------------	-------------------------------	--------------------------



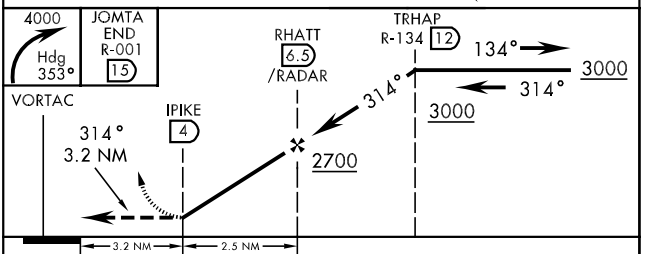
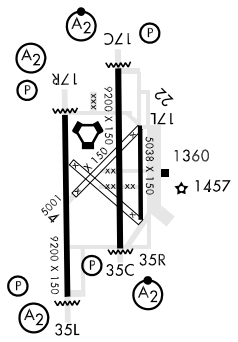
SC-1, 22 OCT 2009 to 19 NOV 2009

SC-1, 22 OCT 2009 to 19 NOV 2009

EMERG SAFE ALT 100 NM 4800

ELEV 1307

HIRL Rwy 17C-35C, 17R-35L  
MIRL Rwy 17L-35R  
REIL Rwy 17L



CATEGORY	A	B	C	D	E
CIRCLING *	1780-4	473 (500-4)	NOT AUTHORIZED		

ENID, OKLAHOMA  
Amdt 2 09043

36°20'N-97°55'W

VANCE AFB (KEND)

VOR/DME-A