

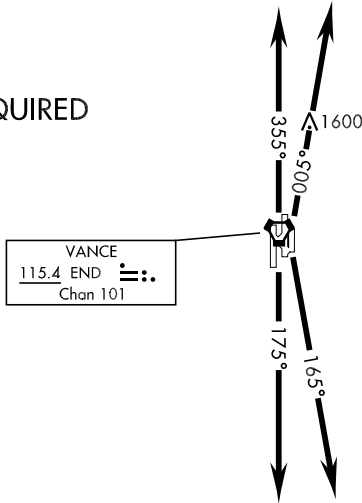
VANCE ONE DEPARTURE

SL-135 [USAF]

ENID, OKLAHOMA

ATIS★ 115.4 263.15
 CLNC DEL
 225.4
 GND CON
 121.8 289.4
 VANCE TOWER★
 124.05 259.1
 VANCE DEP CON
 120.525 306.3

RADAR REQUIRED



SC-1, 22 OCT 2009 to 19 NOV 2009

SC-1, 22 OCT 2009 to 19 NOV 2009



DEPARTURE ROUTE DESCRIPTION

TAKE-OFF RWY 17C/R: Track 175° climbing to 5000 or assigned altitude...

TAKE-OFF RWY 35 C/L: Track 355° climbing to 5000 or assigned altitude...

TAKE-OFF RWY 17L: Track 165° climbing to 5000 or assigned altitude...

TAKE-OFF RWY 35R: Track 005° climbing to 5000 or assigned altitude...

Expect radar vector to assigned route. Expect further clearance to filed altitude 10 minutes after departure.

VANCE ONE DEPARTURE