

VOR RWY 26L

EL PASO INTL (ELP)

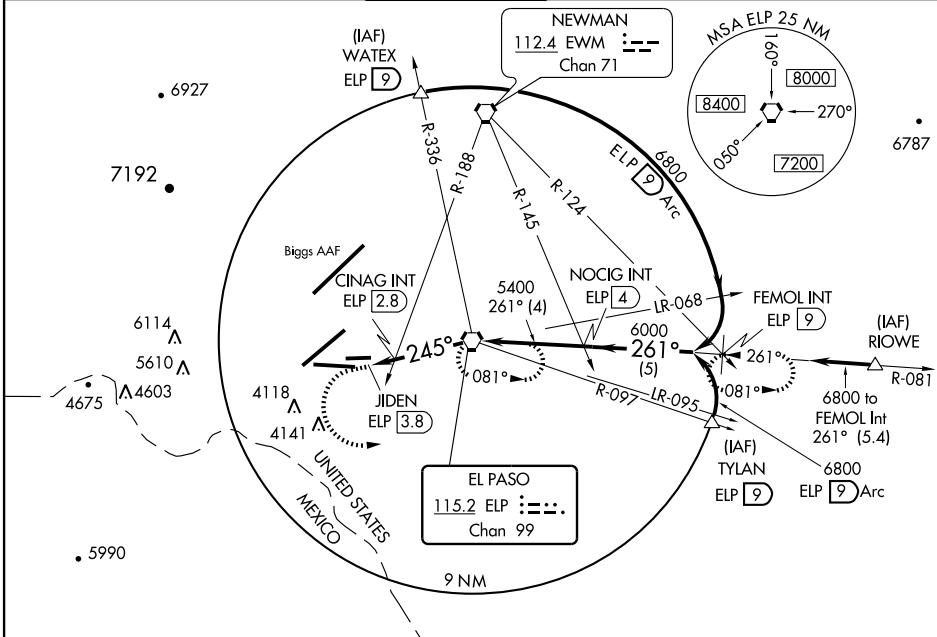
VORTAC ELP 115.2 Chan 99	APP CRS 245°	Rwy Idg TDZE Apt Elev	9025 3959 3959
--	------------------------	-----------------------------	---

⚠ Cat E circling west of airport not authorized.
ASR Inoperative table does not apply to Cat C.



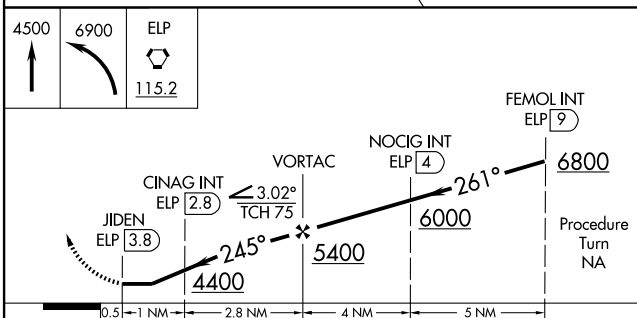
MISSED APPROACH: Climb to 4500 then climbing left turn to 6900 direct ELP VORTAC and hold. (TACAN aircraft climb to 4500 then climbing left turn to 6900 via heading 050° and ELP R-081 to FEMOL 9 DME and hold. Hold east, left turn, 261° inbound.)

ATIS 120.0 254.3	EL PASO APP CON 124.25 298.85	EL PASO TOWER 118.3 239.275	GND CON 121.9 348.6	CLNC DEL 125.0 379.1
----------------------------	---	---------------------------------------	-------------------------------	--------------------------------



SC-3, 22 OCT 2009 to 19 NOV 2009

SC-3, 22 OCT 2009 to 19 NOV 2009



CATEGORY	A	B	C	D	E
S-26L	4400-3/4	442 (500-3/4)	4400-1 1/4 442 (500-1 1/4)	4400-1 1/2	442 (500-1 1/2)
CIRCLING	4420-1	462 (500-1)	4420-1 1/2 462 (500-1 1/2)	4520-2	4660-2 1/2 702 (800-2 1/2)
CINAG MINIMUMS					
S-26L	4320-3/4	362 (400-3/4)	4320-1 1/4	362 (400-1 1/4)	
CIRCLING	4420-1	462 (500-1)	4420-1 1/2	4520-2	4660-2 1/2 702 (800-2 1/2)

