

# RNAV (GPS) RWY 22

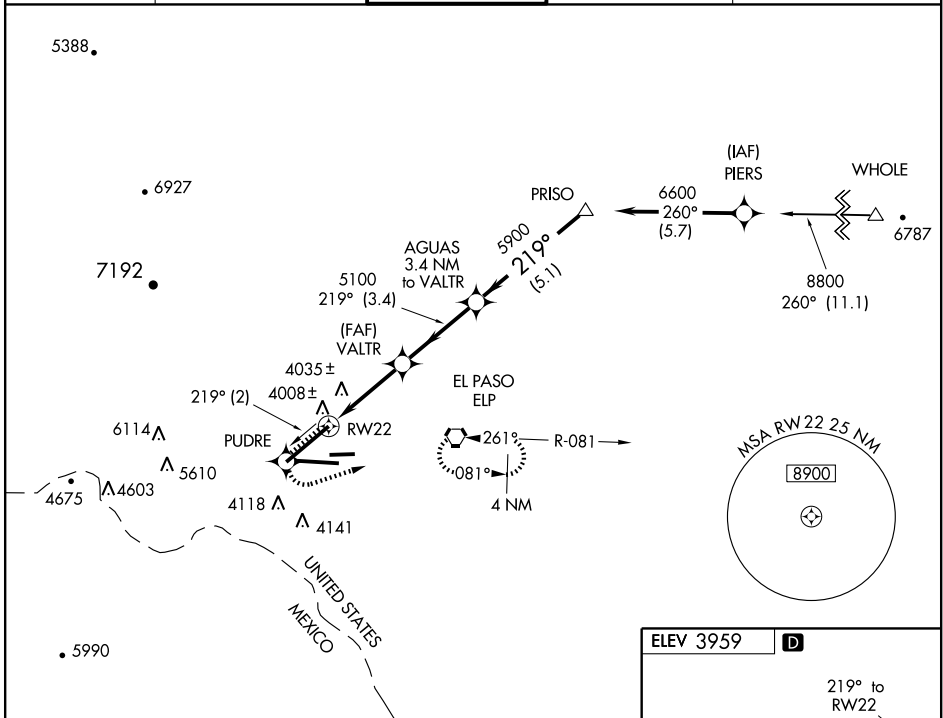
EL PASO INTL (ELP)

APP CRS <b>219°</b>	Rwy Idg <b>12020</b>
	TDZE <b>3949</b>
	Apt Elev <b>3959</b>

**ASR** DME/DME RNP-0.3 not authorized. For uncompensated Baro-VNAV systems, LNAV/VNAV NA below -22°C (-7°F) or above 40°C (104°F). For inoperative MALSRS increase LNAV/VNAV Cat D visibility to RVR 5000 and LNAV Cat D to RVR 6000.

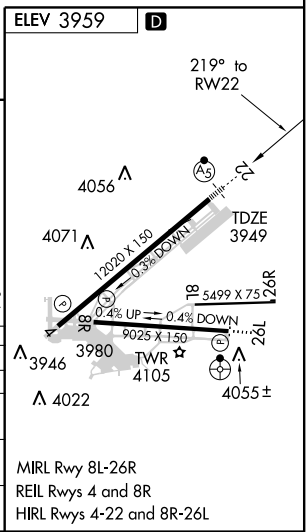
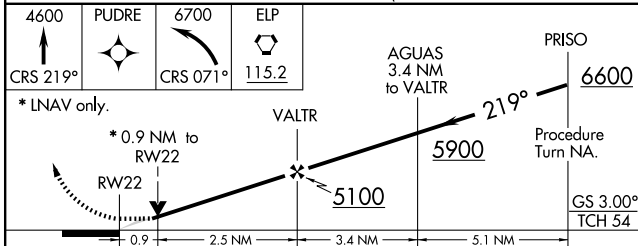
**MALSRS** MISSED APPROACH: Climb to 4600 via 219° course to PUDRE then climbing left turn via 071° course to 6700 to ELP VORTAC and hold.

ATIS <b>120.0 254.3</b>	EL PASO APP CON <b>124.25 298.85</b>	EL PASO TOWER <b>118.3 239.275</b>	GND CON <b>121.9 348.6</b>	CLNC DEL <b>125.0 379.1</b>
----------------------------	---	---------------------------------------	-------------------------------	--------------------------------



SC-3, 22 OCT 2009 to 19 NOV 2009

SC-3, 22 OCT 2009 to 19 NOV 2009



CATEGORY	NA			
GLS PA DA	NA			
LNAV/VNAV DA	4273/24	324 (400-½)	4273/40 324 (400-¾)	
LNAV MDA	4300/24	351 (400-½)	4300/50 351 (400-1)	
CIRCLING	4420-1	462 (500-1)	4420-1½ 462 (500-1½)	4520-2 562 (600-2)