

EL PASO, TEXAS

VORTAC ELP 115.2 Chan 99	APCH CRS 245°	Rwy Idg TDZE Arpt Elev 9025 3956 3959
--	-------------------------	---

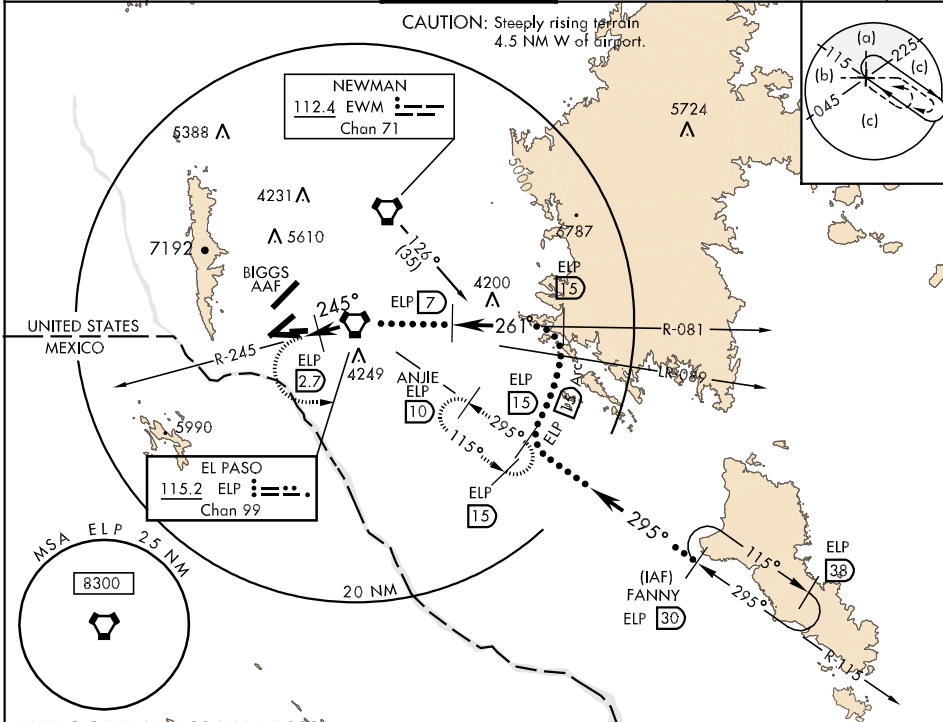
HI-VOR/DME or TACAN RWY 26L

JAL-134 [USAF]

EL PASO INTL (KELP)

<p>▼ * CAUTION: CAT E circling not authorized W of airport.</p>	<p>ODALS</p>	<p>MISSED APPROACH: Climbing left turn to 7000 on hdg 080° to ANJIE 10 DME and hold.</p>
---	--------------	--

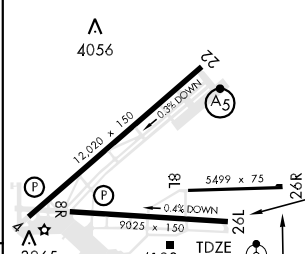
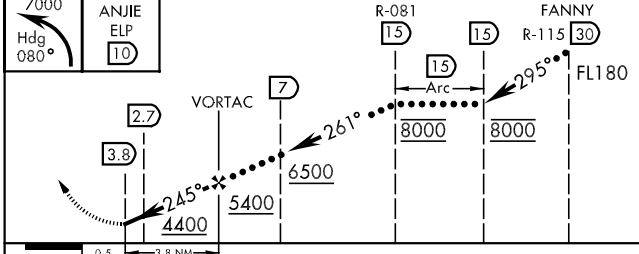
<p>ATIS 120.0 254.3</p>	<p>EL PASO APP CON S of V16 119.15 353.5 N of V16 124.25 298.85</p>	<p>EL PASO TOWER 118.3 239.275</p>	<p>GND CON 121.9 348.6</p>	<p>CLNC DEL 125.0 379.1</p>	<p>ASR</p>
------------------------------------	---	---	---------------------------------------	--	------------



SC-3, 22 OCT 2009 to 19 NOV 2009

SC-3, 22 OCT 2009 to 19 NOV 2009

EMERG SAFE ALT 100 NM 16,000 ELEV 3959



CATEGORY	C	D	E
S-26L	4300-3/4	344 (400-3/4)	4300-1 344 (400-1)
CIRCLING *	4460-1 1/2 504 (600-1 1/2)	4520-2 564 (600-2)	4620-2 1/4 664 (700-2 1/4)
S-ASR 26L	4380-1 1/4 424 (500-1 1/4)		

MIRL Rwy 8L-26R
REIL Rwy 4, 8R
HIRL Rwy 4-22 and 8R-26L

245° 4.3 NM from VORTAC

EL PASO, TEXAS
Amdt 2 09127

31° 48' N-106° 23' W

EL PASO INTL (KELP)

HI-VOR/DME or TACAN RWY 26L