


RNAV (GPS) RWY 6

ELMIRA/CORNING RGNL (ELM)

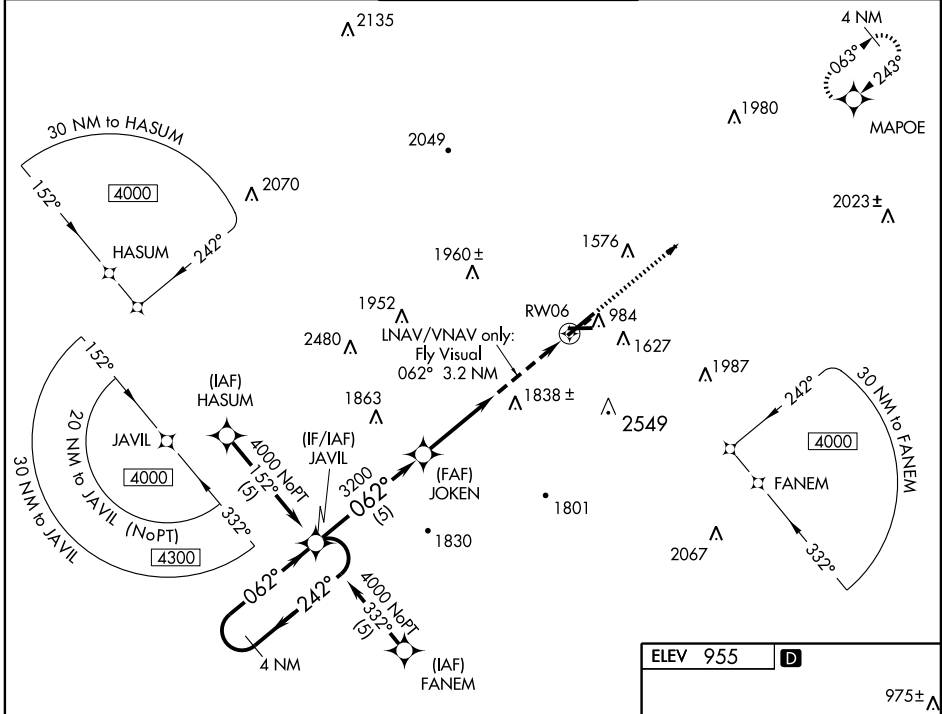
APP CRS	Rwy Idg	6999
062°	TDZE	944
	Apt Elev	955

▼ Inoperative table does not apply to LNAV/VNAV.
▲ NA GPS or RNP-0.3 required. DME/DME RNP-0.3 NA.
 Baro-VNAV NA below -16°C (4°F).

MALSR 

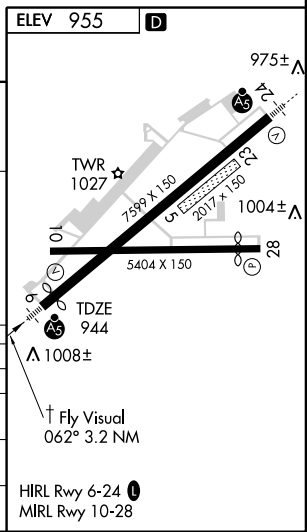
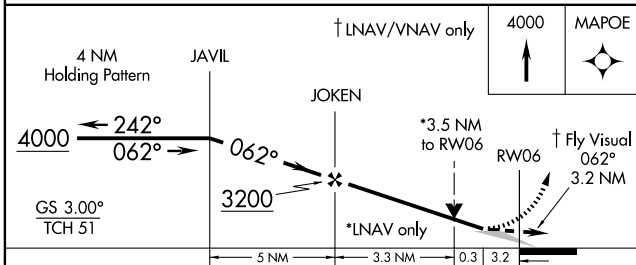
MISSED APPROACH: Climb to 4000 direct MAPOE WP and hold.

ATIS 125.475	ELMIRA APP CON ★ 119.45 257.8	ELMIRA TOWER ★ 121.1 (CTAF) 257.8	GND CON 121.9	UNICOM 122.95
------------------------	---	---	-------------------------	-------------------------



NE-2, 22 OCT 2009 to 19 NOV 2009

NE-2, 22 OCT 2009 to 19 NOV 2009



CATEGORY	A	B	C	D
GLS PA DA	NA			
LNAV/VNAV DA	2020-2	1076 (1100-2)	2020-3	1076 (1100-3)
LNAV MDA	2100-¾ 1156 (1200-¾)	2100-1 1156 (1200-1)	2100-2½	1156 (1200-2½)
CIRCLING	2100-2 1145 (1200-2)	2120-2 1165 (1200-2)	2140-3	1185 (1200-3)