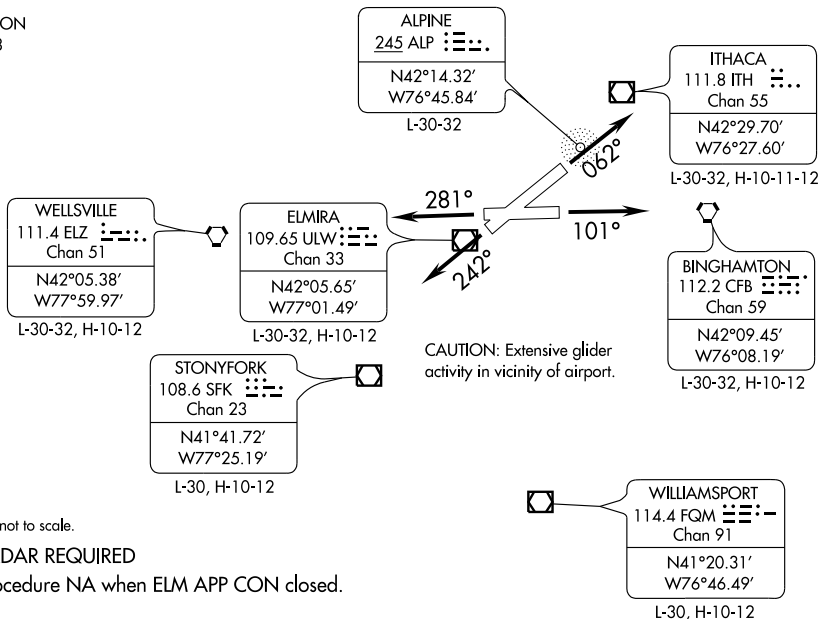


ATIS 125.475
CLNC DEL
121.9
GND CON
121.9
ELMIRA TOWER *
121.1 257.8
ELMIRA DEP CON
119.45 257.8

TAKE-OFF MINIMUMS:

Rwy 5, 23, NA - ATC.
Rwy 6, 600-2¾ or STANDARD with minimum climb of 325' per NM to 1700.
Rwy 10, STANDARD with minimum climb of 449' per NM to 1600.
Rwy 24, STANDARD with minimum climb of 423' per NM to 2400.
Rwy 28, STANDARD with minimum climb of 636' per NM to 2100.



NOTE: Chart not to scale.
NOTE: RADAR REQUIRED
NOTE: Procedure NA when ELM APP CON closed.

TAKE-OFF OBSTACLES:

NOTE: Rwy 6: Multiple trees beginning 984' from DER, 228' left of centerline, up to 34' AGL/1023' MSL.
Multiple trees 2.1 NM from DER, 3938' left of centerline, up to 100' AGL/1499' MSL.
Multiple trees beginning 809' from DER, 102' right of centerline, up to 39' AGL/1028' MSL.
NOTE: Rwy 10: Poles and multiple trees beginning 551' from DER, 38' left of centerline, up to 49' AGL/998' MSL.
Pole and multiple trees beginning 130' from DER, 125' right of centerline, up to 63' AGL/1012' MSL.
NOTE: Rwy 24: Sign and Multiple Trees beginning 870' from DER, 528' left of centerline, up to 48' AGL/1006' MSL.
NOTE: Rwy 28: Multiple trees beginning 1341' from DER, 289' left of centerline, up to 73' AGL/1012' MSL.
Tower and multiple trees beginning 440' from DER, 472' right of centerline, up to 92' AGL/1031' MSL.



DEPARTURE ROUTE DESCRIPTION

- TAKE-OFF RUNWAY 06:** Climb heading 062° to 4000, thence. . . .
- TAKE-OFF RUNWAY 24:** Climb heading 242° to 4000, thence. . . .
- TAKE-OFF RUNWAY 10:** Climb heading 101° to 4000, thence. . . .
- TAKE-OFF RUNWAY 28:** Climb heading 281° to 4000, thence. . . .

. . . . Expect radar vectors to join assigned route/fix. Expect clearance to filed altitude 10 minutes after departure.

LOST COMMUNICATIONS: If radio contact is not established/lost within 2 minutes after departure, proceed on course and climb to 5000'. Ten minutes after departure, climb to filed altitude/flight level.

NE-2, 22 OCT 2009 to 19 NOV 2009

NE-2, 22 OCT 2009 to 19 NOV 2009