

ELKO, NEVADA

AL-129 (FAA)

LDA/DME RWY 23

ELKO RGNL (EKO)

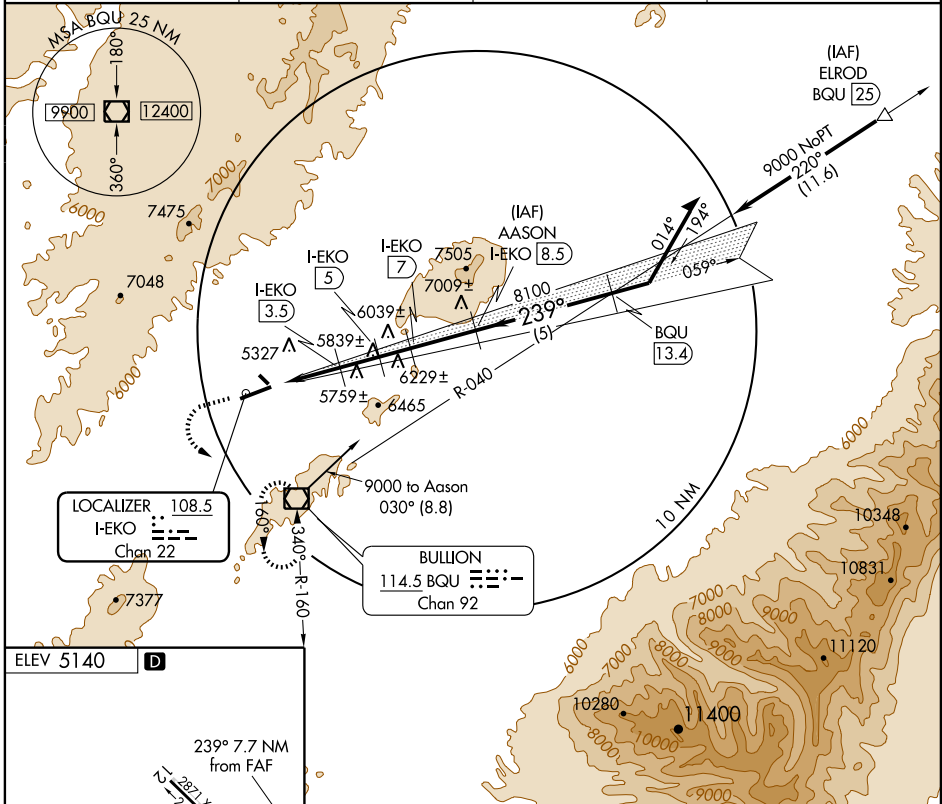
LOC/DME I-EKO 108.5 Chan 22	APP CRS 239°	Rwy Idg TDZE Apt Elev	6410 5064 5140
--	------------------------	-----------------------------	---

▼ Inoperative table does not apply to Cat. A and B.

▲ MALSR

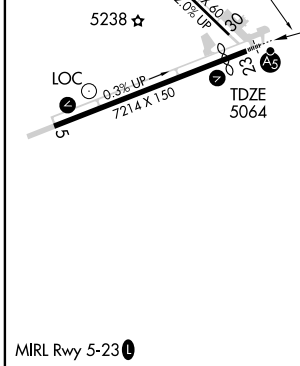
MISSED APPROACH: Climb to 6300 then climbing left turn to 10000 direct BQU VOR/DME and hold.

ASOS 119.275	SALT LAKE CENTER 132.25 338.35	UNICOM 123.0 (CTAF)	122.7
------------------------	--	-------------------------------	--------------



SW-4, 22 OCT 2009 to 19 NOV 2009

SW-4, 22 OCT 2009 to 19 NOV 2009



6300 10000 BQU Use I-EKO DME when on localizer course.

114.5

AAASON I-EKO (8.5) Remain within 10 NM

I-EKO (0.9) I-EKO (3.5) I-EKO (5) I-EKO (7)

3.66° TCH 50

059° 239° 9000

8100 VGSJ and descent angles not coincident.

0.1 2.6 NM 1.5 NM 2 NM 1.5 NM

CATEGORY	A	B	C	D
S-23	5660-1 596 (600-1)			5660-1¼ 596 (600-1¼)
CIRCLING	6020-1 880 (900-1)	6020-1¼ 880 (900-1¼)	6140-3 1000 (1000-3)	6220-3 1080 (1100-3)

ELKO, NEVADA
Amdt 5 08325

40°50'N-115°48'W

ELKO RGNL (EKO) LDA/DME RWY 23